



BUILDING CODE COMPLIANCE OFFICE (BCCO)  
PRODUCT CONTROL DIVISION

MIAMI-DADE COUNTY, FLORIDA  
METRO-DADE FLAGLER BUILDING  
140 WEST FLAGLER STREET, SUITE 1603  
MIAMI, FLORIDA 33130-1563  
(305) 375-2901 FAX (305) 375-2908  
www.buildingcodeonline.com

**NOTICE OF ACCEPTANCE (NOA)**

**T. M. Windows & Door, LLC**  
601 N. W. 12<sup>th</sup> Ave.,  
Pompano Beach, Fl. 33069

**SCOPE:**

This NOA is being issued under the applicable rules and regulations governing the use of construction materials. The documentation submitted has been reviewed by Miami-Dade County Product Control Division and accepted by the Board of Rules and Appeals (BORA) to be used in Miami Dade County and other areas where allowed by the Authority Having Jurisdiction (AHJ).

This NOA shall not be valid after the expiration date stated below. The Miami-Dade County Product Control Division (In Miami Dade County) and/or the AHJ (in areas other than Miami Dade County) reserve the right to have this product or material tested for quality assurance purposes. If this product or material fails to perform in the accepted manner, the manufacturer will incur the expense of such testing and the AHJ may immediately revoke, modify, or suspend the use of such product or material within their jurisdiction. BORA reserves the right to revoke this acceptance, if it is determined by Miami-Dade County Product Control Division that this product or material fails to meet the requirements of the applicable building code.

This product is approved as described herein, and has been designed to comply with the Florida Building Code, including High Velocity Hurricane Zone of the Florida Building Code.

**DESCRIPTION: Series "230 " Outswing Aluminum Door w / wo sidelites**

**APPROVAL DOCUMENT:** Drawing No. **W02-95.**, titled "230 Alum Outswing Door w/sidelites. ", sheets 1 through 6 of 6, prepared by Al-Farooq Corporation, dated 08-28-02 and last revised on 10-10-2006, signed and sealed by Dr. Humayoun Farooq, P. E., bearing the Miami-Dade County Product Control Renewal stamp with the Notice of Acceptance number and expiration date by the Miami-Dade County Product Control Division.

**MISSILE IMPACT RATING: Small Missile Impact Resistant**

**LABELING:** Each unit shall bear a permanent label with the manufacturer's name or logo, city, state and following statement: "Miami-Dade County Product Control Approved", unless otherwise noted herein.

**RENEWAL** of this NOA shall be considered after a renewal application has been filed and there has been no change in the applicable building code negatively affecting the performance of this product.

**TERMINATION** of this NOA will occur after the expiration date or if there has been a revision or change in the materials, use, and/or manufacture of the product or process. Misuse of this NOA as an endorsement of any product, for sales, advertising or any other purposes shall automatically terminate this NOA. Failure to comply with any section of this NOA shall be cause for termination and removal of NOA.

**ADVERTISEMENT:** The NOA number preceded by the words Miami-Dade County, Florida, and followed by the expiration date may be displayed in advertising literature. If any portion of the NOA is displayed, then it shall be done in its entirety.

**INSPECTION:** A copy of this entire NOA shall be provided to the user by the manufacturer or its distributors and shall be available for inspection at the job site at the request of the Building Official.

This NOA **renews # 06-0327.03** and consists of this page 1 & evidence page E-1, as well as approval document mentioned above.

The submitted documentation was reviewed by **Ishaq I. Chanda, P. E.**



NOA No 07-1010.21  
Expiration Date: December 26, 2012  
Approval Date: February 21, 2008  
Page 1

1/29/08

**T. M. Windows & Door, LLC**

**NOTICE OF ACCEPTANCE: EVIDENCE SUBMITTED**

- A. DRAWINGS** (Transferred from file # 06-0327.03)
1. Manufacturer's die drawings and sections.
  2. Drawing No. **W02-95.**, titled "230 Alum Outswing Door w/sidelites.", sheets 1 through 6 of 6, prepared by Al-Farooq Corporation, dated 08-28-02 and last revised on 10-10-2006, signed and sealed by Dr. Humayoun Farooq, P. E.
- B. TESTS** (Transferred from file # 06-0327.03)
1. Test report on 1) Air Infiltration Test, per FBC, TAS 202-94  
2) Uniform Static Air Pressure Test, Loading per TAS 202-94  
3) Water Resistance Test, per FBC, TAS 202-94  
4) Forced Entry Test per FBC, TAS 202-94  
along with marked-up drawings and installation diagram of aluminum outswing door, prepared by Fenestration Testing Laboratory, Inc., Test Report No. **FTL-3053**, dated 07/01/02, signed and sealed by Luis Antonion Figueredo, P.E.
  2. Test report on 1) Air Infiltration Test, per FBC, TAS 202-94  
2) Uniform Static Air Pressure Test, Loading per TAS 202-94  
3) Water Resistance Test, per FBC, TAS 202-94  
4) Forced Entry Test per FBC, TAS 202-94  
along with marked-up drawings and installation diagram of aluminum outswing door, prepared by Fenestration Testing Laboratory, Inc., Test Report No. **FTL-2648**, dated 06/26/00, signed and sealed by Aldo P. Gonzales, P.E.
- C. CALCULATIONS**(Transferred from file # 06-0327.03)
1. Anchor verification calculations dated 03-07-06, complying with FBC-2004, prepared by Al- Farooq Corp., signed and sealed by Dr. Humayoun Farooq, P.E.
  2. Structural performance, comparative analysis and anchor verification calculations dated 10-15-02, prepared by Al- Farooq Corporation, signed and sealed by Dr. Humayoun Farooq, P.E.(
  3. Glazing complies w/ ASTM E-1300-98 &-2002.
- D. MATERIAL CERTIFICATIONS**
1. Notice of Acceptance No. 06-0216.06 issued to Solutia Inc. for "Saflex III G interlayer", expiring on 03/04/09.
- E. STATEMENTS**
1. Letter of conformance and "No financial interest, dated 02-24-2006 signed & sealed by Dr. Humayoun Farooq, P.E.
  2. Statement letter of compliance, as part of above test report.
- F. OTHER**
1. This NOA **renews # 06-0327.03**, expiring December 26, 2007.

*Ishaq I. Chanda*

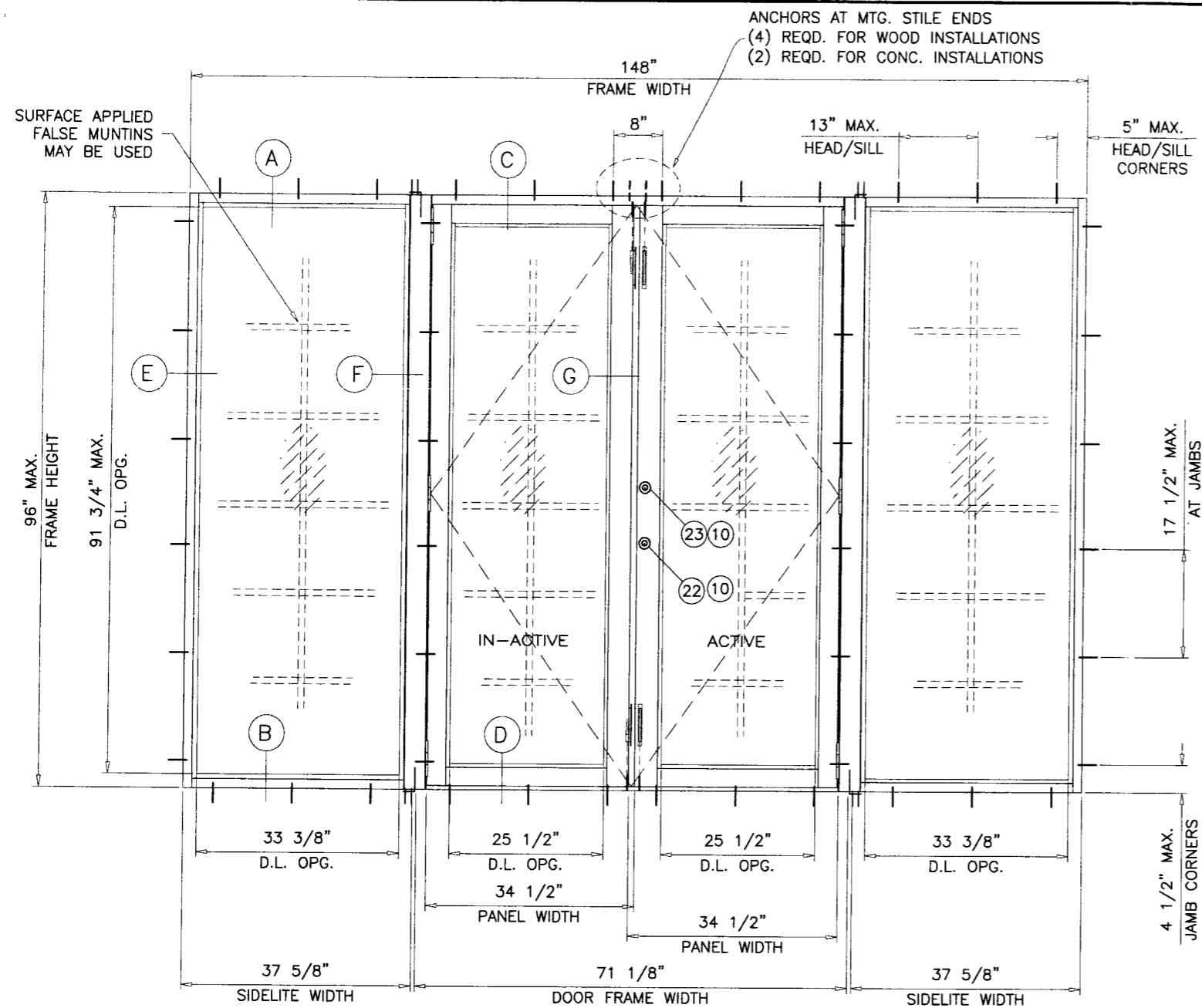
Ishaq I. Chanda, P. E.

Product Control Examiner

NOA No 07-1010.21

Expiration Date: December 26, 2012

Approval Date: February 21, 2008



( OXXO )

**SERIES-230 ALUM OUT-SWING DOOR W/ SIDELITES**

DOORS/SIDELITES GLAZED WITH LAMINATED GLASS RATED FOR SMALL MISSILE IMPACT.

MIAMI-DADE COUNTY APPROVED IMPACT RESISTANT SHUTTERS ARE REQUIRED FOR INSTALLATIONS UP TO 30 FT. OF GRADE. SHUTTERS NOT REQD. FOR INSTALLATIONS ABOVE 30 FT. OF GRADE.

THIS PRODUCT HAS BEEN DESIGNED AND TESTED TO COMPLY WITH THE REQUIREMENTS OF THE FLORIDA BUILDING CODE 2004 EDITION INCLUDING HIGH VELOCITY HURRICANE ZONE (HVHZ).

WOOD BUCKS BY OTHERS, MUST BE ANCHORED PROPERLY TO TRANSFER LOADS TO THE STRUCTURE.

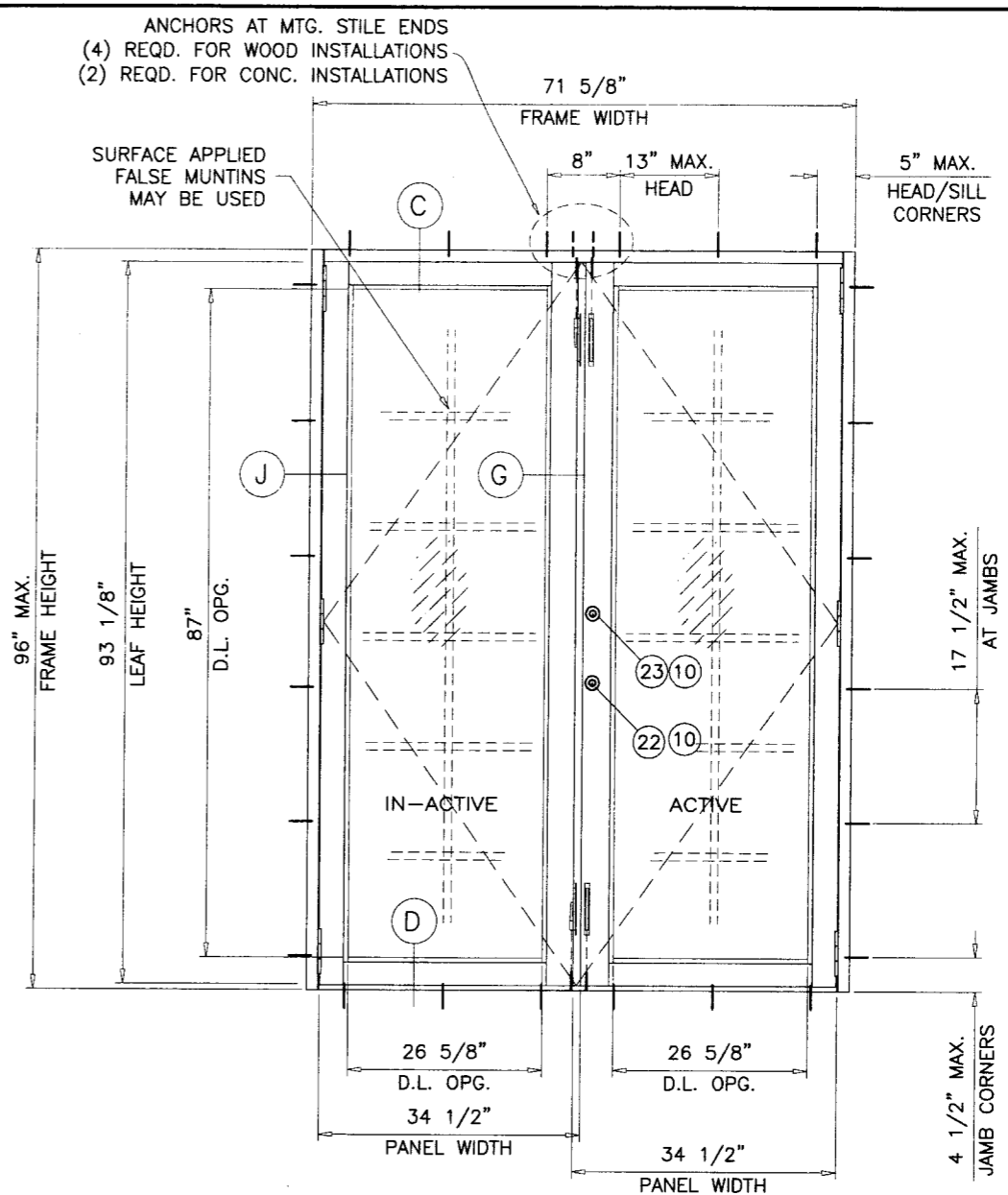
ANCHORS SHALL BE AS LISTED, SPACED AS SHOWN ON DETAILS, ANCHORS EMBEDMENT TO BASE MATERIAL SHALL BE BEYOND WALL DRESSING OR STUCCO.

ANCHORING OR LOADING CONDITIONS NOT SHOWN IN THESE DETAILS ARE NOT PART OF THIS APPROVAL.

A LOAD DURATION INCREASE IN ALLOWABLE STRESS IS USED IN DESIGN OF ANCHORS INTO WOOD ONLY.

MATERIALS INCLUDING BUT NOT LIMITED TO STEEL/METAL SCREWS, THAT COME INTO CONTACT WITH OTHER DISSIMILAR MATERIALS SHALL MEET THE REQUIREMENTS OF 2004 FLORIDA BLDG. CODE SECTION 2003.8.4.

TYPICAL ELEVATION  
TESTED UNITS



( XX )

PRODUCT RENEWED  
as complying with the Florida  
Building Code  
Acceptance No 07-1010-21  
Expiration Date DEC 26, 2012

By: Iskag I. Chanda  
Miami Dade Product Control  
Division

PRODUCT REVISED  
as complying with the Florida  
Building Code  
Acceptance No 06-0327-03  
Expiration Date DEC 26, 2007

By: Iskag I. Chanda  
Miami Dade Product Control  
Division

LAMINATED GLASS  
SMALL MISSILE IMPACT

Engr: DR. HUMAYOON FAROOQ  
STRUCTURES  
FLA. PE # 16557  
C.A.N. 3538

[Signature]  
OCT 10 2006

**afC**  
**AL-FAROOQ CORPORATION**  
ENGINEERS & PRODUCT DEVELOPMENT  
1235 S.W. 87 AVE  
MIAMI, FLORIDA 33174  
TEL. (305) 264-8100 FAX. (305) 262-6978  
COMP - ANL \ W02-95TMW

SERIES-230 ALUM OUT-SWING DOOR W/ SIDELITES (S.M.I.)  
**TM WINDOW AND DOOR**  
601 N.W. 12TH AVE.  
POMPANO BEACH, FL. 33069  
TEL. (954) 781-4430 FAX. (954) 781-5078

no	date	description	by
A	03.01.06	UPDATED FOR 2004 FBC	REV. PER BCCO COMMENTS
B	10.02.06		

revisions:

date: 10-11-02  
scale: 1/2"=1'-0"  
dr. by: HAMID  
chk. by:

drawing no.  
**W02-95**

sheet 1 of 7

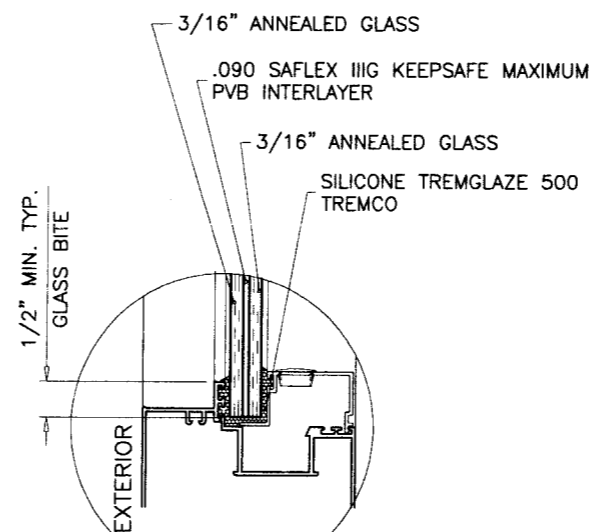
SIDELITE MULLION - DESIGN LOAD CAPACITY - PSF			
PANEL DIMENSIONS		GLASS TYPE 'A'	
WIDTH	HEIGHT	EXT. (+)	INT. (-)
3'-0"	7'-0"	65.0	65.0
3'-1 5/8"	7'-0"	65.0	65.0
3'-0"	8'-0"	65.0	65.0
3'-1 5/8"	8'-0"	60.6	60.6

GLASS CAPACITIES ON THESE CHARTS ARE BASED ON  
 A: ASTM E1300-98 (60 SEC. WIND)  
 B: ASTM E1300-02 (3 SEC. GUSTS) WITH REDUCTIONS FOR FLEXIBLE SUPPORTS TO COMPLY WITH SECTION 2403.2 OF FBC 2004 EDITION.

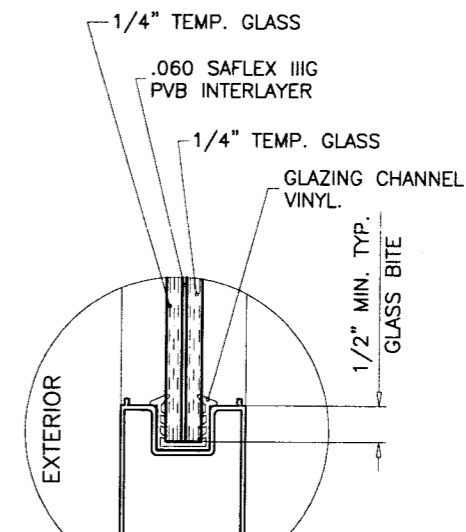
DOORS WITHOUT SIDELITE - DESIGN LOAD CAPACITY - PSF GLASS TYPE 'E'							
NOMINAL DOOR DIMENSIONS		NO REINFORCING		LIGHT REINFORCING		HEAVY REINFORCING	
X	XX	EXT. (+)	INT. (-)	EXT. (+)	INT. (-)	EXT. (+)	INT. (-)
3'-1 7/16" X 6'-8"	6'-0" X 6'-8"	60.0	60.0	65.0	65.0	80.0	90.0
3'-1 7/16" X 7'-0"	6'-0" X 7'-0"	60.0	60.0	65.0	65.0	80.0	90.0
3'-1 7/16" X 8'-0"	6'-0" X 8'-0"	60.0	60.0	65.0	65.0	80.0	90.0

DESIGN LOADS SHOWN ABOVE ARE FOR DOORS WITH ADD-ON SILL RISER (ITEM #29) OR HI-RISE SILL (ITEM #2A). OR FOR OPNGS. WHERE WATER INFILTRATION REQUIREMENTS ARE NOT APPLICABLE.  
 FOR DOORS WITH STANDARD SILL (ITEM #2) LIMIT EXT.(+) LOADS TO 53.3 PSF

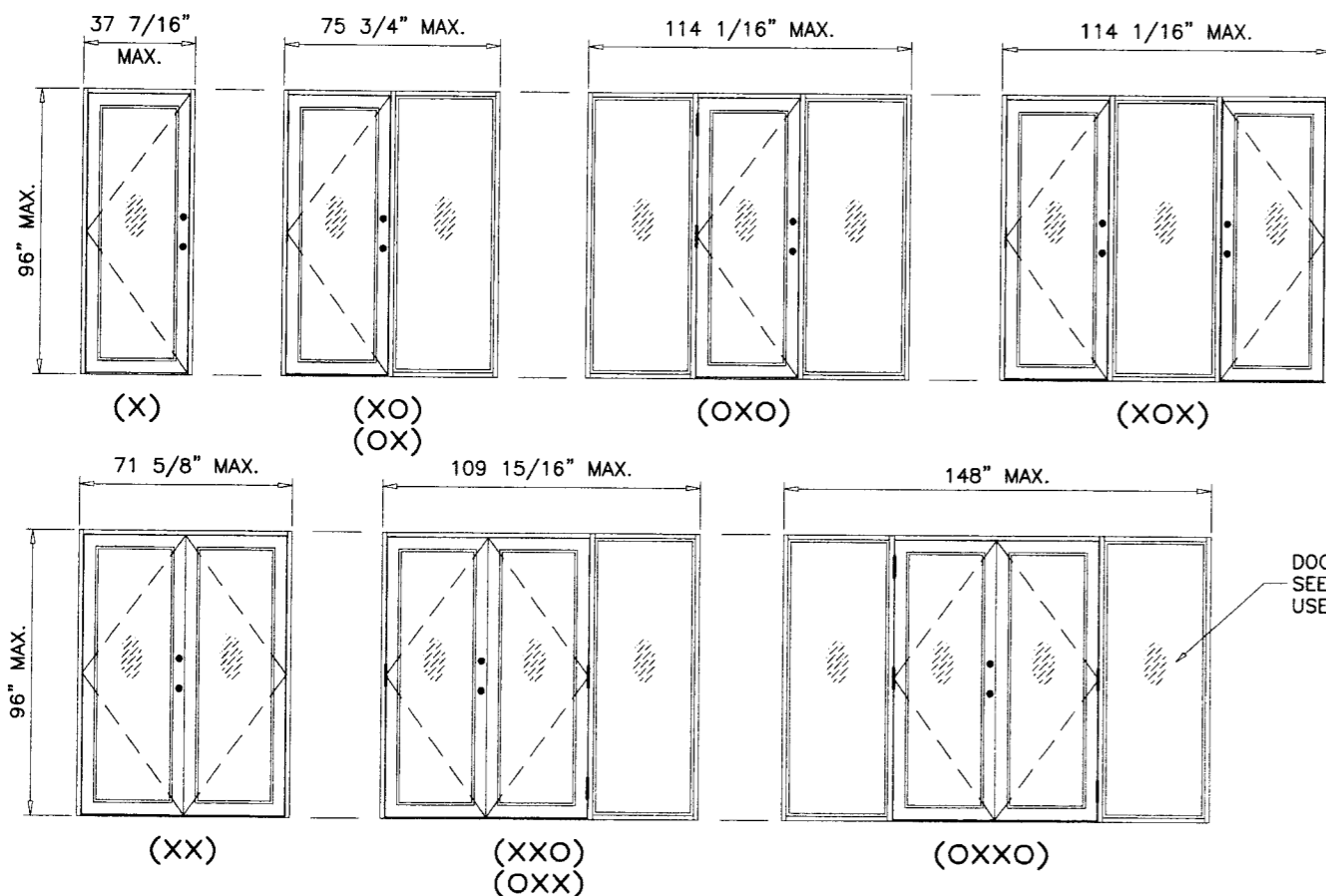
SEE SHEET 5 FOR REINFORCING DETAILS



0.460" OVERALL LAM. GLASS  
 GLASS TYPE 'A'  
 GLAZING DETAIL AT SIDELITE



0.510" OVERALL LAM. GLASS  
 GLASS TYPE 'E'  
 GLAZING DETAIL AT DOOR



DOORS WITH SIDELITES  
 SEE CHART ABOVE FOR SIDELITE MULLION CAPACITY  
 USE LOWER VALUE OF SIDELITE OR DOOR

APPROVED CONFIGURATIONS

PRODUCT RENEWED  
 as complying with the Florida  
 Building Code  
 Acceptance No 07-1010-21  
 Expiration Date DEC 26, 2012  
 By: Ishag I. Chande  
 Miami Dade Product Control  
 Division

PRODUCT REVISED  
 as complying with the Florida  
 Building Code  
 Acceptance No 06-0327-03  
 Expiration Date DEC 26, 2007  
 By: Ishag I. Chande  
 Miami Dade Product Control  
 Division

Engr: DR. HUMAYOON FAROOQ  
 STRUCTURES  
 FLA. PE # 16557  
 C.A.N. 3538  
 OCT 10 2006

**af c**  
**AL-FAROOQ CORPORATION**  
 ENGINEERS & PRODUCT DEVELOPMENT  
 1235 S.W. 87 AVE  
 MIAMI, FLORIDA 33174  
 TEL. (305) 264-8100 FAX. (305) 262-6978  
 COMP-ANL\W02-95TAW

---

SERIES-230 ALUM OUT-SWING DOOR W/ SIDELITES (S.M.I.)  
**TM WINDOW AND DOOR**  
 601 N.W. 12TH AVE.  
 POMPANO BEACH, FL. 33069  
 TEL. (954) 781-4430 FAX. (954) 781-5078

---

no	date	description
A	03.01.06	NOTES ADDED
B	10.02.06	REV. PER BCCO COMMENTS

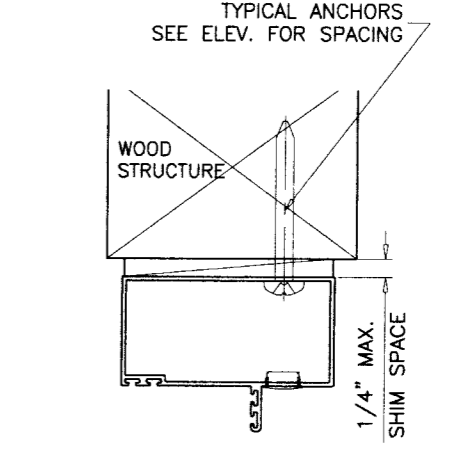
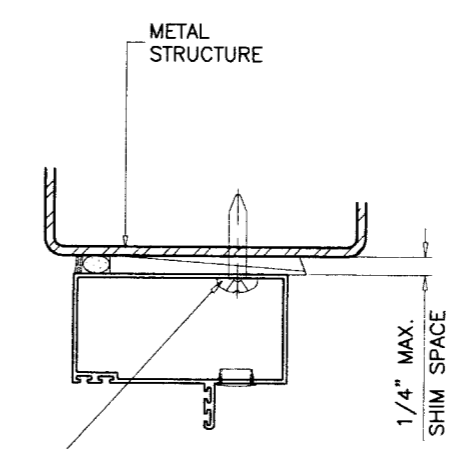
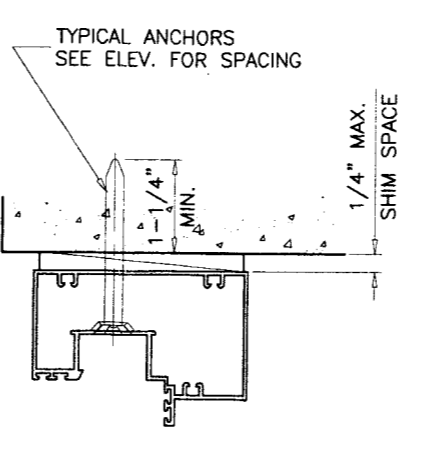
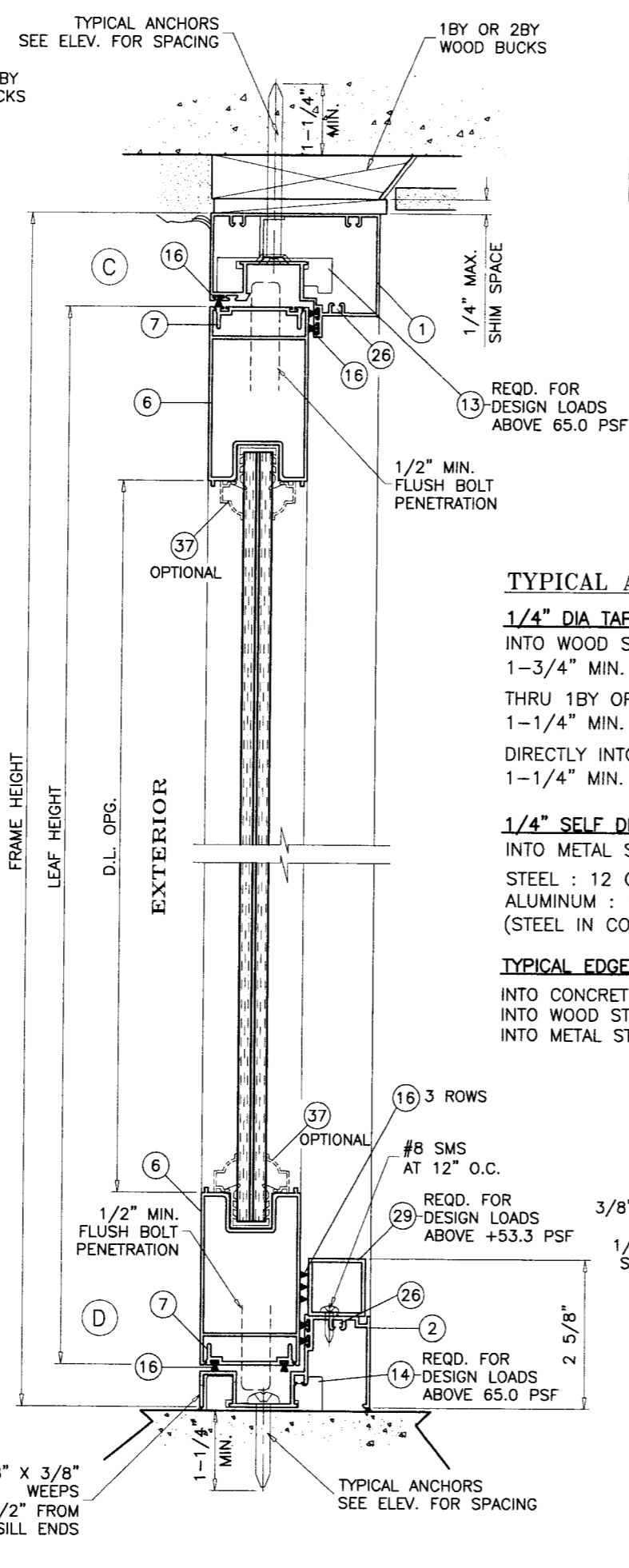
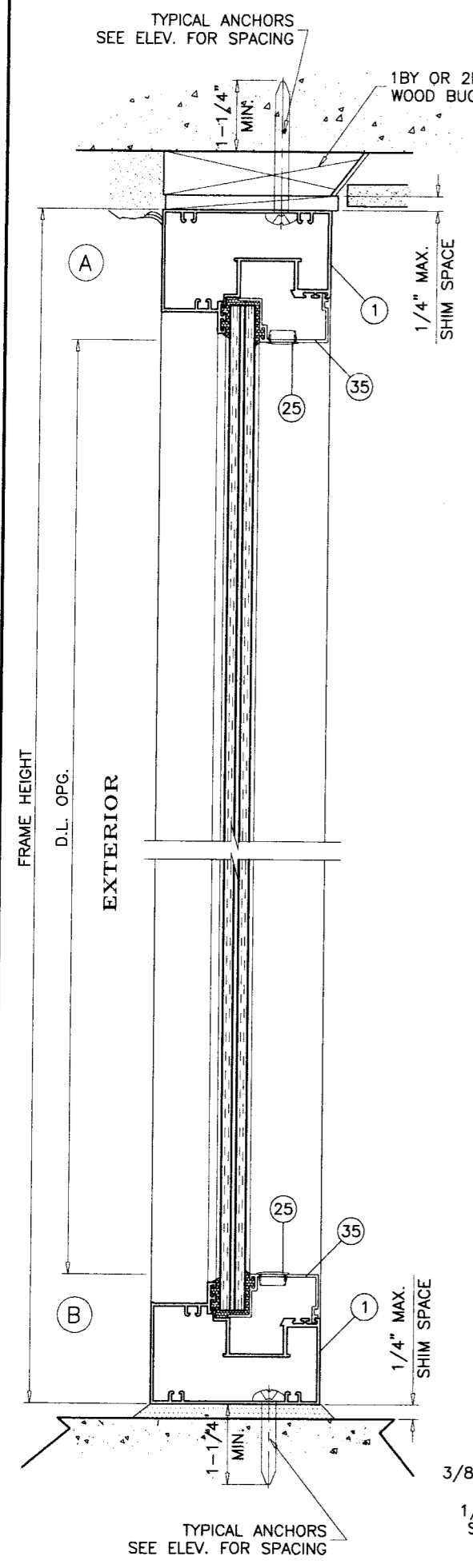
---

revisions:

date:	10-11-02
scale:	3/8" = 1"
dr. by:	HAMID
chk. by:	

---

drawing no.  
**W02-95**  
 sheet 2 of 7



WOOD BUCKS AND METAL STRUCTURES NOT BY TM WINDOWS MUST SUPPORT LOADS IMPOSED BY GLAZING SYSTEM AND TRANSFER THEM TO THE BUILDING STRUCTURE.

**TYPICAL ANCHORS:** SEE ELEV. FOR SPACING

- 1/4" DIA TAPCONS BY ELCO**  
 INTO WOOD STRUCTURE  
 1-3/4" MIN. PENETRATION INTO WOOD  
 THRU 1BY OR 2BY WOOD BUCKS INTO MASONRY OR CONC.  
 1-1/4" MIN. EMBED INTO MASONRY OR CONC.  
 DIRECTLY INTO CONCRETE OR MASONRY  
 1-1/4" MIN. EMBED INTO CONCRETE OR MASONRY

- 1/4" SELF DRILLING SCREWS (GRADE 5 CRS)**  
 INTO METAL STRUCTURES  
 STEEL : 12 GA. MIN. (Fy = 36 KSI MIN.)  
 ALUMINUM : 1/8" THK. MIN. (6063-T5 MIN.)  
 (STEEL IN CONTACT WITH ALUMINUM TO BE PLATED OR PAINTED)

- TYPICAL EDGE DISTANCE**  
 INTO CONCRETE AND MASONRY = 2-1/2" MIN.  
 INTO WOOD STRUCTURE = 1" MIN.  
 INTO METAL STRUCTURE = 3/4" MIN.

**SEALANTS:**

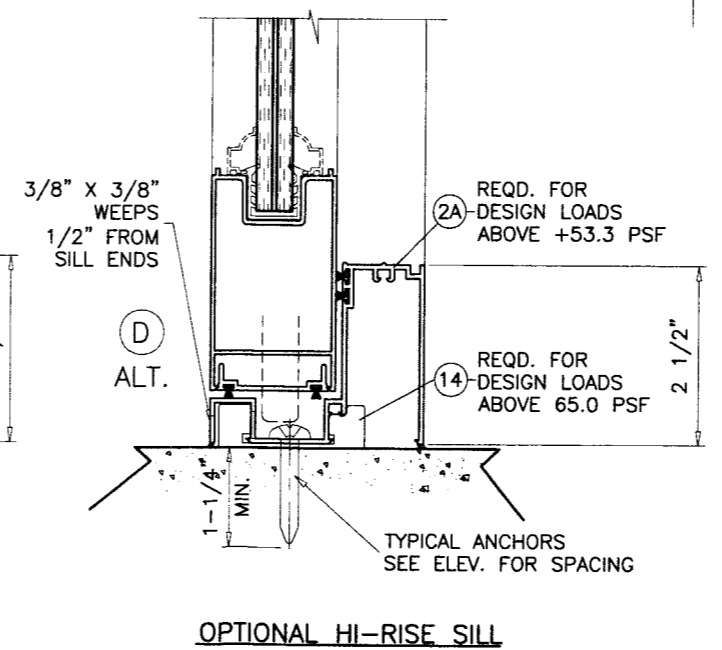
FRAME CORNERS AND GLAZING BEAD TO PANEL SEALED WITH WHITE COLORED SEALANT.  
 SEAMS BETWEEN MULLION AND JAMBS SEALED WITH SILICONE.

**HINGES:**

7-5/8" LONG ALUM BUTT HINGES, AT 11" FROM EACH END AND ONE AT MIDSPAN OF LEAF.

**LOCKS:**

STANDARD STEEL THROW BOLT LOCK, KEY OPERATED ON EXTERIOR AND THUMB TURN ON INTERIOR AT EACH ACTIVE LEAF LOCK STILE, 48" FROM BOTTOM  
 CONVENTIONAL LOCKSET WITH KNOB, KEY OPERATED ON EXTERIOR AND THUMB TURN ON INTERIOR AT EACH ACTIVE LEAF LOCK STILE, 39-1/2" FROM BOTTOM  
 MANUALLY OPERATED CONCEALED FLUSH BOLTS AT TOP & BOTTOM OF EACH LEAF LOCK STILE (4) AT DOUBLE(XX) DOORS, (2) AT SINGLE(X) DOORS  
 (FLUSH BOLTS AT TOP & BOTTOM OF ACTIVE AND INACTIVE LEAFS TO BE ENGAGED DURING PERIODS OF HURRICANE WARNING)



**PRODUCT RENEWED**  
 as complying with the Florida Building Code  
 Acceptance No 07-1010-21  
 Expiration Date DEC 26, 2012  
 By Ishag I. Chanda  
 Miami Dade Product Control Division

**PRODUCT REVISED**  
 as complying with the Florida Building Code  
 Acceptance No 06-0327-03  
 Expiration Date DEC 26, 2007  
 By Ishag I. Chanda  
 Miami Dade Product Control Division

Engr: DR. HUMAYOUN FAROOQ  
 STRUCTURES  
 FLA. PE # 16557  
 C.A.N. 3538  
 OCT 10 2006

**AL-FAROOQ CORPORATION**  
 ENGINEERS & PRODUCT DEVELOPMENT  
 12335 S.W. 87 AVE  
 MIAMI, FLORIDA 33174  
 TEL. (305) 264-8100 FAX. (305) 262-6978  
 COMP-ANL\W02-95TMW

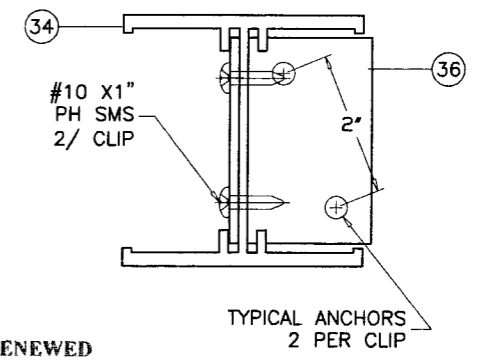
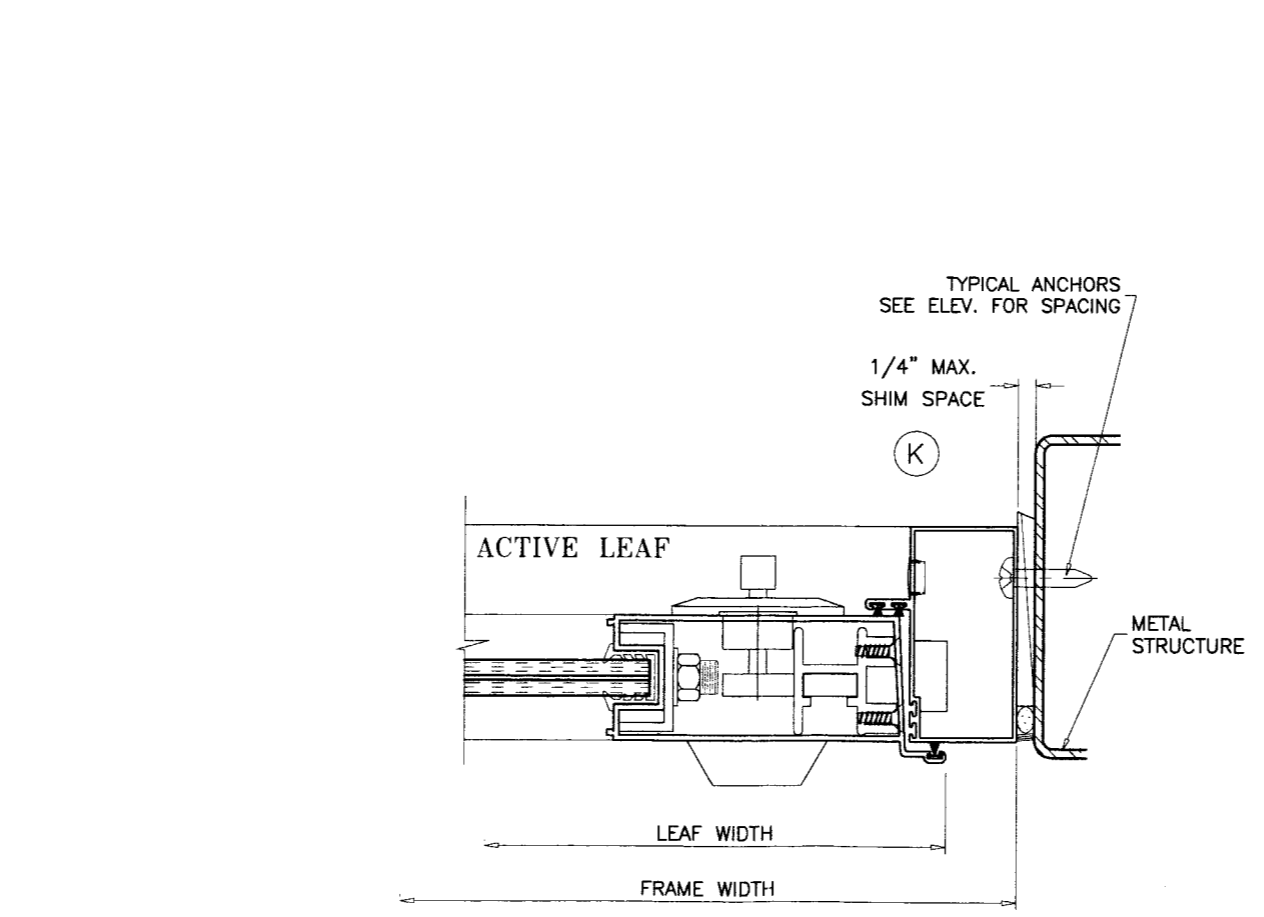
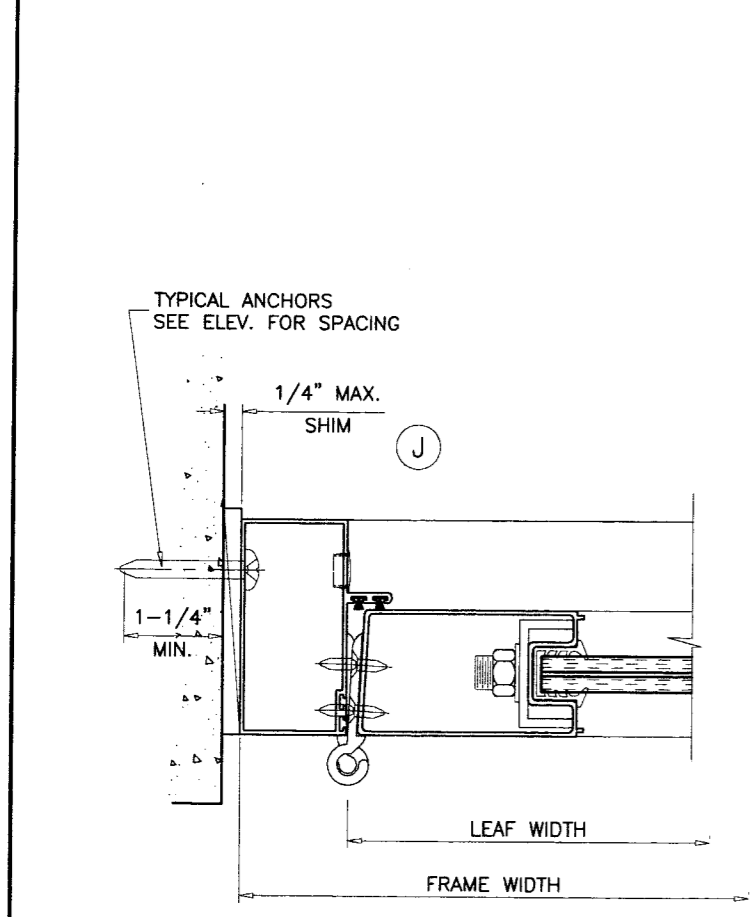
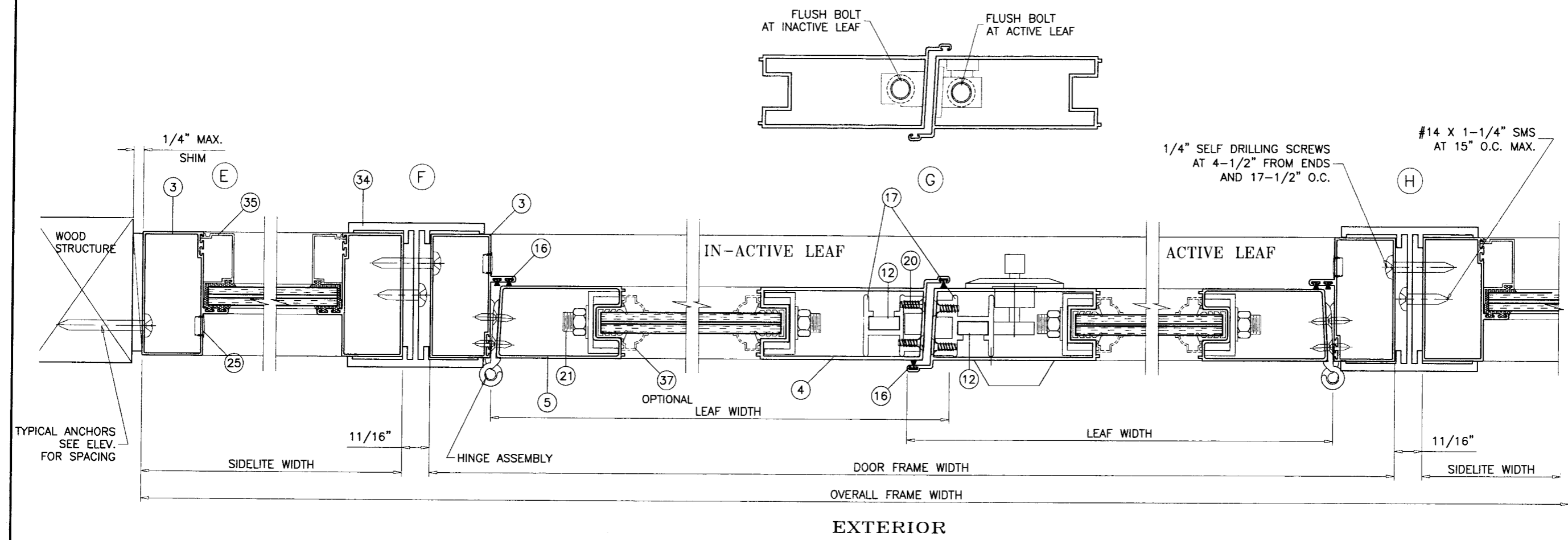
SERIES-230 ALUM OUT-SWING DOOR W/ SIDELITES (S.M.I.)  
**TM WINDOW AND DOOR**  
 601 N.W. 12TH AVE.  
 POMPANO BEACH, FL. 33069  
 TEL. (954) 781-4430 FAX. (954) 781-5078

no	date	description
A	03.01.06	ANCHORS REV.
B	10.02.06	REV. PER BCCO COMMENTS

revisions:

date: 10-11-02  
 scale: 3/8" = 1"  
 dr. by: HAMID  
 chk. by:

drawing no. **W02-95**  
 sheet 3 of 7



**PRODUCT RENEWED**  
 as complying with the Florida  
 Building Code  
 Acceptance No. 07-1010.21  
 Expiration Date DEC 26, 2012  
 By Ishag I. Chanda  
 Miami Dade Product Control  
 Division

**PRODUCT REVISED**  
 as complying with the Florida  
 Building Code  
 Acceptance No. 06-0327.03  
 Expiration Date DEC 26, 2007  
 By Ishag I. Chanda  
 Miami Dade Product Control  
 Division

Engr: DR. HUMAYOON FAROOQ  
 STRUCTURES  
 FLA. PE # 16557  
 C.A.N. 3538

*[Signature]*  
 OCT 10 2006

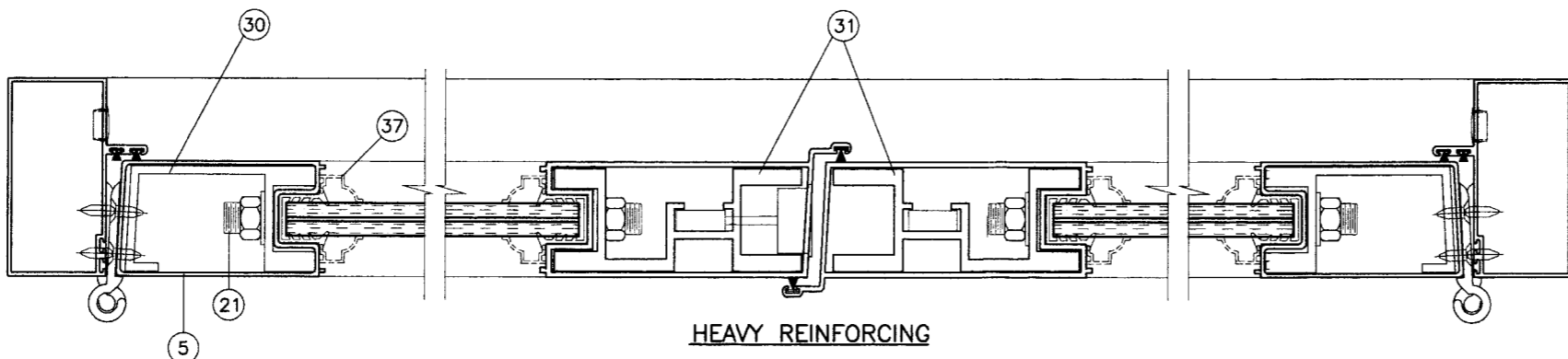
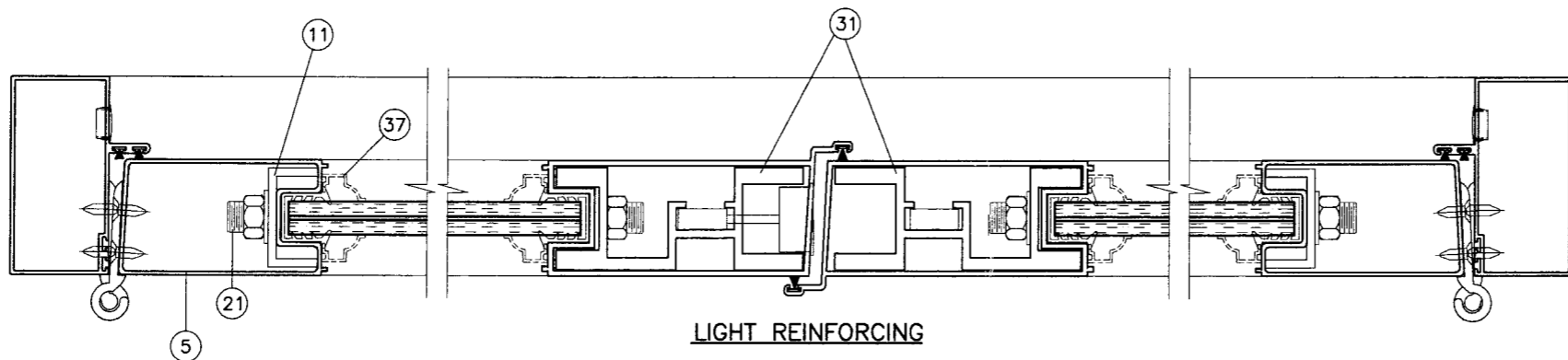
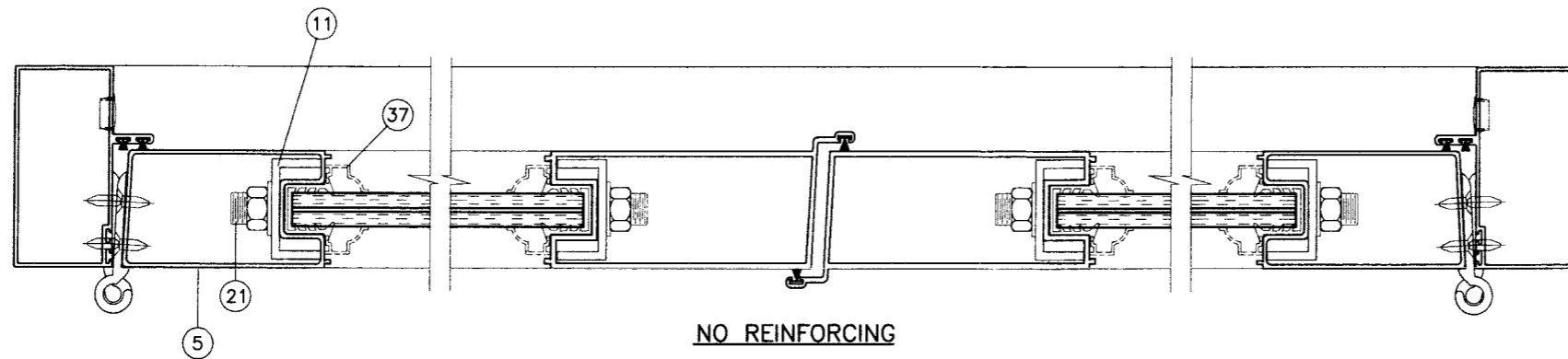
revisions:	
no	date by description
A	03.01.06 DTL.S. REV.
B	10.02.06 REV. PER BCCO COMMENTS

date: 10-11-02	scale: 3/8" = 1"
dr. by: HAMID	chk. by:

drawing no.	W02-95
sheet 4 of 7	



**PRODUCT RENEWED**  
 as complying with the Florida  
 Building Code  
 Acceptance No. 07-1010-21  
 Expiration Date DEC 26, 2012  
 By Isaac I. Chandra  
 Miami Dade Product Control  
 Division

**PRODUCT REVISED**  
 as complying with the Florida  
 Building Code  
 Acceptance No. 06-0327-03  
 Expiration Date DEC 26, 2007  
 By Isaac I. Chandra  
 Miami Dade Product Control  
 Division

Engr: DR. HUMAYOUN FAROOQ  
 STRUCTURES  
 FLA. PE # 16557  
 C.A.N. 3538

[Signature]  
 OCT 10 2006

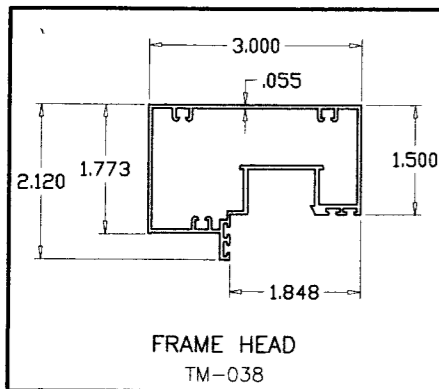
**af c**  
**AL-FAROOQ CORPORATION**  
 ENGINEERS & PRODUCT DEVELOPMENT  
 1235 S.W. 87 AVE  
 MIAMI, FLORIDA 33174  
 TEL. (305) 264-8100 FAX. (305) 262-6978  
 COMP-ANL\W02-95TMW

SERIES-230 ALUM OUT-SWING DOOR W/ SIDELITES (S.M.I.)  
**TM WINDOW AND DOOR**  
 601 N.W. 12TH AVE.  
 POMPAHO BEACH, FL. 33069  
 TEL. (954) 781-4430 FAX. (954) 781-5078

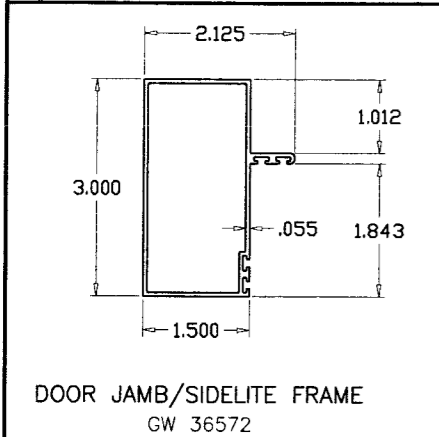
no	date	by	description	REV. PER	BCCO COMMENTS
B	10.02.06				

date: 10-11-02  
 scale: 3/8" = 1"  
 dr. by: HAMID  
 chk. by:

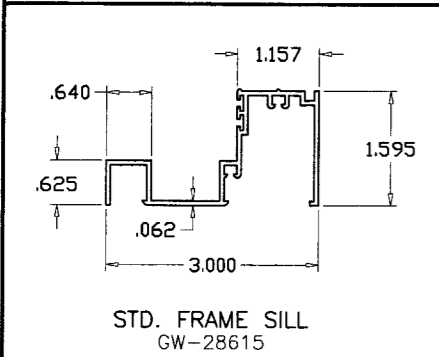
drawing no.  
**W02-95**  
 sheet 5 of 7



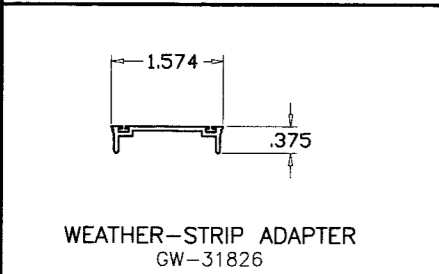
FRAME HEAD  
TM-038



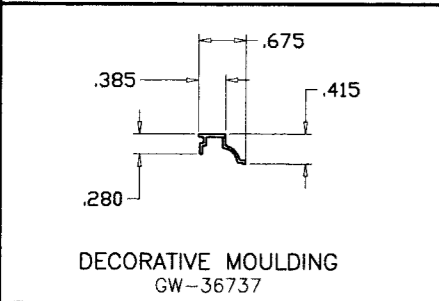
DOOR JAMB/SIDELITE FRAME  
GW 36572



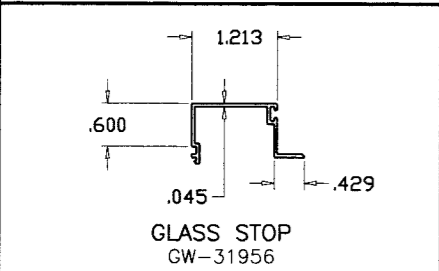
STD. FRAME SILL  
GW-28615



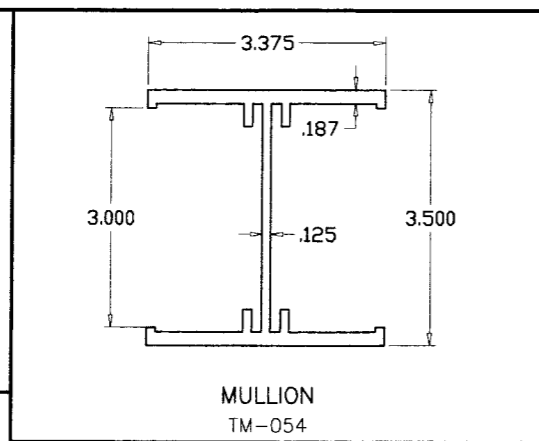
WEATHER-STRIP ADAPTER  
GW-31826



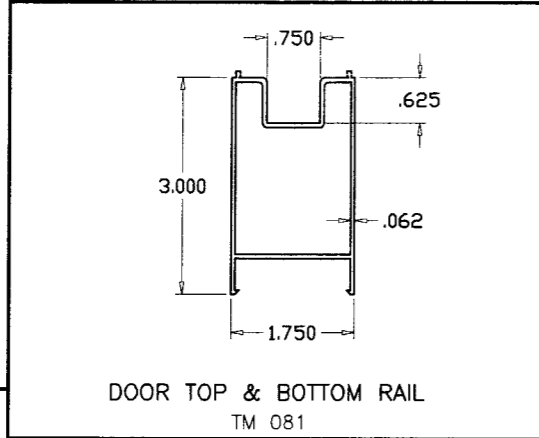
DECORATIVE MOULDING  
GW-36737



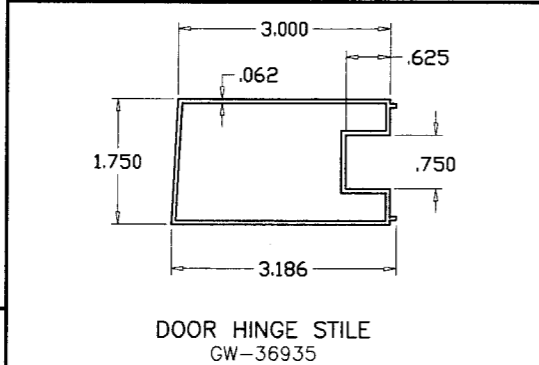
GLASS STOP  
GW-31956



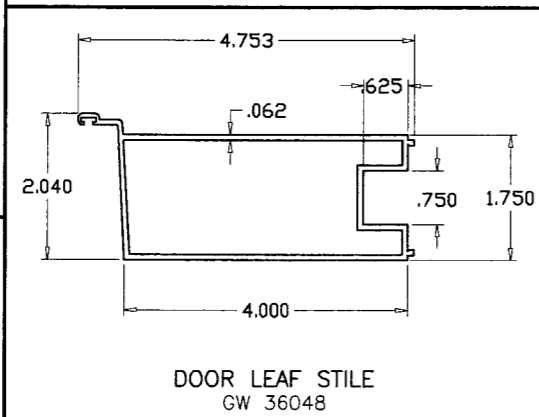
MULLION  
TM-054



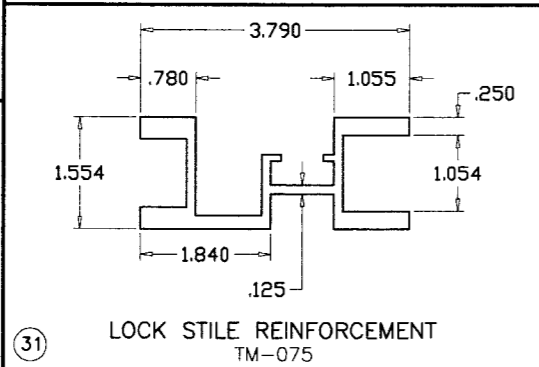
DOOR TOP & BOTTOM RAIL  
TM 081



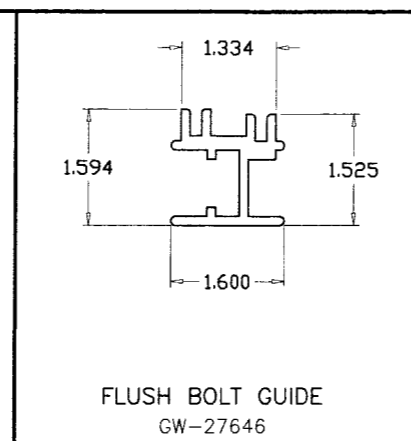
DOOR HINGE STILE  
GW-36935



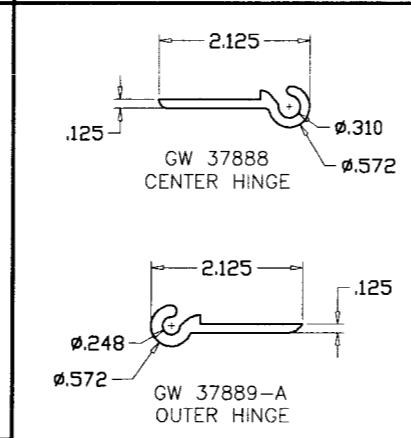
DOOR LEAF STILE  
GW 36048



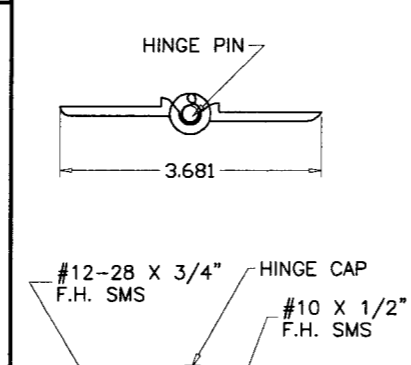
LOCK STILE REINFORCEMENT  
TM-075



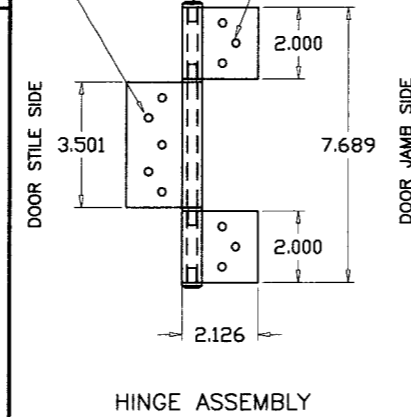
FLUSH BOLT GUIDE  
GW-27646



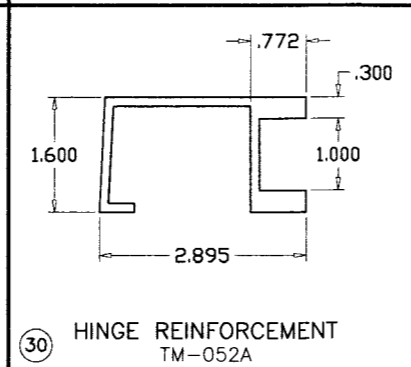
GW 37888  
CENTER HINGE



GW 37889-A  
OUTER HINGE



HINGE ASSEMBLY



HINGE REINFORCEMENT  
TM-052A

ITEM #	PART #	QUANTITY	DESCRIPTION	MATERIAL	MANF./SUPPLIER/REMARKS
1	TM-038	1	FRAME HEAD	6063-T6	-
2	GW 28615	1	FRAME SILL	6063-T6	-
2A	GW 37319	1	ALT. FRAME SILL	6063-T6	-
3	GW 36572	2	FRAME JAMB	6063-T6	-
4	GW 36048	1	PANEL LOCK STILE	6063-T5	-
5	GW 36935	1	PANEL HINGE STILE	6063-T5	-
6	TM-081	2	PANEL TOP/BOTTOM RAIL	6063-T5	-
7	GW 31826	4	WEATHERSTRIP ADAPTER	6063-T5	END OF DOOR STILES (TOP/BOTTOM)
8	GW 37889A	2/HINGE ASSY.	TM OUTER BUTT HINGE	6063-T6	DOOR PANEL/FRAME HINGE SIDE
9	GW 33888	1/HINGE ASSY.	TM CENTER BUTT HINGE	6063-T6	DOOR PANEL/FRAME HINGE SIDE
10	GW 32222	2	DOOR LOCK INSERT	6063-T5	LOCK STILE
11	-	2/ LEAF	3/4 x 1 1/4 x 3/4 x 1/8" THK. CAP	ALUMINUM	3" LONG
12	-	2/LEAF	TM FLUSH BOLT ASSEMBLY	ALUMINUM	DOOR LOCK STILES
13	GW37056	AS REQD.	HEAD REINFORCING BAR, 12" LONG	6063-T5	AT MID SPAN
14	GW37056	AS REQD.	SILL REINFORCING BAR, 12" LONG	6063-T5	AT MID SPAN
16	4037	AS REQ'D.	"ULTRAFAB" CENTERFIN WOOLPILE	WOOL	LOCK STILES, JAMBS, HEAD, SILL
17	GW 27646	2/LEAF	FLUSHBOLT GUIDE, 2" LONG	6063-T5	LOCK STILES ENDS (TOP/BOTTOM)
18	-	1/HINGE	7/32" HINGE PIN	STEEL	AT EACH HINGE ASSEMBLY
20	-	AS REQD.	#10 x 1/2" F.H. UNDERCUT SMS.	STEEL	AT FLUSH BOLTS
21	-	2/LEAF	1/2" THREADED ROD, WASHER & NUT	STEEL	TOP/BOTTOM END RAILS
22	SERIES 400	1	KWIKSET KNOBLOCK	-	ACTIVE LEAF
23	SERIES 600	1	KWIKSET DEADBOLT	-	ACTIVE LEAF
24	-	2/HINGE ASSY.	HINGE BUSHING	PLASTIC	HINGE ASSEMBLY
25	-	36	DUST PLUG (OPTIONAL)	PLASTIC	DOOR JAMB INSTALL. SCREW HOLES
26	-	AS REQD.	#10 x 1" P.H. SMS. (ASSY. SCREW)	STEEL	DOOR FRAME MEMBERS/MULL CLIPS
27	-	2/HINGE ASSY.	HINGE CAP	PLASTIC	HINGE ASSEMBLY
29	-	1	SILL ADAPTER (1" X 1" X 1/16" TUBE)	ALUM	-
30	TM-052A	-	HINGE REINFORCEMENT	6105-T6	92-1/2" LONG
31	TM-075	1	LOCK STILE REINFORCEMENT	6063-T5	FULL LENGTH @ DOOR LOCK STILES
34	TM-054	2	MULLION	6063-T5	BETWEEN DOOR/SIDE LITE JAMBS
35	GW 31956	4	GLASS STOP	6063-T5	SIDE LITE GLAZING PERIMETER
36	-	2/MULL	2"x 4"x 2 7/8"x 1/8" CLIP	ALUM.	TOP & BOTTOM OF MULL
37	GW 36737	OPTIONAL	O.G. DECORATIVE MOULDING	6063-T5	DOOR PANEL PERIMETER

**PRODUCT RENEWED**  
as complying with the Florida  
Building Code  
Acceptance No. 02-1010-21  
Expiration Date DEC 26, 2012

By Ishag I. Chaudhry  
Miami Code Product Control  
Division

**PRODUCT REVISED**  
as complying with the Florida  
Building Code  
Acceptance No. 06-0327-03  
Expiration Date DEC 26, 2007

By Ishag I. Chaudhry  
Miami Code Product Control  
Division

HEAD

ALT. FRAME SILL  
GW-37319

SILL

SILL ADAPTER

Engr. DR. HUMAYOUN FAROOQ  
STRUCTURES  
FLA. PE # 16557  
C.A.N. 3538

OCT 10 2006

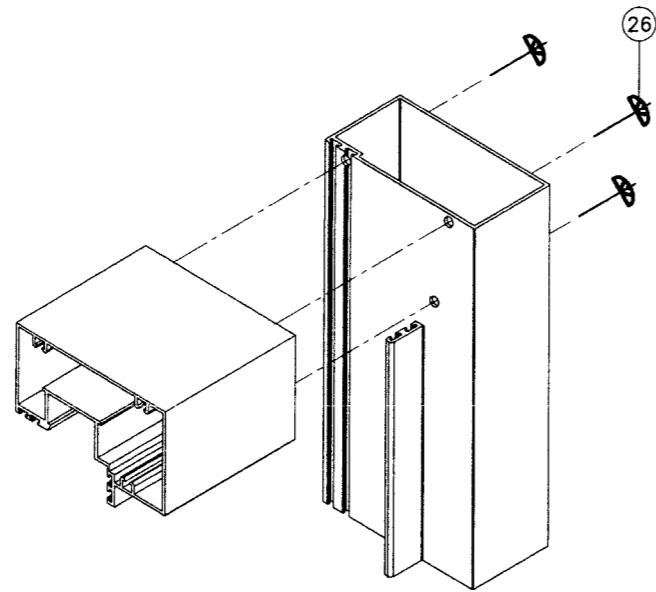
**AL-FAROOQ CORPORATION**  
ENGINEERS & PRODUCT DEVELOPMENT  
1235 S.W. 87 AVE  
MIAMI, FLORIDA 33174  
TEL. (305) 264-8100 FAX. (305) 262-6978  
COMP-ANL\W02-95TMW

SERIES-230 ALUM OUT-SWING DOOR W/ SIDELITES (S.M.I.)  
**TM WINDOW AND DOOR**  
601 N.W. 12TH AVE.  
POMPANO BEACH, FL. 33069  
TEL. (954) 781-4430 FAX. (954) 781-5078

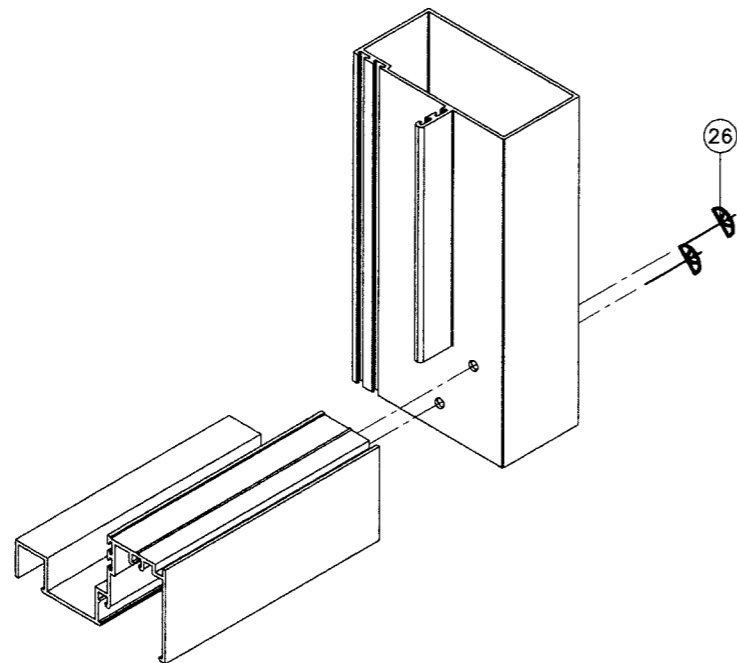
no	date	description
A	03.01.06	ALLOY REV.
B	10.02.06	REV. PER BCCO COMMENTS

date: 10-11-02  
scale: 3/8" = 1"  
dr. by: HAMID  
chk. by:

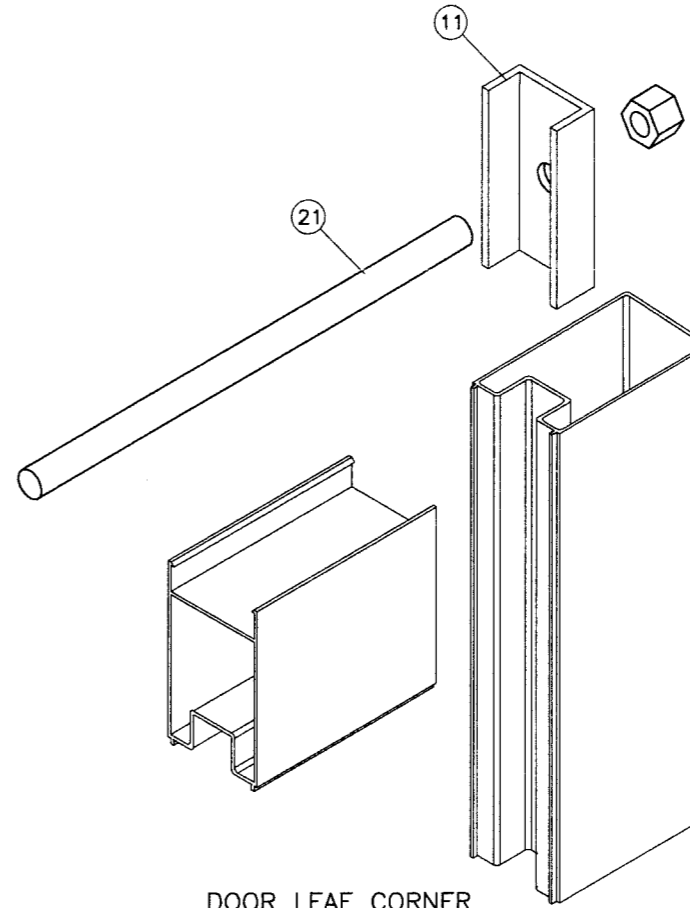
drawing no. **W02-95**  
sheet 6 of 7



FRAME TOP CORNER  
SIDELITE CORNER



FRAME BOTTOM CORNER



DOOR LEAF CORNER

**PRODUCT RENEWED**  
as complying with the Florida  
Building Code  
Acceptance No 07-1010.21  
Expiration Date DEC 26, 2012  
By Isaac J. Chanda  
Miami Dade Product Control  
Division

**PRODUCT REVISED**  
as complying with the Florida  
Building Code  
Acceptance No 06-0327-03  
Expiration Date Dec 26, 2007  
By Isaac J. Chanda  
Miami Dade Product Control  
Division

Engr: DR. HUMAYOUN FAROOQ  
STRUCTURES  
FLA. PE # 16557  
C.A.N. 3538

OCT 10 2006

**afc**  
**AL-FAROOQ CORPORATION**  
ENGINEERS & PRODUCT DEVELOPMENT  
1235 S.W. 87 AVE  
MIAMI, FLORIDA 33174  
TEL. (305) 264-8100 FAX. (305) 262-6978  
COMP-ANL\W02-95TMW

SERIES-230 ALUM OUT-SWING DOOR W/ SIDELITES (S.M.I.)  
**TM WINDOW AND DOOR**  
601 N.W. 12TH AVE.  
POMPANO BEACH, FL. 33069  
TEL. (954) 781-4430 FAX. (954) 781-5078

revisions:	no	date	by	description
	A	03.01.06		NO CHANGE THIS SHEET
	B	10.02.06		REV. PER BCCO COMMENTS

date: 10-11-02  
scale: 3/8" = 1"  
dr. by: HAMID  
chk. by:

drawing no.  
**W02-95**  
sheet 7 of 7