



**BUILDING CODE COMPLIANCE OFFICE (BCCO)
PRODUCT CONTROL DIVISION**

**MIAMI-DADE COUNTY, FLORIDA
METRO-DADE FLAGLER BUILDING
140 WEST FLAGLER STREET, SUITE 1603
MIAMI, FLORIDA 33130-1563
(305) 375-2901 FAX (305) 375-2908
www.buildingcodeonline.com**

NOTICE OF ACCEPTANCE (NOA)

**T.M. Window & Door Co.
601 N.W. 12th Ave.
Pompano Beach, FL 33069**

SCOPE:

This NOA is being issued under the applicable rules and regulations governing the use of construction materials. The documentation submitted has been reviewed by Miami-Dade County Product Control Division and accepted by the Board of Rules and Appeals (BORA) to be used in Miami Dade County and other areas where allowed by the Authority Having Jurisdiction (AHJ).

This NOA shall not be valid after the expiration date stated below. The Miami-Dade County Product Control Division (In Miami Dade County) and/or the AHJ (in areas other than Miami Dade County) reserve the right to have this product or material tested for quality assurance purposes. If this product or material fails to perform in the accepted manner, the manufacturer will incur the expense of such testing and the AHJ may immediately revoke, modify, or suspend the use of such product or material within their jurisdiction. BORA reserves the right to revoke this acceptance, if it is determined by Miami-Dade County Product Control Division that this product or material fails to meet the requirements of the applicable building code.

This product is approved as described herein, and has been designed to comply with the Florida Building Code, including the High Velocity Hurricane Zone.

DESCRIPTION: Series "350" Aluminum Sliding Glass Door (Reinforced) – N.I.

APPROVAL DOCUMENT: Drawing No. **W02-115**, titled "Series-350 Aluminum Sliding Glass Door (NI)", sheets 1 through 7 of 7, prepared by Al Farooq Corporation, dated 12/02/02 with last revision on March 16, 2007, signed and sealed by Dr. Humayoun Farooq, P.E., bearing the Miami-Dade County Product Control Revision stamp with the Notice of Acceptance number and expiration date by the Miami-Dade County Product Control Division.

MISSILE IMPACT RATING: None

LABELING: Each unit shall bear a permanent label with the manufacturer's name or logo, city, state and following statement: "Miami-Dade County Product Control Approved", unless otherwise noted herein.

RENEWAL of this NOA shall be considered after a renewal application has been filed and there has been no change in the applicable building code negatively affecting the performance of this product.

TERMINATION of this NOA will occur after the expiration date or if there has been a revision or change in the materials, use, and/or manufacture of the product or process. Misuse of this NOA as an endorsement of any product, for sales, advertising or any other purposes shall automatically terminate this NOA. Failure to comply with any section of this NOA shall be cause for termination and removal of NOA.

ADVERTISEMENT: The NOA number preceded by the words Miami-Dade County, Florida, and followed by the expiration date may be displayed in advertising literature. If any portion of the NOA is displayed, then it shall be done in its entirety.

INSPECTION: A copy of this entire NOA shall be provided to the user by the manufacturer or its distributors and shall be available for inspection at the job site at the request of the Building Official.

This NOA **renews and revises** NOA # **01-1129.04** and consists of this page 1 and evidence pages E-1 and E-2, as well as approval document mentioned above.

The submitted documentation was reviewed by **Jaime D. Gascon, P.E.**



*J. Gascon
4/5/07*

**NOA No 06-1016.01
Expiration Date: January 23, 2013
Approval Date: April 26, 2007
Page 1**

T.M. Window & Door Co.

NOTICE OF ACCEPTANCE: EVIDENCE SUBMITTED

A. DRAWINGS

1. Manufacturer's die drawings and sections.
2. Drawing No. **W02-115**, titled "Series-350 Aluminum Sliding Glass Door (NI)", sheets 1 through 7 of 7, prepared by Al Farooq Corporation, dated 12/02/02 last revised on March 16, 2007, signed and sealed by Dr. Humayoun Farooq, P.E

B. TEST

1. Test reports on 1) Air Infiltration Test, per FBC, TAS 202-94
2) Uniform Static Air Pressure Test, Loading per FBC TAS 202-94
3) Water Resistance Test, per FBC, TAS 202-94
4) Large Missile Impact Test per FBC, TAS 201-94
5) Cyclic Wind Pressure Loading per FBC, TAS 203-94
6) Forced Entry Test, per FBC 2411 3.2.1, TAS 202-94
Along with installation diagram prepared by Fenestration Testing Laboratory, Inc., Test Report No.**FTL-3088** dated 11/19/01, signed and sealed by Luis Figueredo, P.E.
2. Test reports on 1) Air Infiltration Test, per FBC, TAS 202-94
2) Uniform Static Air Pressure Test, Loading per FBC TAS 202-94
3) Water Resistance Test, per FBC, TAS 202-94
4) Large Missile Impact Test per FBC, TAS 201-94
5) Cyclic Wind Pressure Loading per FBC, TAS 203-94
6) Forced Entry Test, per FBC 2411 3.2.1, TAS 202-94
Along with installation diagram prepared by Fenestration Testing Laboratory, Inc., Test Report No.**FTL-2976** dated 03/02/01, signed and sealed by Antonio Acevedo, P.E.
3. Test reports on 1) Air Infiltration Test, per FBC, TAS 202-94
2) Uniform Static Air Pressure Test, Loading per FBC TAS 202-94
3) Water Resistance Test, per FBC, TAS 202-94
4) Large Missile Impact Test per FBC, TAS 201-94
5) Cyclic Wind Pressure Loading per FBC, TAS 203-94
6) Forced Entry Test, per FBC 2411 3.2.1, TAS 202-94
Along with installation diagram prepared by Fenestration Testing Laboratory, Inc., Test Report No.**FTL-2771** dated 01/15/01, signed and sealed by Antonio Acevedo, P.E.

C. CALCULATIONS

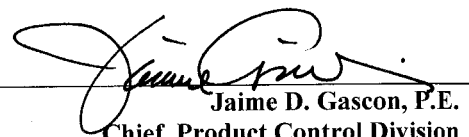
1. Anchor calculations and structural analysis, complying with FBC-2004, prepared by Al-Farooq Corporation, dated 08/22/06 and last revised on March 29, 2007, signed and sealed by Dr. Humayoun Farooq, P.E.
2. Glazing complies with ASTM E1300- 98/ 02

D. QUALITY ASSURANCE

1. Miami Dade Building Code Compliance Office (BCCO).

E. MATERIAL CERTIFICATIONS

1. None


Jaime D. Gascon, P.E.

Chief, Product Control Division
NOA No 06-1016.01
Expiration Date: January 23, 2013
Approval Date: April 26, 2007

T.M. Window & Door Co.

NOTICE OF ACCEPTANCE: EVIDENCE SUBMITTED

F. STATEMENTS (transferred from file # 03-0630.05)

1. Statement letter of conformance and no financial interest, prepared by Al Farooq Corporation, dated 06/09/06 & 08-21-06 respectively, signed and sealed by Dr. Humayoun Farooq, P.E.
2. Statement letter of compliance, part of above referenced test reports.

G. OTHER

1. None



Jaime D. Gascon, P.E.
Chief, Product Control Division
NOA No 06-1016.01
Expiration Date: January 23, 2013
Approval Date: April 26, 2007



AL-FAROOQ CORPORATION
 ENGINEERS & PRODUCT DEVELOPMENT
 1235 S.W. 87 AVE
 MIAMI, FLORIDA 33174
 TEL. (305) 264-8100 FAX. (305) 262-6978
 COMP-ANL\W02-115TMW

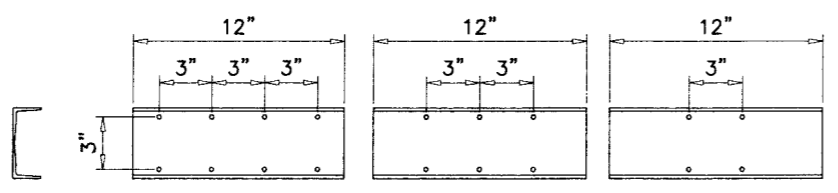
SERIES-350 ALUM. SLIDING GLASS DOOR (N.I.)
TM WINDOW AND DOOR
 601 N.W. 12TH AVE.
 POMPANO BEACH, FL. 33069
 TEL. (954) 781-4430 FAX. (954) 781-5078

no	date	description
A	07.14.06	UPDATED FOR 2004 FBC
B	03.16.07	REV. PER BCCO COMMENTS

revisions:
 no date by description
 A 07.14.06
 B 03.16.07

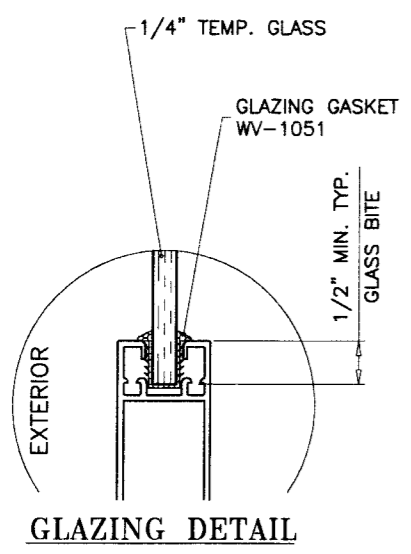
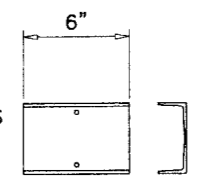
date: 12-02-02
 scale: 1/2" = 1"
 dr. by: HAMID
 chk. by:
 drawing no. **W02-115**
 sheet 1 of 7

DOORS WITH HEAD RECEPTORS
 12" LONG REINFORCING CHANNELS AT MTG. STILES
 6" LONG REINFORCING CHANNELS AT ENDS & INTERMEDIATE LOCATIONS.



CLUSTER OF ANCHORS
 SEE CHART ON SHEET 2

2 ANCHORS
 AT INTERMEDIATE PLACES
 AND AT ENDS



SERIES-350 ALUM. SLIDING GLASS DOOR

DOORS NOT RATED FOR IMPACT.
 MIAMI-DADE COUNTY APPROVED IMPACT RESISTANT SHUTTERS ARE REQD.
 SEE CHART ON SHEET 2 FOR ANCHOR OPTIONS.
 SEE SHEET 4 FOR ANCHOR DETAILS.
 SEE CHART ON SHEET 3 FOR GLASS AND REINFORCING OPTIONS.
 LOWER DESIGN PRESSURES FROM GLASS OR ANCHOR CHARTS WILL APPLY TO ENTIRE SYSTEM.

THIS PRODUCT HAS BEEN DESIGNED AND TESTED TO COMPLY WITH THE REQUIREMENTS OF THE FLORIDA BUILDING CODE 2004 EDITION INCLUDING HIGH VELOCITY HURRICANE ZONE (HVHZ).

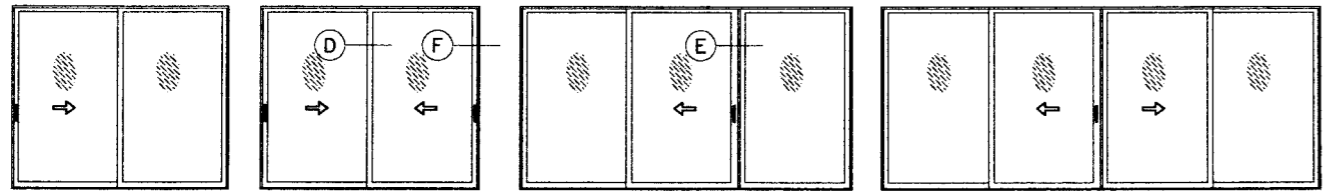
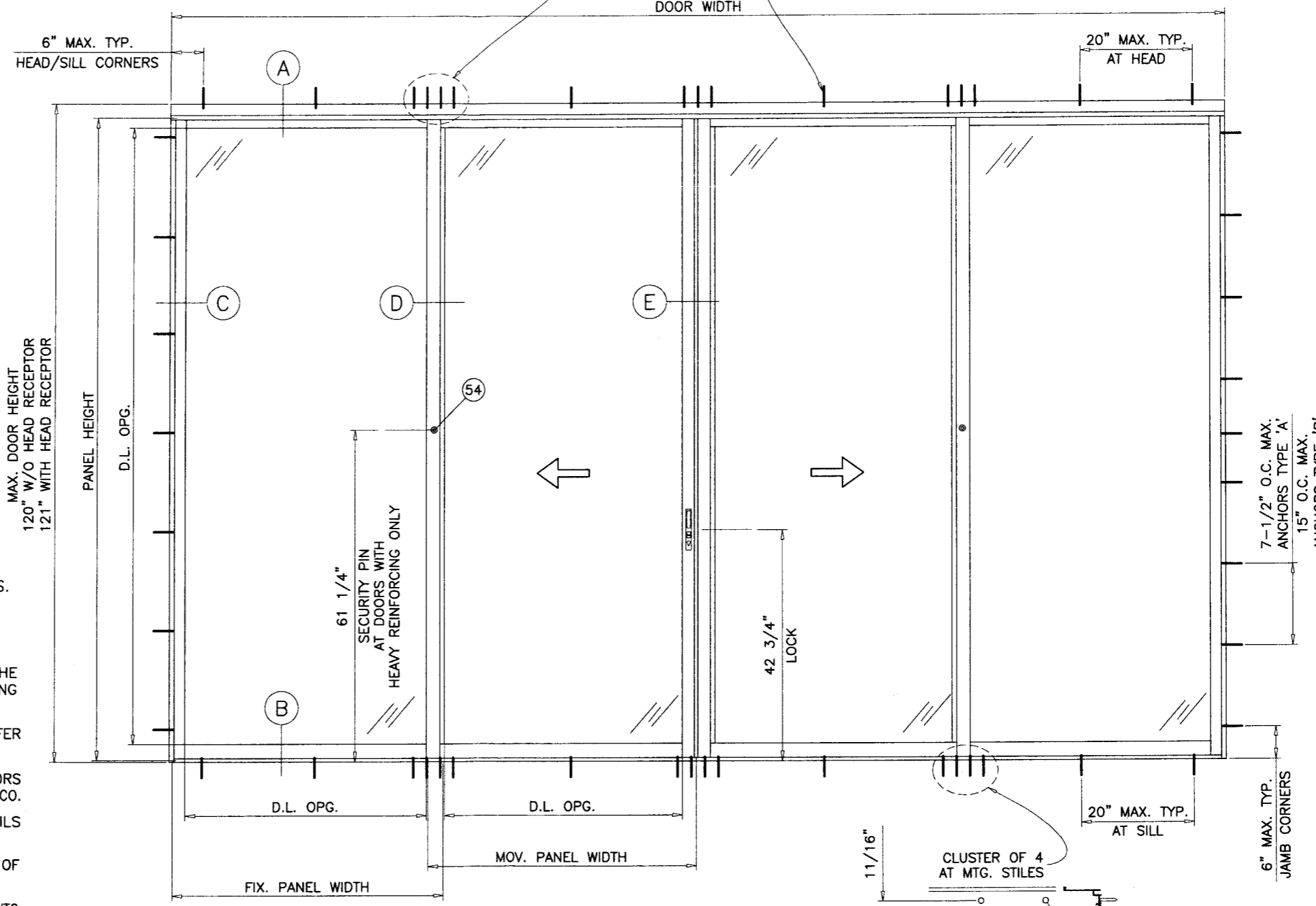
WOOD BUCKS BY OTHERS, MUST BE ANCHORED PROPERLY TO TRANSFER LOADS TO THE STRUCTURE.

ANCHORS SHALL BE AS LISTED, SPACED AS SHOWN ON DETAILS, ANCHORS EMBEDMENT TO BASE MATERIAL SHALL BE BEYOND WALL DRESSING OR STUCCO.

ANCHORING OR LOADING CONDITIONS NOT SHOWN IN THESE DETAILS ARE NOT PART OF THIS APPROVAL.

A LOAD DURATION INCREASE IN ALLOWABLE STRESS IS USED IN DESIGN OF ANCHORS INTO WOOD ONLY.

MATERIALS INCLUDING BUT NOT LIMITED TO STEEL/METAL SCREWS, THAT COME INTO CONTACT WITH OTHER DISSIMILAR MATERIALS SHALL MEET THE REQUIREMENTS OF 2004 FLORIDA BLDG. CODE SECTION 2003.8.4.



APPROVED CONFIGURATIONS

THIS ALSO APPROVES DOORS WITH MORE THAN 4 PANELS THAT CONTAIN THE STILE COMBINATIONS SHOWN IN THESE DETAILS.

Engr: DR. HUMAYOUN FAROOQ
 STRUCTURES
 FLA. PE # 16557
 C.A.N. 3538

MAR 29 2007

PRODUCT REVISED
 as complying with the Florida Building Code
 Acceptance No **06-1016-01**
 Expiration Date **01/23/2013**
 By *[Signature]*
 Miami Dade Product Control Division

DESIGN LOAD CAPACITY - PSF DOORS W/O HEAD RECEPTOR													
PANEL WIDTH FT./IN.	DOOR HEIGHT FT./IN.	LIGHT REINF.		MEDIUM REINFORCING				HEAVY REINFORCING					
		TYPE 'A' OR 'B'		TYPE 'A' OR 'B'				TYPE 'A' OR 'B'					
		A4 OR B4	A4 OR B4	A4 OR B4	A6 OR B6	A4 OR B4	A6 OR B6	A8 OR B8	A4 OR B4	A6 OR B6	A8 OR B8		
EXT.(+)	INT.(-)	EXT.(+)	INT.(-)	EXT.(+)	INT.(-)	EXT.(+)	INT.(-)	EXT.(+)	INT.(-)	EXT.(+)	INT.(-)		
2/0	6/8	100.0	141.0	100.0	171.5	100.0	210.0	100.0	171.5	100.0	210.0	100.0	210.0
2/6		100.0	118.0	100.0	143.6	100.0	210.0	100.0	143.6	100.0	210.0	100.0	210.0
3/0		100.0	103.1	100.0	125.4	100.0	184.2	100.0	125.4	100.0	188.1	100.0	194.0
3/6		92.9	92.9	100.0	113.0	100.0	165.9	100.0	113.0	100.0	169.5	100.0	169.0
4/0		85.6	85.6	100.0	104.1	100.0	152.9	100.0	104.1	100.0	156.2	100.0	160.8
4/6		80.4	80.4	97.8	97.8	100.0	143.6	97.8	97.8	100.0	146.7	100.0	155.6
5/0		-	-	93.3	93.3	100.0	137.0	93.3	93.3	100.0	140.0	100.0	149.0
2/0	8/0	100.0	114.1	100.0	138.9	100.0	203.9	100.0	138.9	100.0	208.3	100.0	210.0
2/6		94.7	94.7	100.0	115.2	100.0	169.2	100.0	115.2	100.0	172.8	100.0	193.3
3/0		81.9	81.9	99.7	99.7	100.0	146.4	99.7	99.7	100.0	149.5	100.0	167.3
3/6		73.0	73.0	88.9	88.9	100.0	130.5	88.9	88.9	100.0	133.3	100.0	135.7
4/0		66.6	66.6	81.0	81.0	100.0	119.0	81.0	81.0	100.0	121.5	100.0	123.9
4/6		-	-	75.1	75.1	100.0	110.3	75.1	75.1	100.0	112.7	100.0	120.8
5/0		-	-	-	-	-	-	70.7	70.7	100.0	106.0	100.0	118.6
2/0	9/0	87.2	87.2	100.0	121.5	100.0	178.4	100.0	121.5	100.0	182.3	100.0	203.9
2/6		70.5	70.5	100.0	100.3	100.0	147.4	100.3	100.3	100.0	150.5	100.0	168.4
3/0		59.6	59.6	86.4	86.4	100.0	126.9	86.4	86.4	100.0	129.6	100.0	145.0
3/6		51.9	51.9	76.6	76.6	100.0	112.5	76.6	76.6	100.0	114.9	100.0	122.9
4/0		-	-	69.4	69.4	100.0	102.0	69.4	69.4	100.0	104.1	100.0	107.0
4/6		-	-	-	-	-	-	64.0	64.0	96.0	96.0	100.0	101.9
5/0		-	-	-	-	-	-	-	-	-	-	-	-
2/0	9/6	74.0	74.0	100.0	114.4	100.0	164.0	100.0	114.4	100.0	171.5	100.0	191.9
2/6		59.7	59.7	94.3	94.3	100.0	132.5	94.3	94.3	100.0	141.4	100.0	158.2
3/0		50.4	50.4	81.0	81.0	100.0	111.8	81.0	81.0	100.0	121.5	100.0	135.9
3/6		-	-	71.7	71.7	97.2	97.2	71.7	71.7	100.0	107.5	100.0	118.8
4/0		-	-	-	-	-	-	64.8	64.8	97.2	97.2	100.0	100.9
2/0	10/0	63.3	63.3	100.0	108.0	100.0	140.4	100.0	108.0	100.0	162.0	100.0	181.2
2/6		51.1	51.1	88.9	88.9	100.0	113.3	88.9	88.9	100.0	133.3	100.0	149.1
3/0		43.0	43.0	76.2	76.2	95.5	95.5	76.2	76.2	100.0	114.4	100.0	127.9
3/6		-	-	67.3	67.3	82.9	82.9	67.3	67.3	100.0	101.0	100.0	113.0
4/0		-	-	-	-	-	-	60.8	60.8	91.1	91.1	96.3	96.3

A4, B4 = CLUSTER OF 4 ANCHORS W/O HEAD RECEPTOR
A6, B6 = CLUSTER OF 6 ANCHORS W/O HEAD RECEPTOR
A8, B8 = CLUSTER OF 8 ANCHORS W/O HEAD RECEPTOR
SEE SHEET 4 FOR DETAILS.

LOAD CAPACITIES SHOWN ABOVE ARE FOR DOORS USING 4-1/8" SILL HEIGHT
FOR DOORS USING 3-1/2" SILL HEIGHT LIMIT EXTERIOR(+) LOADS TO 90.0 PSF.

ANCHORS WITHOUT
HEAD RECEPTOR

TYPICAL ANCHORS: SEE ELEV./CHART FOR SPACING

TYPE 'A' 1/4" TAPCONS BY 'ELCO'

INTO 2BY WOOD BUCKS OR WOOD STRUCTURES
1-1/2" MIN. EMBED INTO MASONRY OR CONC.
THRU 1BY WOOD BUCKS INTO MASONRY OR CONC.
1-3/4" MIN. EMBED INTO MASONRY OR CONC.

TYPE 'B' 1/4" TAPCONS BY 'ELCO'

DIRECTLY INTO MASONRY OR CONC.
1-3/4" MIN. EMBED INTO MASONRY OR CONC.

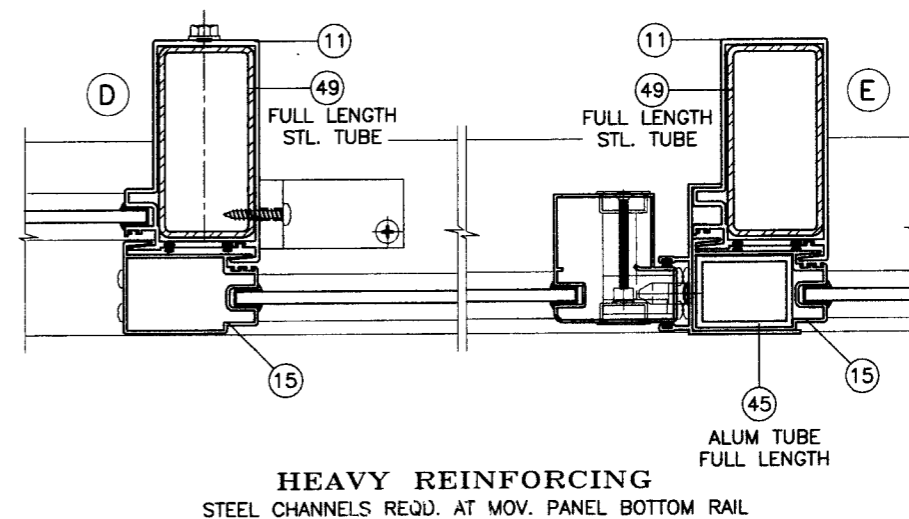
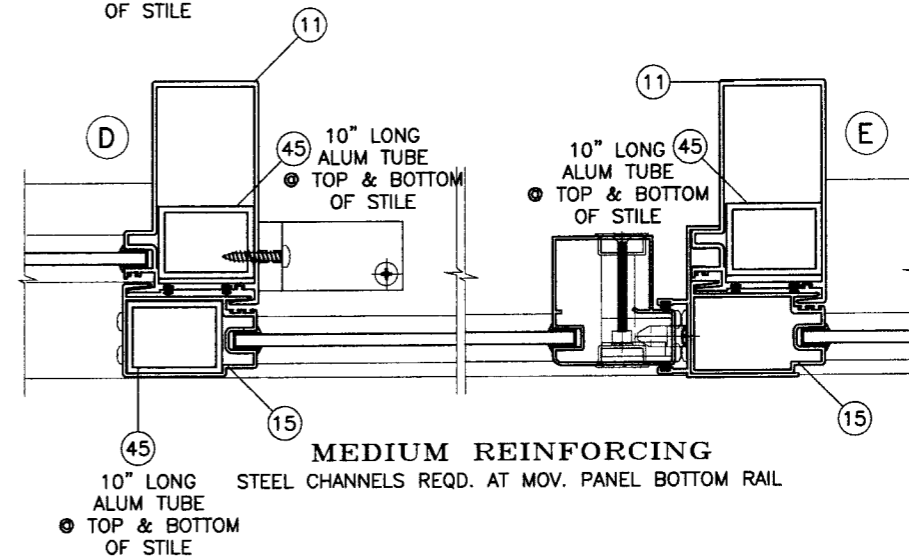
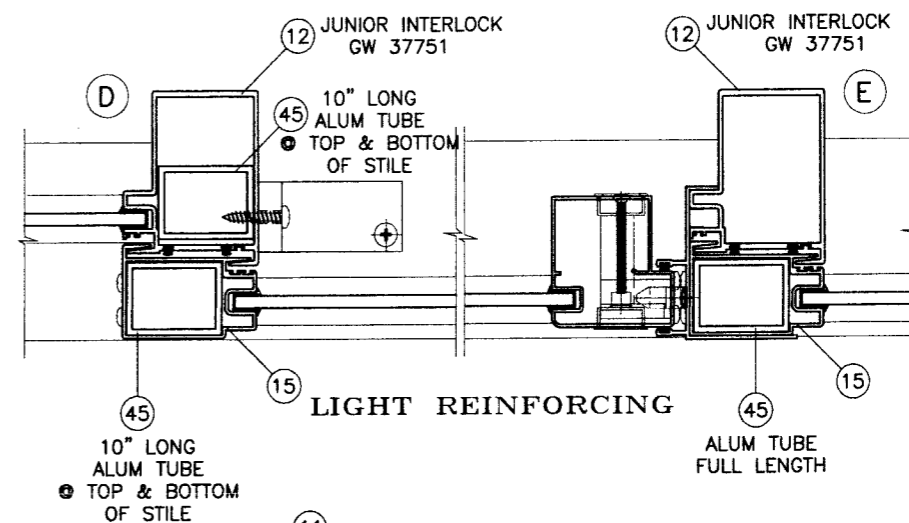
#14 SMS OR 1/4" DRILLFLEX SELF DRILLING SCREWS

INTO APPROVED MULLIONS OR METAL STRUCTURES
STEEL : 12 GA. MIN. (Fy = 36 KSI MIN.)
ALUMINUM : 1/8" THK. MIN. (6063-T5 MIN.)
(STEEL IN CONTACT WITH ALUMINUM TO BE PLATED OR PAINTED)

EDGE DISTANCES

INTO CONCRETE AND MASONRY = 2-1/2" MIN.
INTO WOOD STRUCTURE = 1" MIN.
INTO METAL STRUCTURE = 1/2" MIN.

NOTE:
GLASS CAPACITIES ON THIS SHEET ARE
BASED ON ASTM E1300-02 (3 SEC. GUSTS)
AND FLORIDA BUILDING COMMISSION
DECLARATORY STATEMENT DCA05-DEC-219



Engr. DR. HUMAYOUN FAROOQ
STRUCTURES
FLA. PE # 18557
C.A.N. 3538

PRODUCT REVISED
as complying with the Florida
Building Code
Acceptance No 06-1016-01
Expiration Date 01/23/2013

MAR 29 2007

By *[Signature]*
Miami Dade Product Control
Division

AL-FAROOQ CORPORATION
ENGINEERS & PRODUCT DEVELOPMENT
1235 S.W. 87 AVE
MIAMI, FLORIDA 33174
TEL. (305) 264-8100 FAX. (305) 262-6978
COMP-ANL\W02-115TMW

SERIES-350 ALUM. SLIDING GLASS DOOR (N.I.)
TM WINDOW AND DOOR
601 N.W. 12TH AVE.
POMPANO BEACH, FL. 33069
TEL. (954) 781-4430 FAX. (954) 781-5078

no	date	description
A	07.14.06	UPDATED FOR 2004 FBC
B	03.16.07	REV. PER BCCO COMMENTS

date: 12-02-02
scale: 1/2" = 1"
dr. by: HAMID
chk. by:

drawing no.
W02-115
sheet 2 of 7

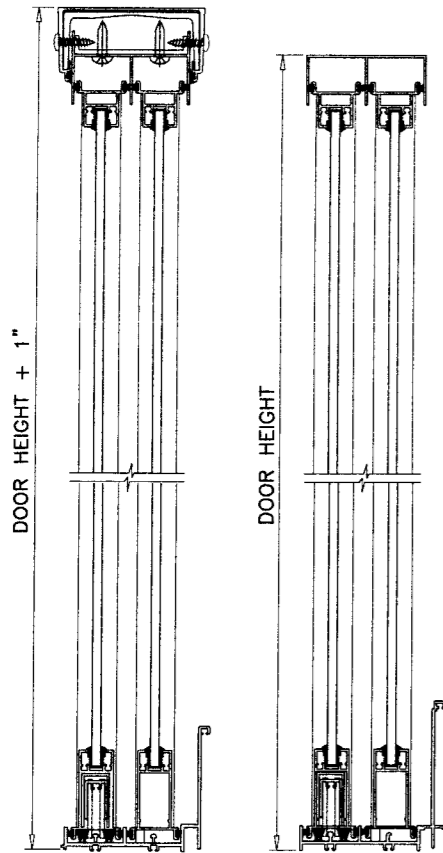


CHART AT RIGHT IS FOR DOOR HEIGHTS WITHOUT HEAD RECEPTOR.
DOORS USING HEAD RECEPTOR MAY BE 1" HIGHER THAN SHOWN (SEE SKETCH)

		DESIGN LOAD CAPACITY - PSF																												
		LIGHT REINF.				MEDIUM REINFORCING								HEAVY REINFORCING																
PANEL WIDTH FT./IN.	DOOR HEIGHT FT./IN.	TYPE 'C' OR 'D'		TYPE 'C'				TYPE 'D'				TYPE 'C'				TYPE 'D'														
		C4 OR D4		C4		C6		C8		D4		D6		C4		C6		C8		D4		D6		D8						
		EXT.(+)	INT.(-)	EXT.(+)	INT.(-)	EXT.(+)	INT.(-)	EXT.(+)	INT.(-)	EXT.(+)	INT.(-)	EXT.(+)	INT.(-)	EXT.(+)	INT.(-)	EXT.(+)	INT.(-)	EXT.(+)	INT.(-)	EXT.(+)	INT.(-)	EXT.(+)	INT.(-)	EXT.(+)	INT.(-)					
2/0	6/8	100.0	141.0	100.0	144.4	100.0	210.0	100.0	210.0	100.0	171.5	100.0	210.0	100.0	144.4	100.0	210.0	100.0	210.0	100.0	171.5	100.0	210.0	100.0	210.0					
2/6		100.0	118.0	100.0	120.8	100.0	181.2	100.0	210.0	100.0	143.6	100.0	210.0	100.0	120.8	100.0	181.2	100.0	210.0	100.0	143.6	100.0	210.0	100.0	210.0					
3/0		100.0	103.1	100.0	105.5	100.0	158.3	100.0	184.2	100.0	125.4	100.0	184.2	100.0	105.5	100.0	158.3	100.0	194.0	100.0	125.4	100.0	188.1	100.0	194.0					
3/6		92.9	92.9	95.1	95.1	100.0	142.6	100.0	165.9	100.0	113.0	100.0	165.9	95.1	95.1	100.0	142.6	100.0	169.0	100.0	113.0	100.0	169.5	100.0	169.0					
4/0		85.6	85.6	87.6	87.6	100.0	131.5	100.0	152.9	100.0	104.1	100.0	152.9	87.6	87.6	100.0	131.5	100.0	160.8	100.0	104.1	100.0	156.2	100.0	160.8					
4/6		80.4	80.4	82.3	82.3	100.0	123.5	100.0	143.6	97.8	97.8	100.0	143.6	82.3	82.3	100.0	123.5	100.0	155.6	97.8	97.8	100.0	146.7	100.0	155.6					
5/0	-	-	78.5	78.5	100.0	117.8	100.0	137.0	93.3	93.3	100.0	137.0	78.5	78.5	100.0	117.8	100.0	149.0	93.3	93.3	100.0	140.0	100.0	149.0						
2/0	8/0	100.0	114.1	100.0	116.9	100.0	175.3	100.0	203.9	100.0	138.9	100.0	203.9	100.0	116.9	100.0	175.3	100.0	210.0	100.0	138.9	100.0	208.3	100.0	210.0					
2/6		94.7	94.7	96.9	96.9	100.0	145.4	100.0	169.2	100.0	115.2	100.0	169.2	96.9	96.9	100.0	145.4	100.0	193.3	100.0	115.2	100.0	172.8	100.0	193.3					
3/0		81.9	81.9	83.9	83.9	100.0	125.8	100.0	146.4	99.7	99.7	100.0	146.4	83.9	83.9	100.0	125.8	100.0	167.3	99.7	99.7	100.0	149.5	100.0	167.3					
3/6		73.0	73.0	74.8	74.8	100.0	112.2	100.0	130.5	88.9	88.9	100.0	130.5	74.8	74.8	100.0	112.2	100.0	135.7	88.9	88.9	100.0	133.3	100.0	135.7					
4/0		66.6	66.6	68.2	68.2	100.0	102.3	100.0	119.0	81.0	81.0	100.0	119.0	68.2	68.2	100.0	102.3	100.0	123.9	81.0	81.0	100.0	121.5	100.0	123.9					
4/6		-	-	63.2	63.2	94.8	94.8	100.0	110.3	75.1	75.1	100.0	110.3	63.2	63.2	94.8	94.8	100.0	120.8	75.1	75.1	100.0	112.7	100.0	120.8					
5/0	-	-	-	-	-	-	-	-	-	-	-	-	-	-	-	-	-	59.5	59.5	89.2	89.2	100.0	118.6	70.7	70.7	100.0	106.0	100.0	118.6	
2/0	9/0	87.2	87.2	100.0	102.3	100.0	153.4	100.0	178.4	100.0	121.5	100.0	178.4	100.0	102.3	100.0	153.4	100.0	203.9	100.0	121.5	100.0	182.3	100.0	203.9					
2/6		70.5	70.5	84.4	84.4	100.0	126.7	100.0	147.4	100.0	100.3	100.0	147.4	84.4	84.4	100.0	126.7	100.0	168.4	100.3	100.3	100.0	150.5	100.0	168.4					
3/0		59.6	59.6	72.7	72.7	100.0	109.1	100.0	126.9	86.4	86.4	100.0	126.9	72.7	72.7	100.0	109.1	100.0	145.0	100.0	86.4	100.0	129.6	100.0	145.0					
3/6		51.9	51.9	64.5	64.5	96.7	96.7	100.0	112.5	76.6	76.6	100.0	112.5	64.5	64.5	96.7	96.7	100.0	122.9	76.6	76.6	100.0	114.9	100.0	122.9					
4/0		-	-	58.4	58.4	87.6	87.6	100.0	102.0	69.4	69.4	100.0	102.0	58.4	58.4	87.6	87.6	100.0	107.0	69.4	69.4	100.0	104.1	100.0	107.0					
4/6		-	-	-	-	-	-	-	-	-	-	-	-	-	-	-	-	-	53.9	53.9	80.8	80.8	100.0	101.9	64.0	64.0	96.0	96.0	100.0	101.9
2/0	9/6	74.0	74.0	96.2	96.2	100.0	144.4	100.0	164.0	100.0	114.4	100.0	164.0	96.2	96.2	100.0	144.4	100.0	191.9	100.0	114.4	100.0	171.5	100.0	191.9					
2/6		59.7	59.7	79.3	79.3	100.0	119.0	100.0	132.5	94.3	94.3	100.0	132.5	79.3	79.3	100.0	119.0	100.0	158.2	94.3	94.3	100.0	141.4	100.0	158.2					
3/0		50.4	50.4	68.2	68.2	100.0	102.3	100.0	111.8	81.0	81.0	100.0	111.8	68.2	68.2	100.0	102.3	100.0	135.9	81.0	81.0	100.0	121.5	100.0	135.9					
3/6		-	-	60.3	60.3	90.5	90.5	97.2	97.2	71.7	71.7	97.2	97.2	60.3	60.3	90.5	90.5	100.0	118.8	71.7	71.7	100.0	107.5	100.0	118.8					
4/0		-	-	-	-	-	-	-	-	-	-	-	-	-	-	-	-	-	54.5	54.5	81.8	81.8	100.0	100.9	64.8	64.8	97.2	97.2	100.0	100.9
2/0		10/0	63.3	63.3	90.9	90.9	100.0	136.3	100.0	140.4	100.0	108.0	100.0	140.4	90.9	90.9	100.0	136.3	100.0	181.2	100.0	108.0	100.0	162.0	100.0	181.2				
2/6	51.1		51.1	74.8	74.8	100.0	112.2	100.0	113.3	88.9	88.9	100.0	113.3	74.8	74.8	100.0	112.2	100.0	149.1	88.9	88.9	100.0	133.3	100.0	149.1					
3/0	43.0		43.0	64.2	64.2	95.5	95.5	95.5	95.5	76.2	76.2	95.5	95.5	64.2	64.2	96.2	96.2	100.0	127.9	76.2	76.2	100.0	114.4	100.0	127.9					
3/6	-		-	56.7	56.7	82.9	82.9	82.9	82.9	67.3	67.3	82.9	82.9	56.7	56.7	85.0	85.0	100.0	113.0	67.3	67.3	100.0	101.0	100.0	113.0					
4/0	-		-	-	-	-	-	-	-	-	-	-	-	-	-	-	-	-	51.1	51.1	76.7	76.7	96.3	96.3	60.8	60.8	91.1	91.1	96.3	96.3

C4, D4 = CLUSTER OF 4 ANCHORS WITH HEAD RECEPTOR
C6, D6 = CLUSTER OF 6 ANCHORS WITH HEAD RECEPTOR
C8, D8 = CLUSTER OF 8 ANCHORS WITH HEAD RECEPTOR
SEE SHEET 4 FOR DETAILS.

LOAD CAPACITIES SHOWN ABOVE ARE FOR DOORS USING 4-1/8" SILL HEIGHT
FOR DOORS USING 3-1/2" SILL HEIGHT LIMIT EXTERIOR(+) LOADS TO 90.0 PSF.

ANCHORS WITH HEAD RECEPTOR

TYPE 'C' 1/4" TAPCONS BY 'ELCO'
INTO 2BY WOOD BUCKS OR WOOD STRUCTURES
1-1/2" MIN. EMBED INTO MASONRY OR CONC.
THRU 1BY WOOD BUCKS INTO MASONRY OR CONC.
1-3/4" MIN. EMBED INTO MASONRY OR CONC.

TYPE 'D' 1/4" TAPCONS BY 'ELCO'
DIRECTLY INTO MASONRY OR CONC.
1-3/4" MIN. EMBED INTO MASONRY OR CONC.

EDGE DISTANCES
INTO CONCRETE AND MASONRY = 2-1/2" MIN.
INTO WOOD STRUCTURE = 1" MIN.
INTO METAL STRUCTURE = 1/2" MIN.

NOTE:
GLASS CAPACITIES ON THIS SHEET ARE
BASED ON ASTM E1300-02 (3 SEC. GUSTS)
AND FLORIDA BUILDING COMMISSION
DECLARATORY STATEMENT DCA05-DEC-219

Engr. DR. HUMAYOUN FAROOQ
STRUCTURES
FLA. PE # 16557
C.A.N. 3538

MAR 29 2007

PRODUCT REVISED
as complying with the Florida
Building Code
Acceptance No 06-1016.01
Expiration Date 01/23/2013

By *[Signature]*
Miami-Dade Product Control
Division

afC

AL-FAROOQ CORPORATION
ENGINEERS & PRODUCT DEVELOPMENT
1235 S.W. 87 AVE
MIAMI, FLORIDA 33174
TEL. (305) 264-8100 FAX. (305) 262-6978
COMP-ANL\W02-115TMW

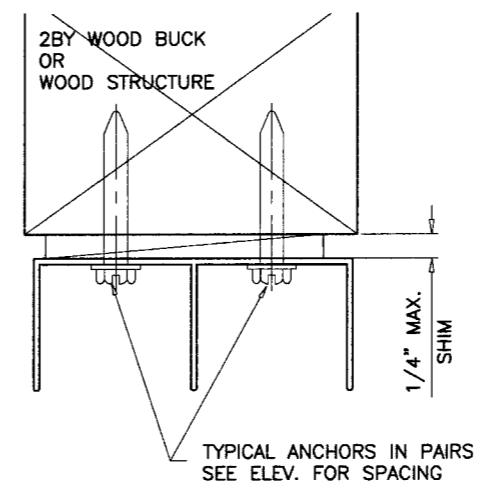
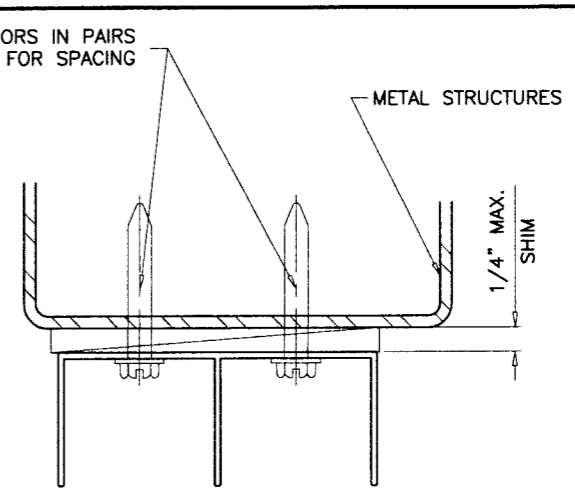
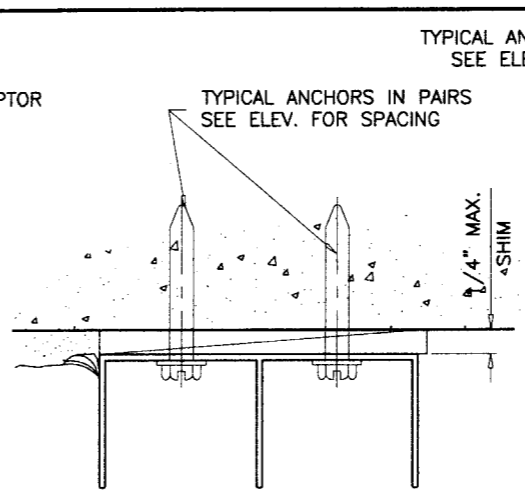
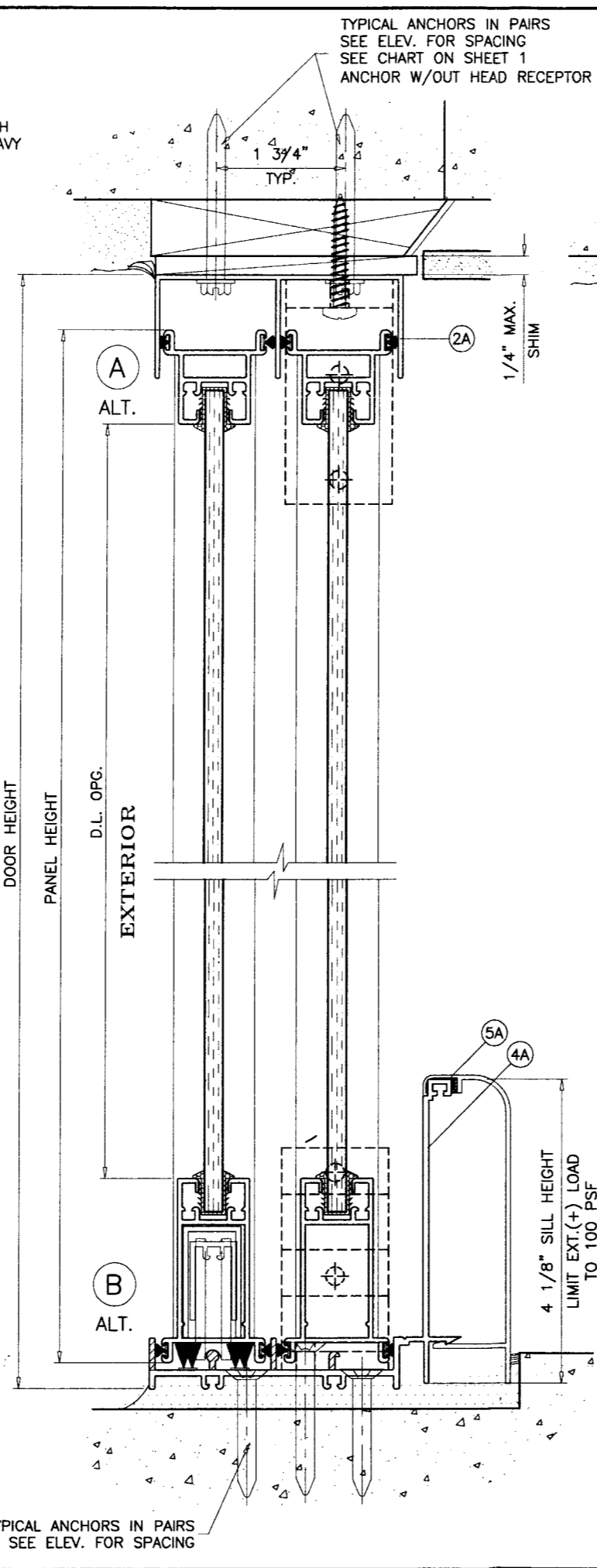
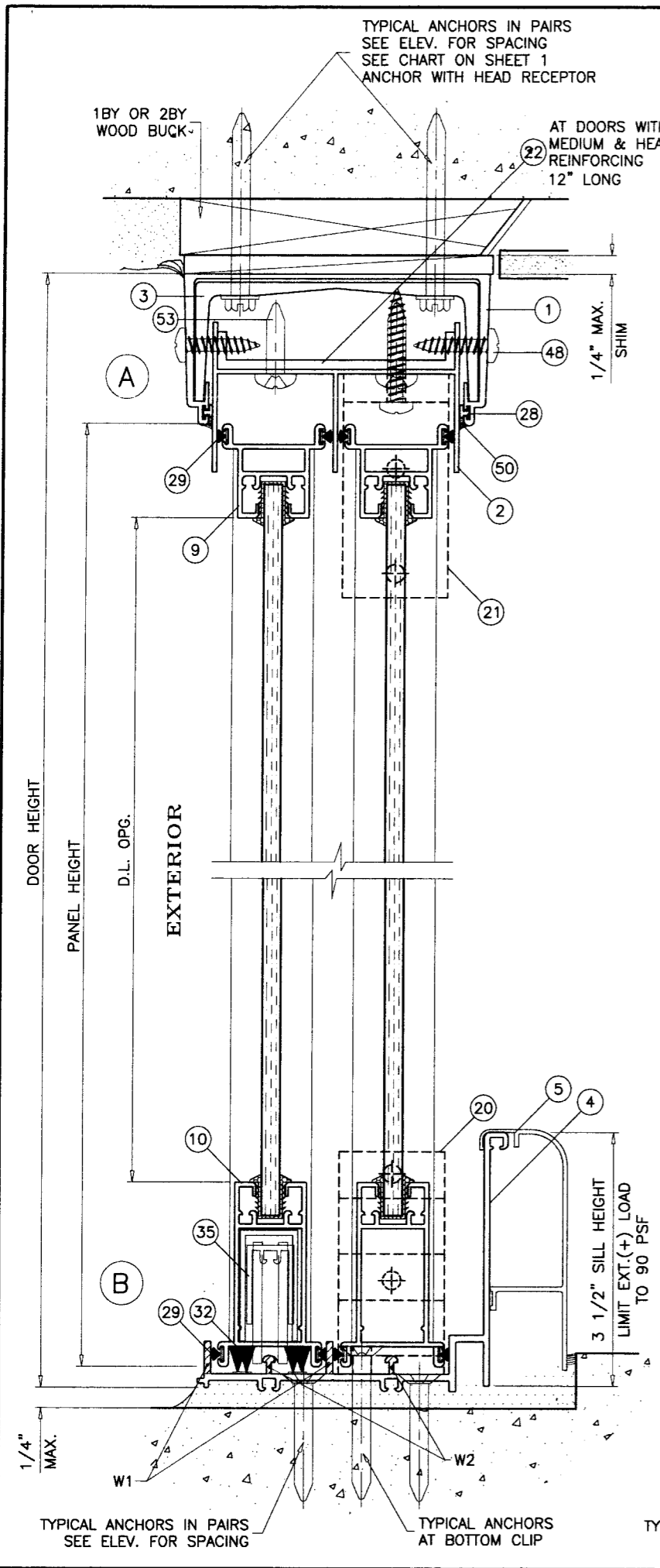
SERIES-350 ALUM. SLIDING GLASS DOOR (N.I.)

TM WINDOW AND DOOR
601 N.W. 12TH AVE.
POMPANO BEACH, FL. 33069
TEL. (954) 781-4430 FAX. (954) 781-5078

revisions:	no	date	description
	A	07.14.06	UPDATED FOR 2004 FBC
	B	03.16.07	REV. PER BCCO COMMENTS

date: 12-02-02
scale: 1/2" = 1"
dr. by: HAMID
chk. by:

drawing no. **W02-115**
sheet 3 of 7



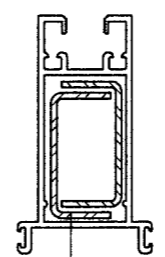
SEALANTS:

FIXED PANEL STILE TO FRAME, PANEL AND FRAME CORNERS AND HEAD RECEPTOR TO FRAME SEALED WITH CLEAR COLORED SILICONE.

WEEPHOLES:

- W1 = (4) 1" WEEP NOTCH
ONE AT EACH END OF EACH PANEL
- W2 = (4) 3/8" WEEP NOTCH
ONE AT EACH END OF EACH PANEL

WOOD BUCKS AND METAL STRUCTURE NOT BY TM WINDOWS MUST SUSTAIN LOADS IMPOSED BY GLAZING SYSTEM AND TRANSFER THEM TO THE BUILDING STRUCTURE.



23 AT DOORS WITH MEDIUM & HEAVY REINFORCING
MOV. PANEL BOTTOM RAIL

Engr: DR. HUMAYOUN FAROOQ
STRUCTURES
FLA. PE # 16557
C.A.N. 3538

MAR 29 2007

PRODUCT REVISED
as complying with the Florida Building Code
Acceptance No 06-1016.01
Expiration Date 01/23/2013
By *[Signature]*
Miami Dade Product Control Division

af c
AL-FAROOQ CORPORATION
ENGINEERS & PRODUCT DEVELOPMENT
1235 S.W. 87 AVE
MIAMI, FLORIDA 33174
TEL. (305) 264-8100 FAX. (305) 262-6978
COMP-ANL\W02-115TMW

SERIES-350 ALUM. SLIDING GLASS DOOR (N.I.)
TM WINDOW AND DOOR
601 N.W. 12TH AVE.
POMPANO BEACH, FL. 33069
TEL. (954) 781-4430 FAX. (954) 781-5078

no	date	description
A	07.14.06	UPDATED FOR 2004 FBC
B	03.16.07	REV. PER BCCO COMMENTS

revisions:
date: 12-02-02
scale: 1/2" = 1"
dr. by: HAMID
chk. by:

drawing no.
W02-115
sheet 4 of 7

TYPICAL ANCHORS
SEE ELEV. FOR SPACING

PANEL WIDTH

D.L. OPG.

1/4" MAX.
SHIM

C

D

E

#10 X 1" PH SMS
AT 36" O.C.

AT DOORS WITH
MEDIUM & HEAVY
REINFORCING

5/16" X 1-1/4"
DRIVE PINS
2/ ANGLE

EXTERIOR

D.L. OPG.

PANEL WIDTH

DOOR WIDTH

SEE SHEET 2 FOR REINFORCING SCHEDULE

TYPICAL ANCHORS
SEE ELEV. FOR SPACING

1/4" SHIM
MAX.

F

TYPICAL ANCHORS
SEE ELEV. FOR SPACING

1/4" MAX.
SHIM

TYPICAL ANCHORS
SEE ELEV. FOR SPACING

1/4" MAX.
SHIM

METAL STRUCTURES

ATTACHMENT TO METAL STRUCTURES
STEEL OR ALUMINUM

ATTACHMENT TO CONCRETE
OR CONC. BLOCK

Engr. DR. HUMAYOON FAROOQ
STRUCTURES
FLA. FE # 16557
C.A.N. 3538

PRODUCT REVISED
as complying with the Florida
Building Code
Acceptance No. 06-106-01
Expiration Date 01/23/2013

MAR 29 2007

By *[Signature]*
Miami Code Product Control
Division

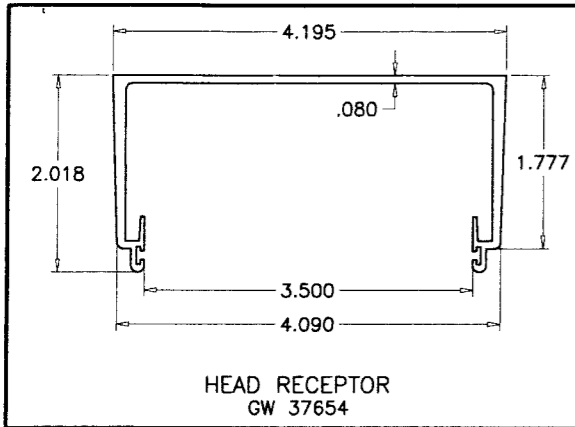
afc
AL-FAROOQ CORPORATION
ENGINEERS & PRODUCT DEVELOPMENT
1235 S.W. 87 AVE
MIAMI, FLORIDA 33174
TEL. (305) 262-6978 FAX. (305) 262-6978
COMP-ANL\W02-115TMW

SERIES-350 ALUM. SLIDING GLASS DOOR (N.I.)
TM WINDOW AND DOOR
601 N.W. 12TH AVE.
POMPANO BEACH, FL. 33069
TEL. (954) 781-4430 FAX. (954) 781-5078

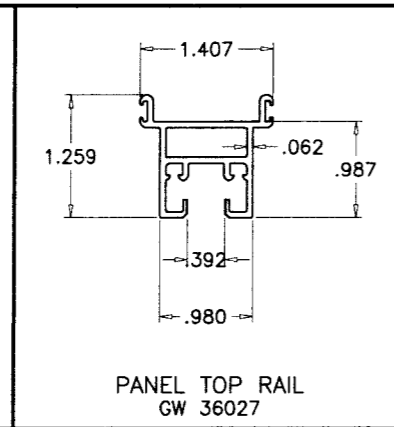
no	date	description
A	07.14.06	UPDATED FOR 2004 FBC
B	03.16.07	REV. PER BCCO COMMENTS

date: 12-02-02
scale: 1/2" = 1"
dr. by: HAMID
chk. by:

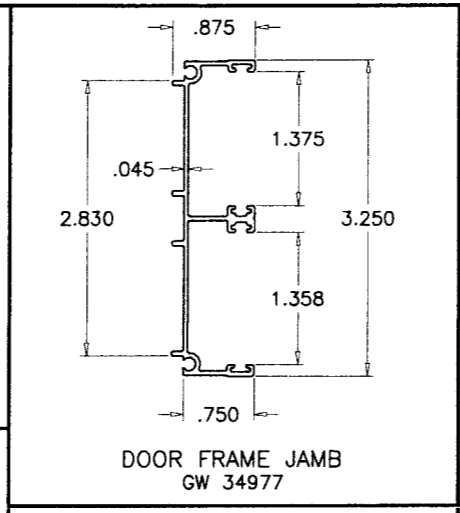
drawing no.
W02-115
sheet 5 of 7



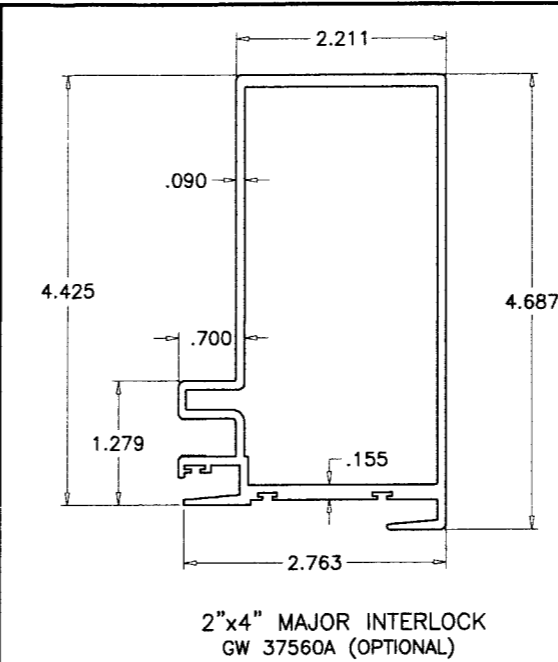
HEAD RECEPTOR
GW 37654



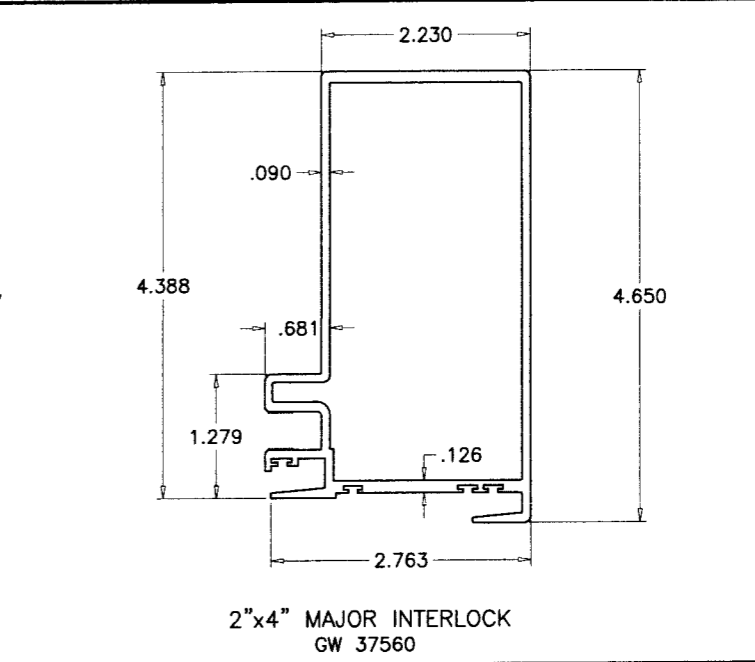
PANEL TOP RAIL
GW 36027



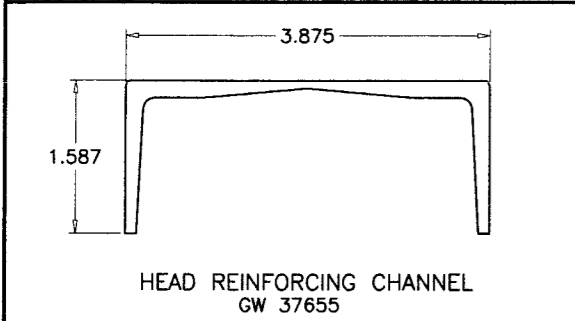
DOOR FRAME JAMB
GW 34977



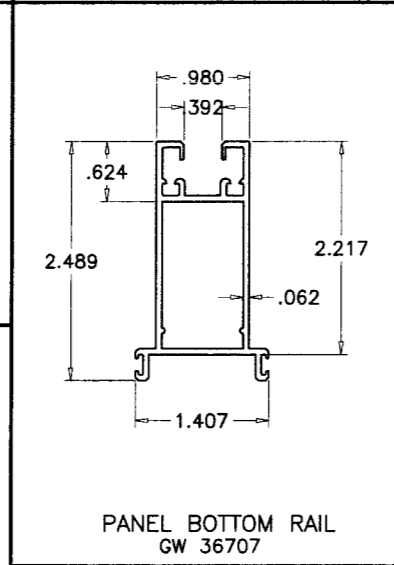
2"x4" MAJOR INTERLOCK
GW 37560A (OPTIONAL)



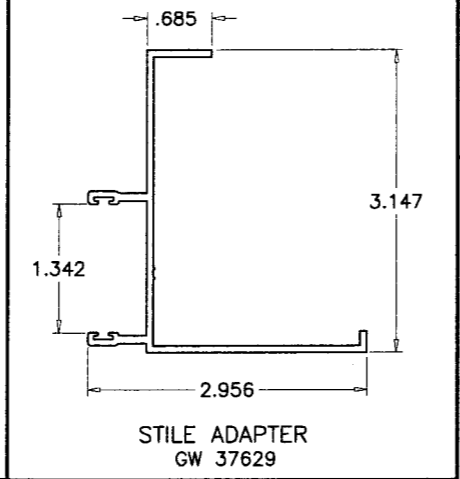
2"x4" MAJOR INTERLOCK
GW 37560



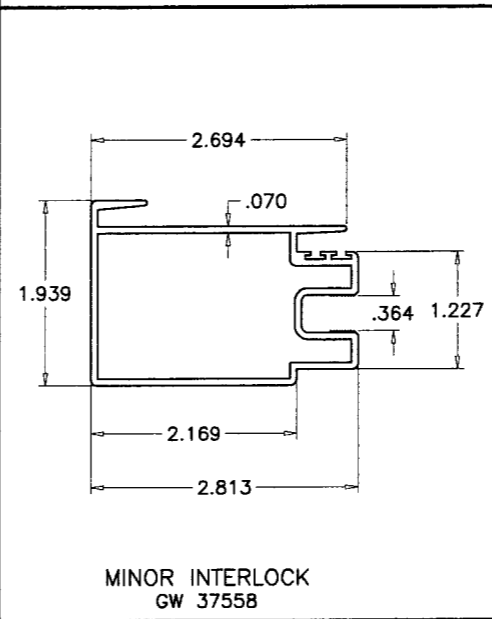
HEAD REINFORCING CHANNEL
GW 37655



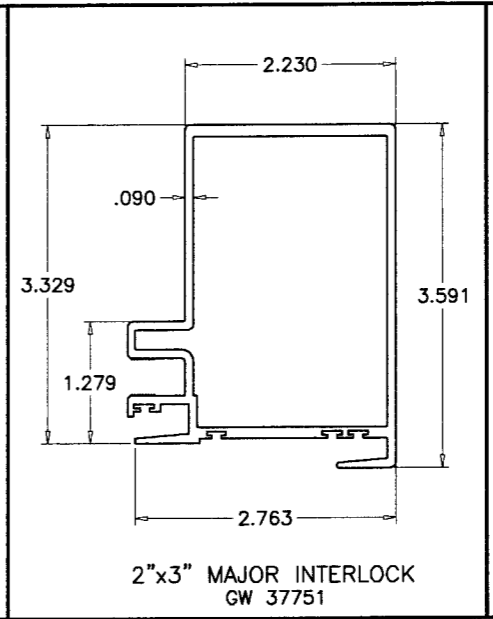
PANEL BOTTOM RAIL
GW 36707



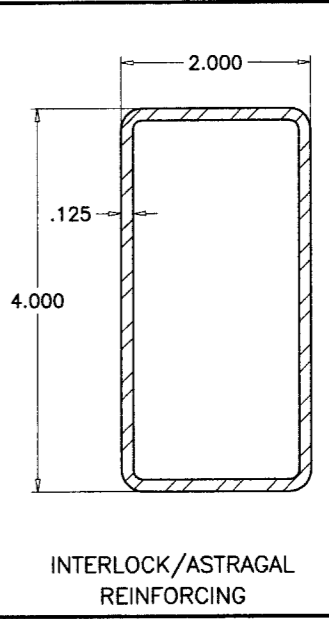
STILE ADAPTER
GW 37629



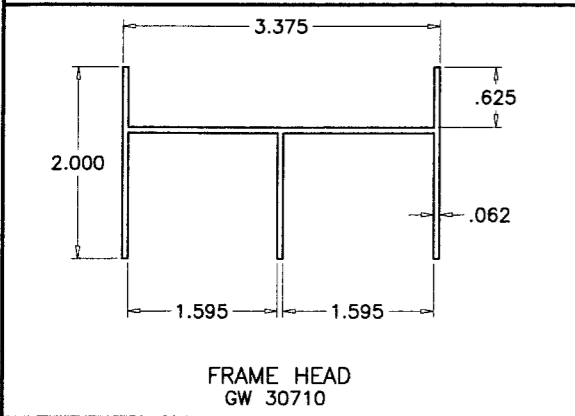
MINOR INTERLOCK
GW 37558



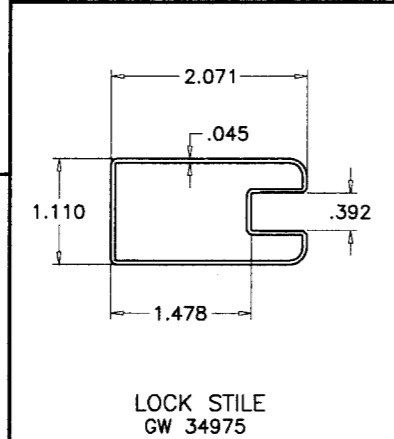
2"x3" MAJOR INTERLOCK
GW 37751



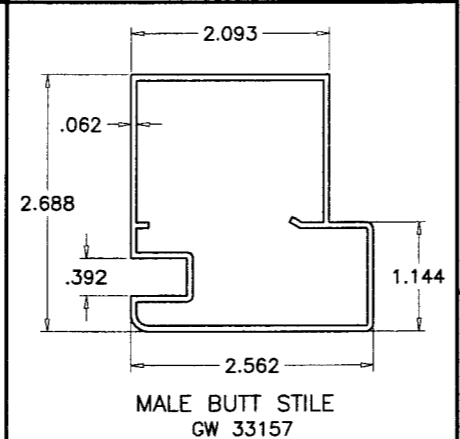
INTERLOCK/ASTRAGAL
REINFORCING



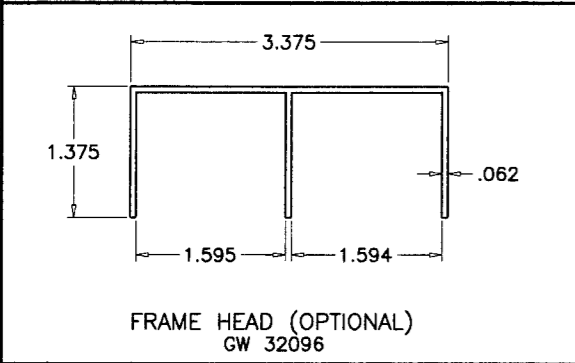
FRAME HEAD
GW 30710



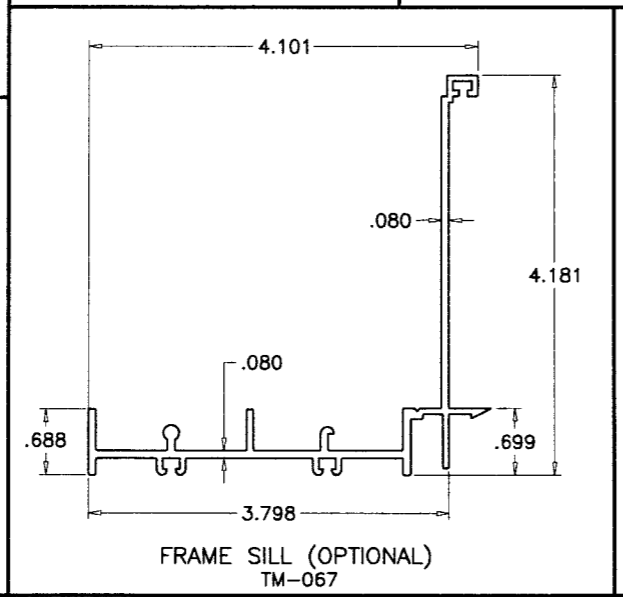
LOCK STILE
GW 34975



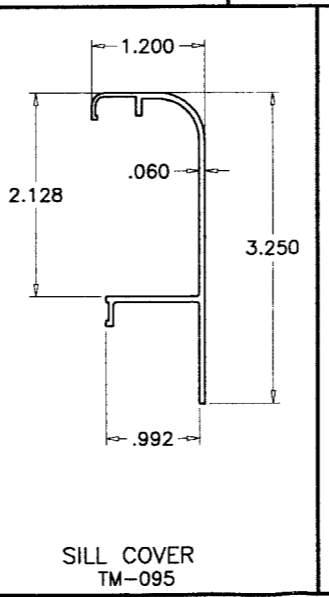
MALE BUTT STILE
GW 33157



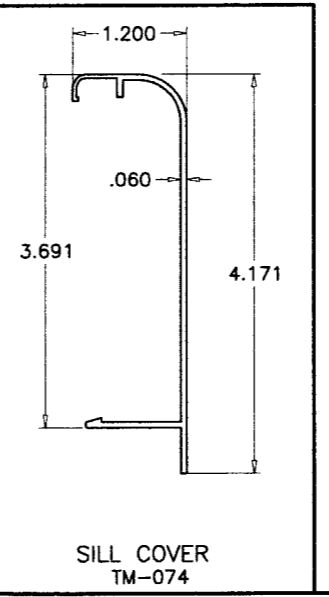
FRAME HEAD (OPTIONAL)
GW 32096



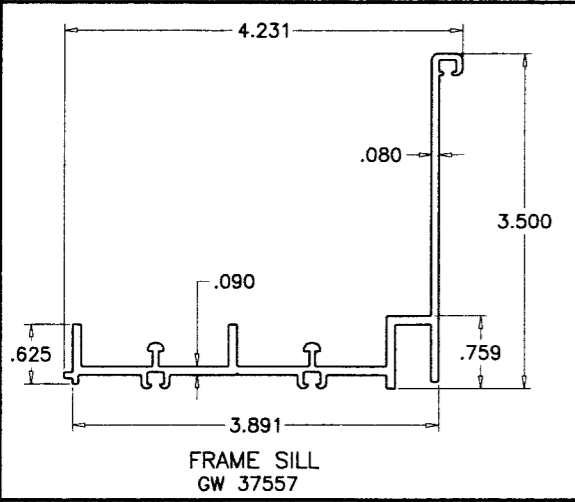
FRAME SILL (OPTIONAL)
TM-067



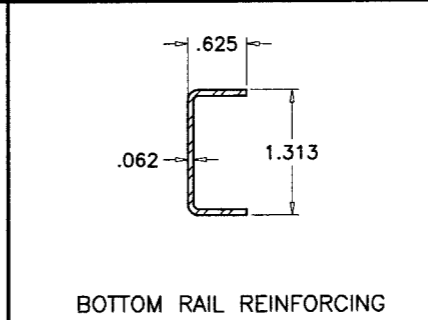
SILL COVER
TM-095



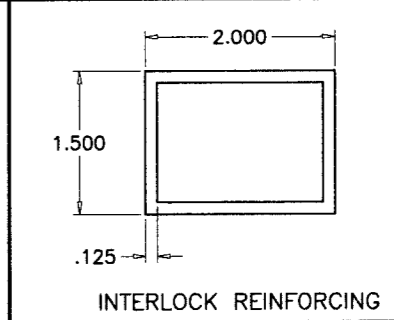
SILL COVER
TM-074



FRAME SILL
GW 37557



BOTTOM RAIL REINFORCING



INTERLOCK REINFORCING

Eng: DR. HUMAYGUN FAROOQ
STRUCTURES
FLA. PE # 16557
C.A.N. 3538

MAR 29 2007

PRODUCT REVISED
as complying with the Florida
Building Code
Acceptance No 06-1016.01
Expiration Date 01/23/2013
By *[Signature]*
Miami Date Product Control
Division

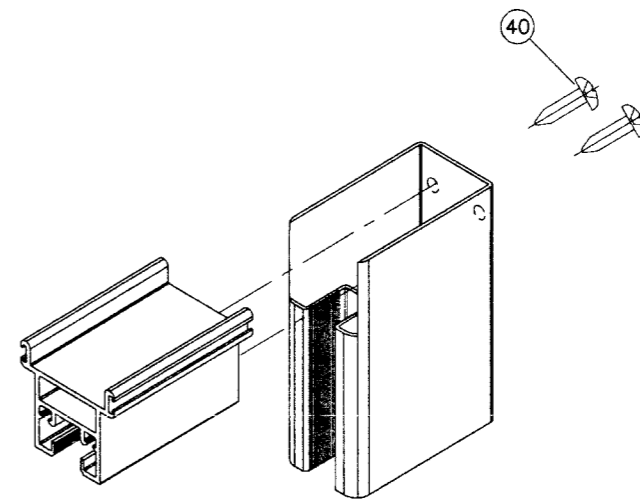
af c
AL-FAROOQ CORPORATION
ENGINEERS & PRODUCT DEVELOPMENT
1235 S.W. 87 AVE
MIAMI, FLORIDA 33174
TEL. (305) 264-8100 FAX. (305) 262-6978
COMP-ANL\W02-115TMW

SERIES-350 ALUM. SLIDING GLASS DOOR (N.I.)
TM WINDOW AND DOOR
601 N.W. 12TH AVE.
POMPANO BEACH, FL. 33069
TEL. (954) 781-4430 FAX. (954) 781-5078

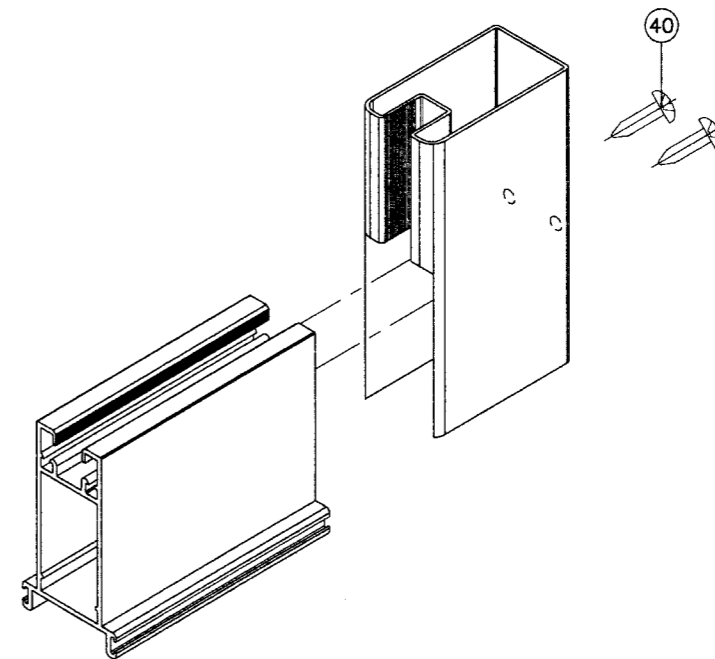
no	date	by	description
A	07.14.06		UPDATED FOR 2004 FBC
B	03.16.07		REV. PER BCCO COMMENTS

date: 12-02-02
scale: 1/2" = 1"
dr. by: HAMID
chk. by:
drawing no.
W02-115
sheet 6 of 7

ITEM	PART #	QUANTITY	DESCRIPTION	MATERIAL	MANF./SUPPLIER/REMARKS
1	GW 37654	1	HEAD RECEPTOR	ALUM-6063 T6	FRAME TOP
2	GW 30710	1	FRAME HEAD	ALUM-6063 T6	FRAME TOP
2A	GW 32096	1	FRAME HEAD (OPTIONAL)	ALUM-6063 T6	FRAME TOP
3	GW 37655	6	HEAD RECEPTOR REINFORCEMENT (6" LONG)	ALUM-6063 T6	AT HEAD ENDS & CENTER LINE OF PANELS
3A	GW 37655	3	HEAD RECEPTOR REINFORCEMENT (12" LONG)	ALUM-6063 T6	AT ASTRAGAL & INTERLOCK LOCATIONS
4	GW 37557	1	3 1/2" SILL	ALUM-6063 T6	FRAME BOTTOM
4A	TM-067	1	4 1/4" SILL	ALUM-6063 T6	FRAME BOTTOM
5	TM-095	1	DECORATIVE SILL COVER (OPTIONAL)	ALUM-6063 T5	FRAME BOTTOM
5A	TM-074	1	DECORATIVE SILL COVER (OPTIONAL)	ALUM-6063 T5	FRAME BOTTOM
8	GW 34977	2	FRAME JAMB (TWO TRACKS)	ALUM-6063 T6	FRAME SIDE
9	GW 36027	4	TOP RAIL	ALUM-6063 T6	PANEL TOP
10	GW 36707	4	BOTTOM RAIL	ALUM-6063 T6	PANEL BOTTOM
11	GW 37560	2	2"x4" MAJOR INTERLOCK	ALUM-6063 T6	PANEL SIDES
12	GW 37751	2	2"x3" MAJOR INTERLOCK	ALUM-6063 T5	PANEL SIDES
15	GW 37558	2	MINOR INTERLOCK	ALUM-6063 T5	PANEL SIDES
16	GW 33157	1	MALE BUTT STILE	ALUM-6063 T6	PANEL ASTRAGAL
17	GW 37629	1	STILE ADAPTER	ALUM-6063 T5	PANEL ASTRAGAL
18	GW 34975	2	LOCK STILE	ALUM-6063 T6	PANEL SIDES
20	FXD 37743	2	BOTTOM CLIP (3x3x1/4x1 7/16" LG. ANGLE)	ALUMINUM	FRAME SILL
21	TP 37743	2	TOP CLIP (3x3x1/4x1 7/16" LG. ANGLE)	ALUMINUM	FRAME HEAD
22	-	3	3 1/4" X 1/2" X 1/8" X 12" LG. REINF. CHANNEL	ALUMINUM	ABOVE INTERLOCKS & ASTRAGAL STILES
23	-	2/MOV. PANEL	5/8" X 1-5/16" X 1/16" THK. CHANNEL, LENGTH = PANEL WIDTH - 8"	STEEL	IN BOTTOM RAIL
28	WV-3033	AS REQ'D	BULB TYPE VINYL	VINYL	HEAD RECEPTOR
29	4020-PILE	SINGLE ROW	"ULTRAFAB" FIN SEAL WEATHERSTRIP	WOOL	TOP & BOTTOM RAILS
30	4037-PILE	2/ROWS	"ULTRAFAB" FIN SEAL WEATHERSTRIP	WOOL	INTERIOR INTERLOCKS STILES
31	4020-PILE	SINGLE ROW	"ULTRAFAB" FIN SEAL WEATHERSTRIP	WOOL	FRAME JAMB/ASTRAGAL
32	-	2	1/2" x 2" LONG SELF ADHESIVE PILE PAD	WOOL	AT FRAME SILL
33	-	1	7/8" x 3" LONG SELF ADHESIVE PILE PAD	WOOL	AT FRAME HEAD
35	TM-36205	4	TM TANDEM ROLLER ASSEMBLY	ALUMINUM/NYLON	BOTTOM ACTIVE PANELS
36	TM-32476	1	TM LATCH ASSEMBLY	ALUMINUM/VINYL	MALE ASTRAGAL
37	TM-32424	1	TM KEEPER	ALUMINUM	FEMALE ASTRAGAL
39	-	2	#8 X 1/2" OH. SMS. - KEEPER INST. SCREW	STEEL	FEMALE ASTRAGAL
40	-	8/PANEL	#10 X 1" PH. SMS. - PANEL ASSEMBLY SCREW	STEEL	PANEL CORNERS
41	-	(2/CLIP)	#14 X 1-1/4" PH. SMS. - FIXED PANEL CLIP	STEEL	TOP/BOTTOM CLIPS/STILES
42	-	1/CLIP	#14 X 1-1/2" PH. SMS. -TOP FIXED CLIP	STEEL	HEAD TOP INTERLOCK
45	-	AS REQD.	1 1/2 x 2 x 1/8 REINF. TUBE, SEE SHEET 2 FOR LENGTHS	ALUMINUM	-
48	-	6	#14 x 1" PH. SMS.	STEEL	AT 50" O.C.
49	-	AS REQD.	2x4x1/8" THK. REINFORCING TUBE, FULL LENGTH	HR STEEL	MAJOR INTERLOCK/ASTRAGAL
50	-	AS REQ'D	SILICONE CAP (DOW 995)	SILICONE	FRAME/HEAD RECEPTOR
51	-	2/LATCH	#10 X 2" OH. MS. - ASSEMBLY SCREW	STEEL	LATCH ASSEMBLY
53	-	4/CHANNEL	#14 X 1-1/2" PH. SMS.	STEEL	AT HEAD ALUM. CHANNEL
54	-	1/INTERLOCK	3/8"x6" LG. HH. MS. SECURITY PIN	STEEL	AT INTERLOCK (INTERIOR)



PANEL TOP CORNER



PANEL BOTTOM CORNER

Engr: DR. HUMAYOON FAROOQ
STRUCTURES
FLA. PE # 16657
C.A.N. 3538

MAR 29 2007

PRODUCT REVISED
as complying with the Florida
Building Code
Acceptance No 06-1016.01
Expiration Date 01/23/2013

by *[Signature]*
Miami Dade Product Control
Division

afC
AL-FAROOQ CORPORATION
ENGINEERS & PRODUCT DEVELOPMENT
1235 S.W. 87 AVE
MIAMI, FLORIDA 33174
TEL. (305) 264-8100 FAX. (305) 262-6978
COMP-ANL\W02-115TMW

SERIES-350 ALUM. SLIDING GLASS DOOR (N.I.)
TM WINDOW AND DOOR
601 N.W. 12TH AVE.
POMPANO BEACH, FL. 33069
TEL. (954) 781-4430 FAX. (954) 781-5078

revisions:	no	date	by	description
	A	07.14.06		UPDATED FOR 2004 FBC
	B	03.16.07		REV. PER BCCO COMMENTS

date: 12-02-02
scale: 1/2" = 1"
dr. by: HAMID
chk. by:

drawing no.
W02-115
sheet 7 of 7