



MIAMI-DADE COUNTY, FLORIDA
METRO-DADE FLAGLER BUILDING
140 WEST FLAGLER STREET, SUITE 1603
MIAMI, FLORIDA 33130-1563
(305) 375-2901 FAX (305) 372-6339
www.miamidade.gov/buildingcode

**BUILDING CODE COMPLIANCE OFFICE (BCCO)
PRODUCT CONTROL DIVISION
NOTICE OF ACCEPTANCE (NOA)**

**T. M. Window & Door, LLC.
601 N. W. 12th Avenue
Pompano Beach, FL 33069**

SCOPE:

This NOA is being issued under the applicable rules and regulations governing the use of construction materials. The documentation submitted has been reviewed by Miami-Dade County Product Control Division and accepted by the Board of Rules and Appeals (BORA) to be used in Miami Dade County and other areas where allowed by the Authority Having Jurisdiction (AHJ).

This NOA shall not be valid after the expiration date stated below. The Miami-Dade County Product Control Division (In Miami Dade County) and/or the AHJ (in areas other than Miami Dade County) reserve the right to have this product or material tested for quality assurance purposes. If this product or material fails to perform in the accepted manner, the manufacturer will incur the expense of such testing and the AHJ may immediately revoke, modify, or suspend the use of such product or material within their jurisdiction. BORA reserves the right to revoke this acceptance, if it is determined by Miami-Dade County Product Control Division that this product or material fails to meet the requirements of the applicable building code.

This product is approved as described herein, and has been designed to comply with the Florida Building Code, including the High Velocity Hurricane Zone.

DESCRIPTION: Series "747 High Performance" Aluminum Single Hung Window - L.M.I.

APPROVAL DOCUMENT: Drawing No. **W07-25**, titled "Series 747 HP Alum. Single Hung Wdw. (L.M.I.)", sheets 1 through 5 of 5, dated 03/30/07 with revision A dated 01/08/08, prepared by Al-Farooq Corporation, signed and sealed by Yiping Wang, P.E., bearing the Miami-Dade County Product Control Approval stamp with the Notice of Acceptance number and Approval date by the Miami-Dade County Product Control Division.

MISSILE IMPACT RATING: Large and Small Missile Impact Resistant

LABELING: Each unit shall bear a permanent label with the manufacturer's name or logo, city, state and following statement: "Miami-Dade County Product Control Approved", unless otherwise noted herein.

RENEWAL of this NOA shall be considered after a renewal application has been filed and there has been no change in the applicable building code negatively affecting the performance of this product.

TERMINATION of this NOA will occur after the expiration date or if there has been a revision or change in the materials, use, and/or manufacture of the product or process. Misuse of this NOA as an endorsement of any product, for sales, advertising or any other purposes shall automatically terminate this NOA. Failure to comply with any section of this NOA shall be cause for termination and removal of NOA.

ADVERTISEMENT: The NOA number preceded by the words Miami-Dade County, Florida, and followed by the expiration date may be displayed in advertising literature. If any portion of the NOA is displayed, then it shall be done in its entirety.

INSPECTION: A copy of this entire NOA shall be provided to the user by the manufacturer or its distributors and shall be available for inspection at the job site at the request of the Building Official.

This NOA consists of this page 1 and evidence pages E-1 and E-2, as well as approval document mentioned above.

The submitted documentation was reviewed by **Manuel Perez, P.E.**



NOA No. 07-0612.06
Expiration Date: March 06, 2013
Approval Date: March 06, 2008
Page 1

T. M. Window & Door, LLC.

NOTICE OF ACCEPTANCE: EVIDENCE SUBMITTED

A. DRAWINGS

1. Manufacturer's die drawings and sections.
2. Drawing No **W07-25**, titled "Series 747 HP Alum. Single Hung Wdw. (L.M.I.)", sheets 1 through 5 of 5, dated 03/30/07 with revision A dated 01/08/08, prepared by Al-Farooq Corporation, signed and sealed by Yiping Wang, P.E.

B. TESTS

1. Test reports on:
 - 1) Air Infiltration Test, per FBC, TAS 202-94
 - 2) Uniform Static Air Pressure Test, Loading per FBC TAS 202-94
 - 3) Water Resistance Test, per FBC, TAS 202-94
 - 4) Large Missile Impact Test per FBC, TAS 201-94
 - 5) Cyclic Wind Pressure Loading per FBC, TAS 203-94
 - 6) Forced Entry Test, per FBC 2411 3.2.1, TAS 202-94Along with marked-up drawings and installation diagram of a series 747 aluminum single hung window, prepared by Fenestration Testing Laboratory, Inc., Test Report No. **FTL-4974**, dated 01/02/07, signed and sealed by Michael Wenzel, P.E.
2. Test reports on:
 - 1) Uniform Static Air Pressure Test, Loading per FBC TAS 202-94
 - 2) Large Missile Impact Test per FBC, TAS 201-94
 - 3) Cyclic Wind Pressure Loading per FBC, TAS 203-94Along with marked-up drawings and installation diagram of a series 747 aluminum single hung window, prepared by Fenestration Testing Laboratory, Inc., Test Report No. **FTL-5143**, dated 03/06/07, signed and sealed by Michael Wenzel, P.E.

C. CALCULATIONS

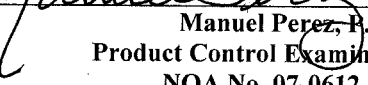
1. Anchor verification calculations and structural analysis, complying with FBC-2004, prepared by Al-Farooq Corporation, dated 04/11/07, signed and sealed by Humayoun Farooq, P.E.
Complies with ASTM E1300-02

D. QUALITY ASSURANCE

1. Miami Dade Building Code Compliance Office (BCCO).

E. MATERIAL CERTIFICATIONS

1. Notice of Acceptance No. **07-1116.04** issued to E.I. DuPont DeNemours & CO., Inc. for "**DuPont Sentry Glass Plus**" dated January 03, 2008, expiring on January 14, 2012.
2. Notice of Acceptance No. **06-0216.06** issued to Solutia Inc. for their "**Saflex III Clear or colored interlayer**" dated 05/04/06, expiring on 05/21/11.
3. Notice of Acceptance No. **03-1117.05** issued to Cytec Industries, Inc. for their "**Uvekols - Liq. Resin to adhere Glass**" dated 01/29/2004, expiring on 02/08/2009.


Manuel Perez, P.E.
Product Control Examiner
NOA No. 07-0612.06
Expiration Date: March 06, 2013
Approval Date: March 06, 2008

T. M. Window & Door, LLC.

NOTICE OF ACCEPTANCE: EVIDENCE SUBMITTED

E. MATERIAL CERTIFICATIONS (Continued)

4. Notice of Acceptance No. **03-0415.13** issued to Solutia Inc. for their “**Vanceva Composites used for lamination of glass**” dated December 11, 2003, expiring on December 11, 2008.

F. STATEMENTS

1. Statement letter of conformance, dated April 11, 2007, signed and sealed by Humayoun Farooq, P.E.
2. Statement letter of no financial interest, dated April 11, 2007, signed and sealed by Humayoun Farooq, P.E.
3. Laboratory compliance letter for Test Report no. **FTL-4974**, issued by Fenestration Testing Laboratory, Inc., dated March 07, 2007, signed and sealed by Michael Wenzel, P.E.
4. Laboratory compliance letter for Test Report no. **FTL-5143**, issued by Fenestration Testing Laboratory, Inc., dated March 22, 2007, signed and sealed by Michael Wenzel, P.E.

G. OTHER

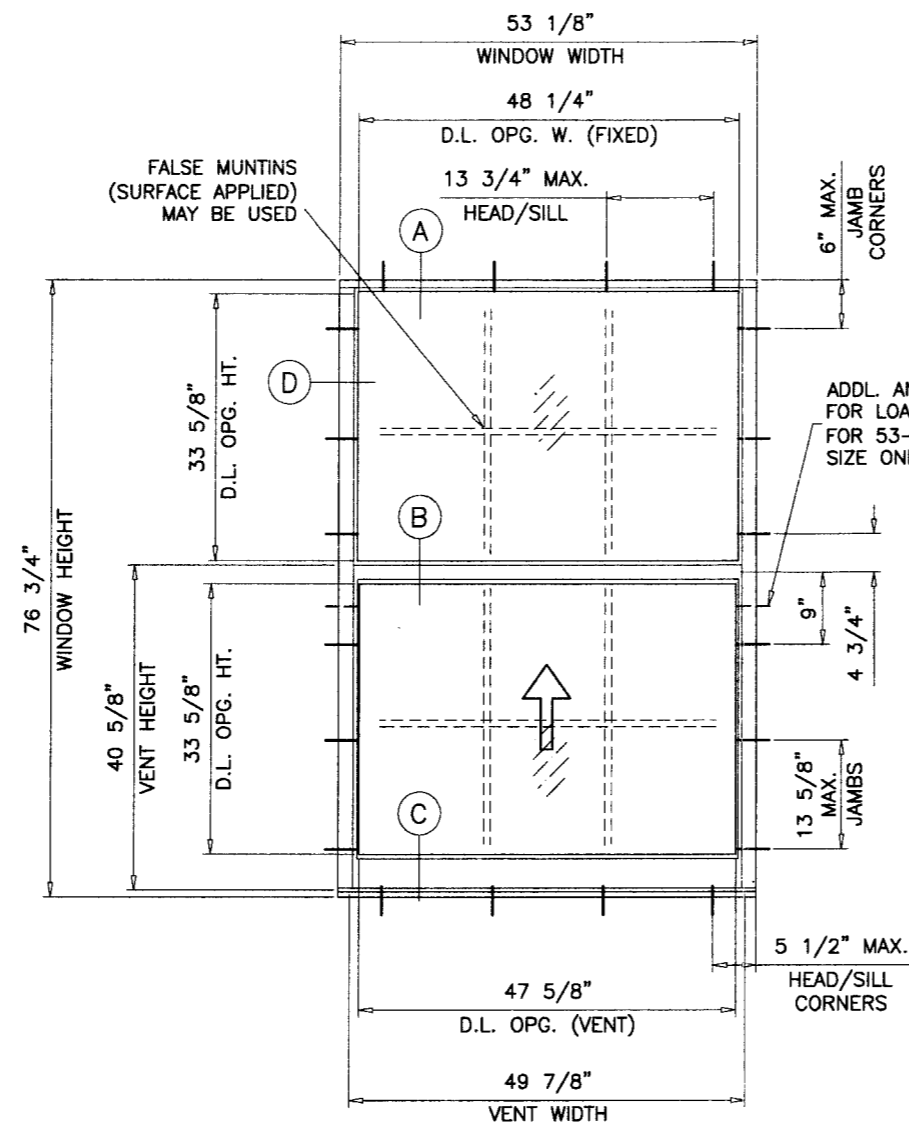
1. None.


Manuel Perez, P.E.
Product Control Examiner

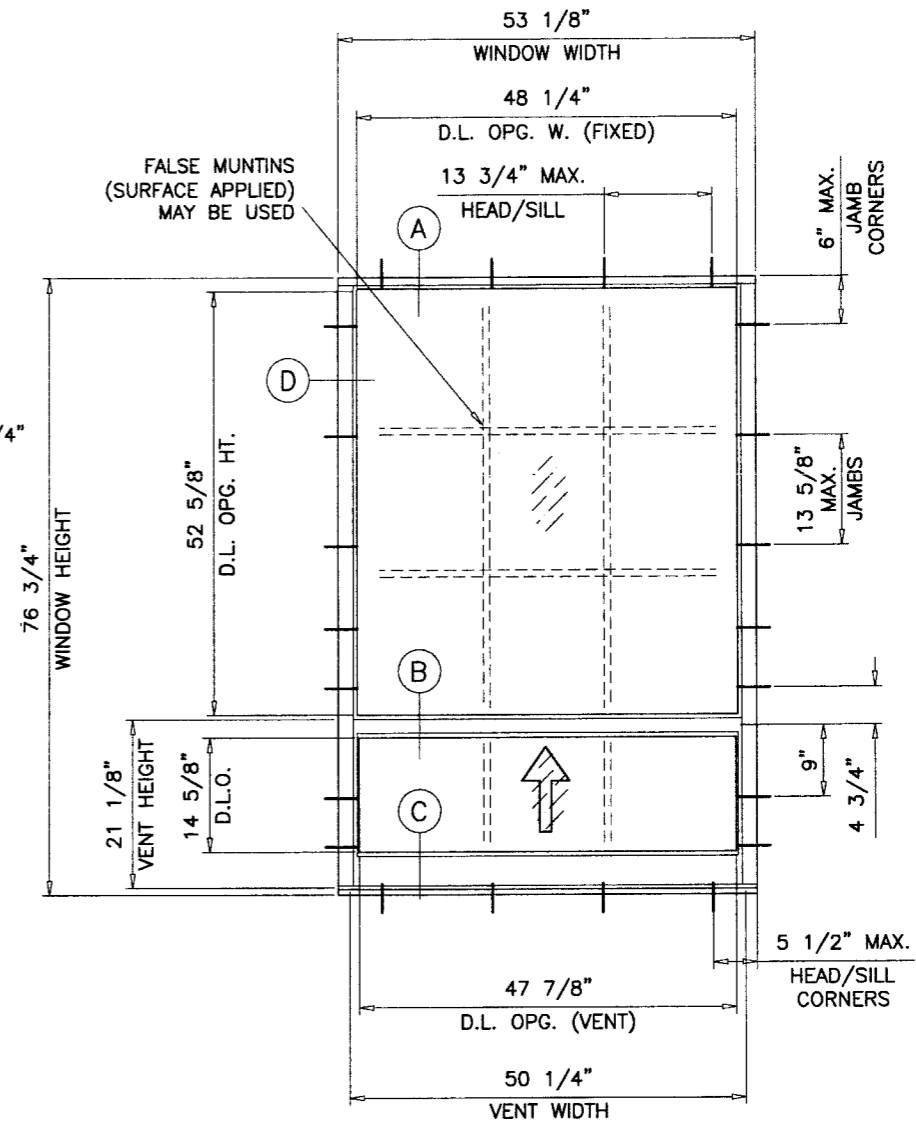
NOA No. 07-0612.06

Expiration Date: March 06, 2013

Approval Date: March 06, 2008



TYPICAL ELEVATION
EQUAL LITES



TYPICAL ELEVATION
UNEQUAL LITES

THESE WINDOWS ARE RATED FOR LARGE MISSILE IMPACT.
SHUTTERS ARE NOT REQUIRED.

**SERIES 747 HIGH PERFORMANCE
ALUMINUM SINGLE HUNG WINDOW**

DESIGN LOAD RATINGS FOR THESE WINDOWS TO BE AS PER
CHARTS SHOWN ON SHEET 2.

APPROVAL APPLIES TO SINGLE UNITS OR SIDE BY SIDE
COMBINATIONS OF S.H./S.H. OR SINGLE HUNG WITH OTHER
WINDOW TYPES IN MODULES OF TWO OR MORE WINDOWS USING
MIAMI-DADE COUNTY APPROVED MULLIONS IN BETWEEN.
LOWER DESIGN PRESSURE FROM WINDOWS OR MULLION APPROVAL
WILL APPLY TO ENTIRE SYSTEM.

THIS PRODUCT HAS BEEN DESIGNED AND TESTED TO COMPLY WITH THE
REQUIREMENTS OF THE FLORIDA BUILDING CODE 2004 EDITION INCLUDING
HIGH VELOCITY HURRICANE ZONE (HVHZ).

WOOD BUCKS BY OTHERS, MUST BE ANCHORED PROPERLY TO TRANSFER
LOADS TO THE STRUCTURE.

ANCHORS SHALL BE AS LISTED, SPACED AS SHOWN ON DETAILS, ANCHORS
EMBEDMENT TO BASE MATERIAL SHALL BE BEYOND WALL DRESSING OR STUCCO.

ANCHORING OR LOADING CONDITIONS NOT SHOWN IN THESE DETAILS
ARE NOT PART OF THIS APPROVAL.

A LOAD DURATION INCREASE IN ALLOWABLE STRESS IS USED IN DESIGN OF
ANCHORS INTO WOOD ONLY.

MATERIALS INCLUDING BUT NOT LIMITED TO STEEL/METAL SCREWS, THAT COME INTO
CONTACT WITH OTHER DISSIMILAR MATERIALS SHALL MEET THE REQUIREMENTS
OF 2004 FLORIDA BLDG. CODE SECTION 2003.8.4.

LAMINATED GLASS
LARGE MISSILE IMPACT

Engr: YIPING WANG
STRUCTURES
FLA. PE # 55983
C.A.N. 3538

JAN 10 2008

Approved as complying with the
Florida Building Code
Date 03/06/2008
NOA# 07-0612.06
Miami Dade Product Control!
Division
By *Manuel Perez*



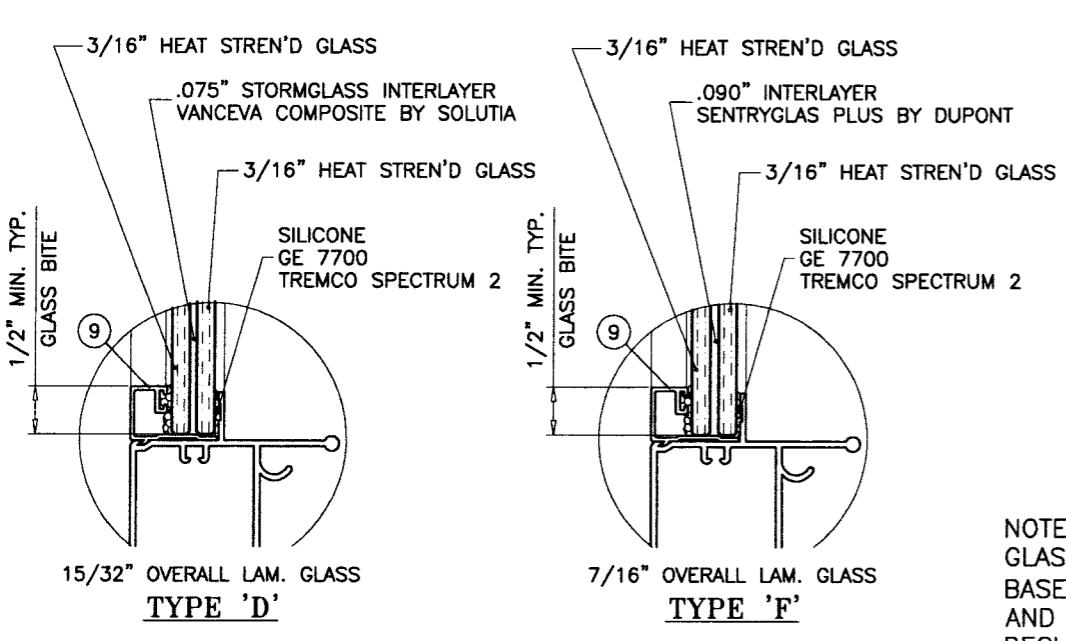
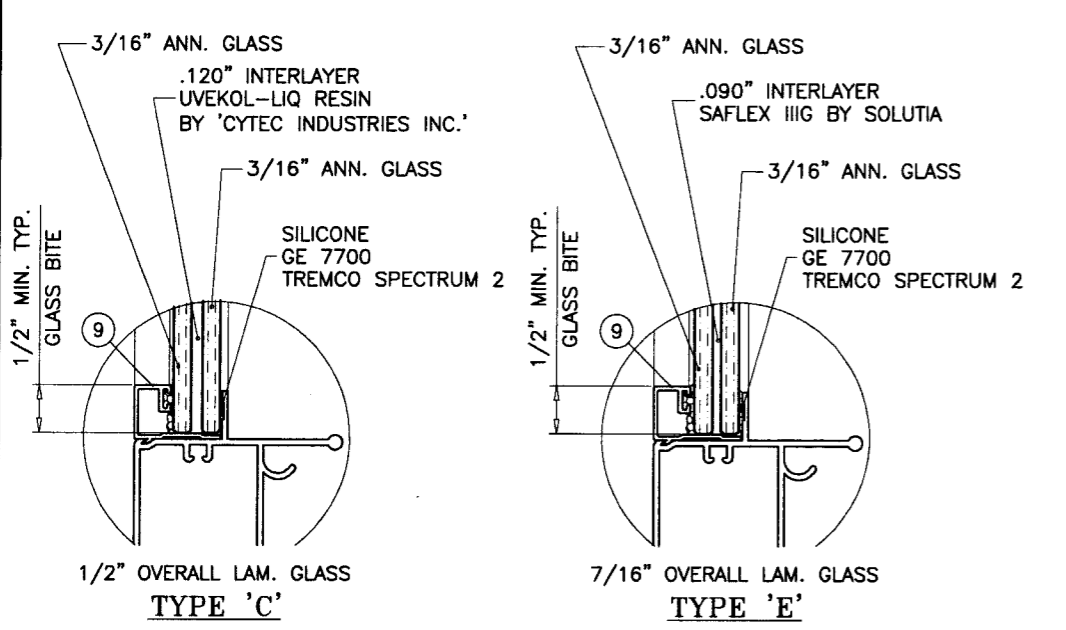
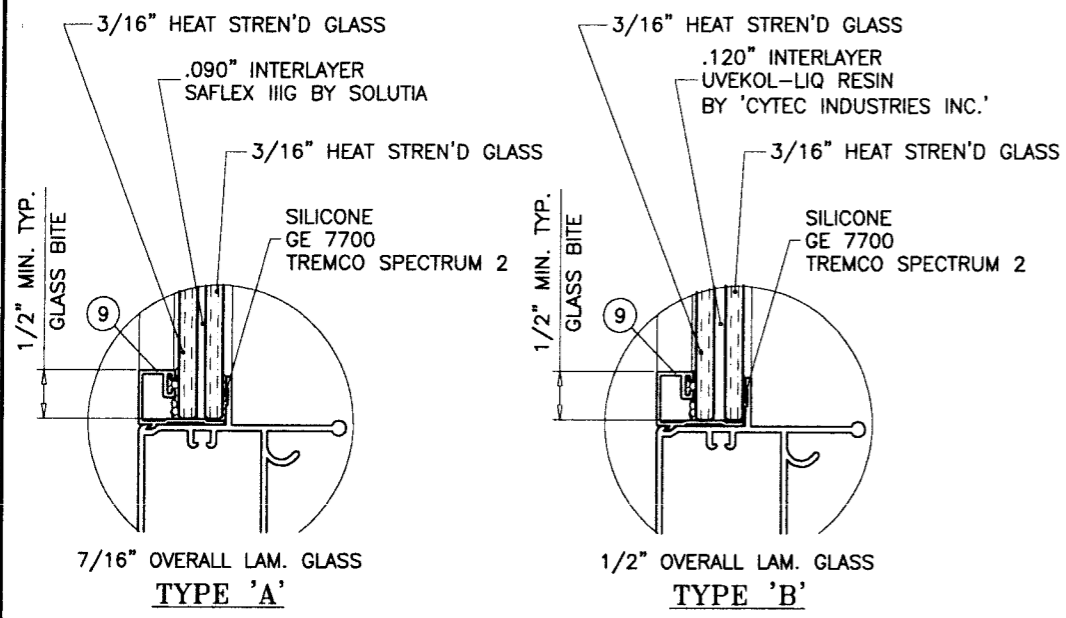
AL-FAROOQ CORPORATION
ENGINEERS & PRODUCT DEVELOPMENT
1235 S.W. 87 AVE
MIAMI, FLORIDA 33174
TEL. (305) 264-8100 FAX. (305) 262-6978
COMP-ANL\W07-25TMW

SERIES 747 HP ALUM SINGLE HUNG WDW. (L.M.I.)
TM WINDOW AND DOOR
601 N.W. 12TH AVE.
POMPANO BEACH, FL. 33069
TEL. (954) 781-4430 FAX. (954) 781-5078

revisions:	no	date	by	description
	A	01.08.08		REV. PER BCCO COMMENTS

date: 03-30-07
scale: 1/2"=1'-0"
dr. by: HAMID
chk. by:

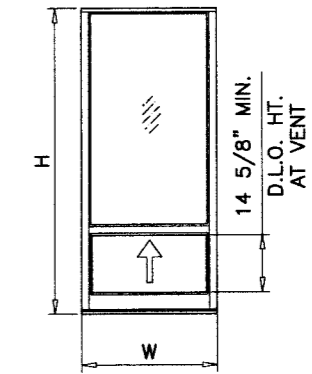
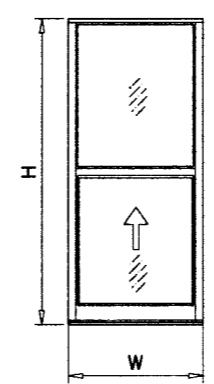
drawing no.
W07-25
sheet 1 of 5



GLAZING OPTIONS

EQUAL LITES WINDOWS DESIGN LOAD CAPACITY - PSF							
WINDOW DIMS.		GLASS TYPES 'A' & 'B'		GLASS TYPES 'C' & 'E'		GLASS TYPE 'D'	
WIDTH	HEIGHT	EXT.(+)	INT.(-)	EXT.(+)	INT.(-)	EXT.(+)	INT.(-)
19-1/8"	26"	90.0	90.0	80.0	80.0	90.0	130.0
26-1/2"		90.0	90.0	80.0	80.0	90.0	130.0
37"		90.0	90.0	80.0	80.0	90.0	130.0
53-1/8"		90.0	90.0	80.0	80.0	90.0	130.0
19-1/8"	38-3/8"	90.0	90.0	80.0	80.0	90.0	130.0
26-1/2"		90.0	90.0	80.0	80.0	90.0	130.0
37"		90.0	90.0	80.0	80.0	90.0	130.0
53-1/8"		90.0	90.0	80.0	80.0	90.0	130.0
19-1/8"	50-5/8"	90.0	90.0	80.0	80.0	90.0	130.0
26-1/2"		90.0	90.0	80.0	80.0	90.0	130.0
37"		90.0	90.0	80.0	80.0	90.0	130.0
53-1/8"		90.0	90.0	80.0	80.0	90.0	130.0
19-1/8"	56-5/8"	90.0	90.0	80.0	80.0	90.0	130.0
26-1/2"		90.0	90.0	80.0	80.0	90.0	130.0
37"		90.0	90.0	80.0	80.0	90.0	130.0
53-1/8"		90.0	90.0	80.0	80.0	90.0	130.0
19-1/8"	63"	90.0	90.0	80.0	80.0	90.0	130.0
26-1/2"		90.0	90.0	80.0	80.0	90.0	130.0
37"		90.0	90.0	80.0	80.0	90.0	130.0
53-1/8"		90.0	90.0	80.0	80.0	90.0	130.0
19-1/8"	76-3/4"	90.0	90.0	80.0	80.0	90.0	130.0
26-1/2"		90.0	90.0	80.0	80.0	90.0	130.0
37"		90.0	90.0	80.0	80.0	90.0	130.0
53-1/8"		90.0	90.0	80.0	80.0	90.0	130.0
24"	48"	90.0	90.0	80.0	80.0	90.0	130.0
30"		90.0	90.0	80.0	80.0	90.0	130.0
36"		90.0	90.0	80.0	80.0	90.0	130.0
42"		90.0	90.0	80.0	80.0	90.0	130.0
48"		90.0	90.0	80.0	80.0	90.0	130.0
54"		90.0	90.0	80.0	80.0	90.0	130.0
24"	60"	90.0	90.0	80.0	80.0	90.0	130.0
30"		90.0	90.0	80.0	80.0	90.0	130.0
36"		90.0	90.0	80.0	80.0	90.0	130.0
42"		90.0	90.0	80.0	80.0	90.0	130.0
48"		90.0	90.0	80.0	80.0	90.0	130.0
54"		90.0	90.0	80.0	80.0	90.0	130.0
24"	72"	90.0	90.0	80.0	80.0	90.0	130.0
30"		90.0	90.0	80.0	80.0	90.0	130.0
36"		90.0	90.0	80.0	80.0	90.0	130.0
42"		90.0	90.0	80.0	80.0	90.0	130.0
48"		90.0	90.0	80.0	80.0	90.0	130.0
54"		90.0	90.0	80.0	80.0	90.0	130.0
24"	72"	90.0	90.0	80.0	80.0	90.0	130.0
30"		90.0	90.0	80.0	80.0	90.0	130.0
36"		90.0	90.0	80.0	80.0	90.0	130.0
42"		90.0	90.0	80.0	80.0	90.0	130.0
48"		90.0	90.0	80.0	80.0	90.0	130.0
54"		88.2	90.0	78.4	78.4	88.2	120.9

UNEQUAL LITES (ORIEL TYPES) WINDOWS DESIGN LOAD CAPACITY - PSF							
WINDOW DIMS.		GLASS TYPES 'A' & 'B'		GLASS TYPES 'C' & 'E'		GLASS TYPE 'F'	
WIDTH	HEIGHT	EXT.(+)	INT.(-)	EXT.(+)	INT.(-)	EXT.(+)	INT.(-)
19-1/8"	50-5/8"	90.0	90.0	80.0	80.0	90.0	130.0
26-1/2"		90.0	90.0	80.0	80.0	90.0	130.0
37"		90.0	90.0	80.0	80.0	90.0	130.0
53-1/8"		90.0	90.0	80.0	80.0	90.0	130.0
19-1/8"	56-5/8"	90.0	90.0	80.0	80.0	90.0	130.0
26-1/2"		90.0	90.0	80.0	80.0	90.0	130.0
37"		90.0	90.0	80.0	80.0	90.0	130.0
53-1/8"		90.0	90.0	80.0	80.0	90.0	130.0
19-1/8"	63"	90.0	90.0	80.0	80.0	90.0	130.0
26-1/2"		90.0	90.0	80.0	80.0	90.0	130.0
37"		90.0	90.0	80.0	80.0	90.0	130.0
53-1/8"		90.0	90.0	-	-	90.0	130.0
19-1/8"	76-3/4"	90.0	90.0	80.0	80.0	90.0	130.0
26-1/2"		90.0	90.0	80.0	80.0	90.0	130.0
37"		90.0	90.0	-	-	90.0	130.0
53-1/8"		90.0	90.0	-	-	90.0	130.0
24"	48"	90.0	90.0	80.0	80.0	90.0	130.0
30"		90.0	90.0	80.0	80.0	90.0	130.0
36"		90.0	90.0	80.0	80.0	90.0	130.0
42"		90.0	90.0	80.0	80.0	90.0	130.0
48"		90.0	90.0	80.0	80.0	90.0	130.0
54"		90.0	90.0	80.0	80.0	90.0	130.0
24"	60"	90.0	90.0	80.0	80.0	90.0	130.0
30"		90.0	90.0	80.0	80.0	90.0	130.0
36"		90.0	90.0	80.0	80.0	90.0	130.0
42"		90.0	90.0	80.0	80.0	90.0	130.0
48"		90.0	90.0	80.0	80.0	90.0	130.0
54"		89.1	90.0	-	-	89.1	128.7
24"	72"	90.0	90.0	80.0	80.0	90.0	130.0
30"		90.0	90.0	80.0	80.0	90.0	130.0
36"		90.0	90.0	80.0	80.0	90.0	130.0
42"		90.0	90.0	-	-	90.0	130.0
48"		90.0	90.0	-	-	90.0	130.0
54"		84.8	90.0	-	-	84.8	122.5



Engr: YIPING WANG
STRUCTURES
FLA. PE # 55983
C.A.N. 3538

Yiping Wang
JAN 10 2008

Approved as complying with the
Florida Building Code
Date 03/06/2008
NOA# 07-0612-06
Miami Dade Product Control
Division
By *Mauricio Perez*

AL-FAROOQ CORPORATION
ENGINEERS & PRODUCT DEVELOPMENT
1235 S.W. 87 AVE
MIAMI, FLORIDA 33174
TEL. (305) 264-8100 FAX. (305) 262-6978
COMP-ANL\W07-25TMW

SERIES 747 HP ALUM SINGLE HUNG WDW. (L.M.I.)

TM WINDOW AND DOOR
601 N.W. 12TH AVE.
POMPANO BEACH, FL. 33069
TEL. (954) 781-4430 FAX. (954) 781-5078

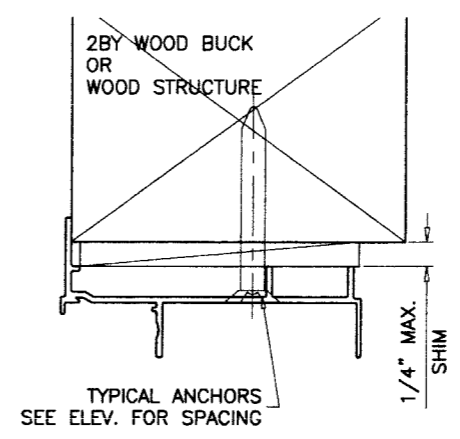
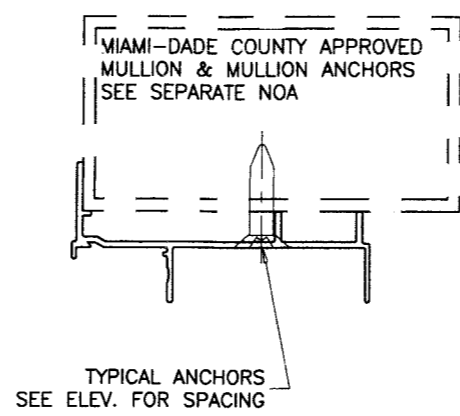
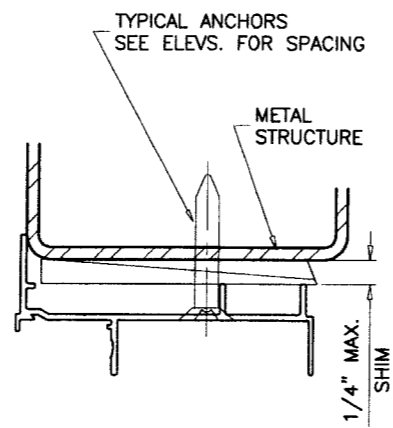
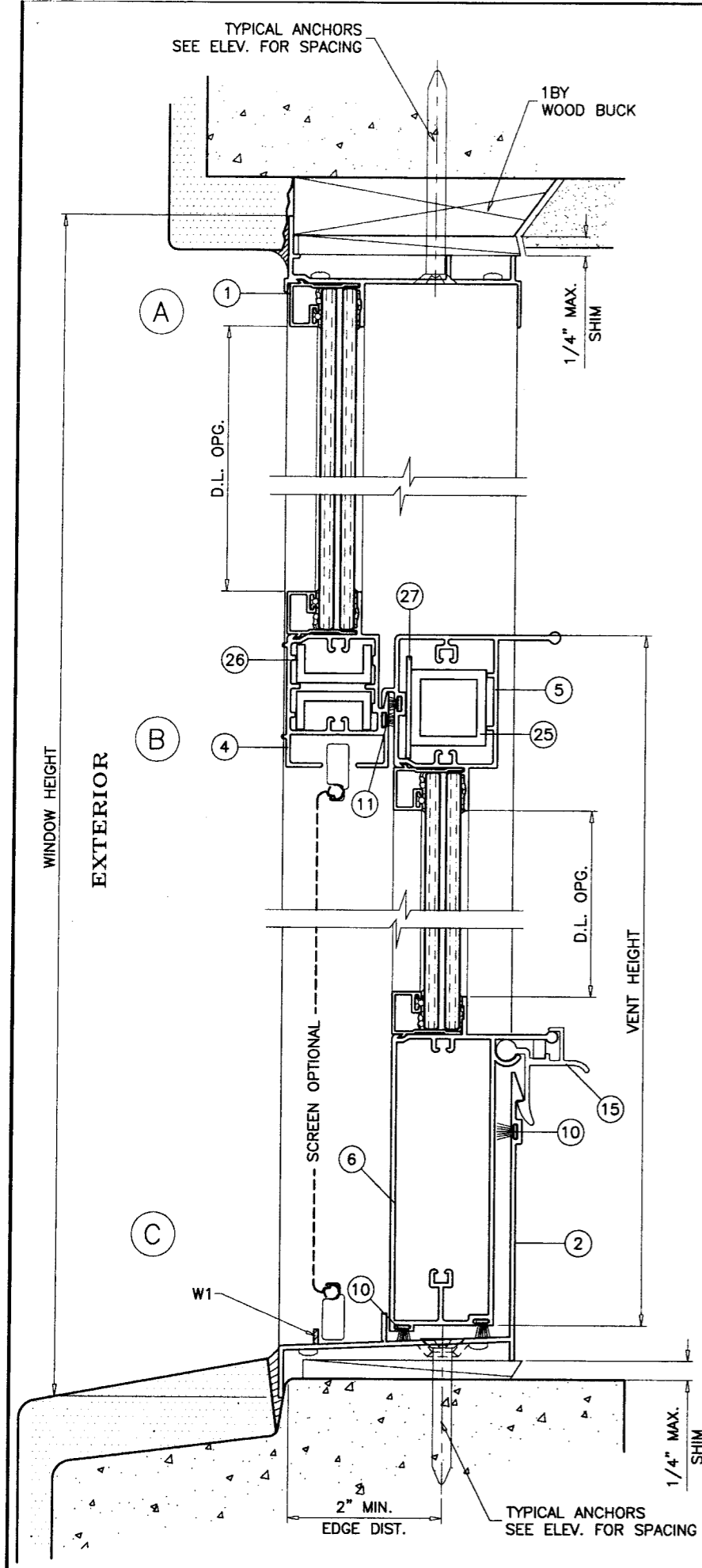
revisions:

no.	date	by	description
A	01.08.08		REV. PER BCCO COMMENTS

date: 03-30-07
scale: 1/2" = 1"
dr. by: HAMID
chk. by:

drawing no. **W07-25**
sheet 2 of 5

NOTE:
GLASS CAPACITIES ON THIS SHEET ARE
BASED ON ASTM E1300-02 (3 SEC. GUSTS)
AND FLORIDA BUILDING COMMISSION
DECLARATORY STATEMENT DCA05-DEC-219



TYPICAL ANCHORS: SEE ELEV. FOR SPACING

1/4" TAPCONS BY 'ELCO'
 INTO 2BY WOOD BUCKS OR WOOD STRUCTURES
 1-3/8" MIN. PENETRATION INTO WOOD
 THRU 1BY BUCKS INTO CONC. OR MASONRY
 1-1/4" MIN. EMBED INTO CONC. OR MASONRY
 DIRECTLY INTO CONC. OR MASONRY
 1-1/4" MIN. EMBED INTO CONC. OR MASONRY

#14 SMS OR SELF DRILLING SCREWS
 INTO METAL STRUCTURES
 STEEL : 12 GA. MIN. (Fy = 36 KSI MIN.)
 ALUMINUM : 1/8" THK. MIN. (6063-T5 MIN.)
 (STEEL IN CONTACT WITH ALUMINUM TO BE PLATED OR PAINTED)

#12 SMS OR SELF DRILLING SCREWS
 INTO DADE COUNTY APPROVED MULLIONS (MIN. THK. = .090")
 (NO SHIM SPACE)

TYPICAL EDGE DISTANCE
 INTO CONCRETE AND MASONRY = 2" MIN.
 INTO WOOD STRUCTURE = 1" MIN.
 INTO METAL STRUCTURE = 1/2" MIN.

SEALANTS:
 ALL JOINTS AND FRAME CONNECTIONS SEALED WITH SILICONE OR ACRYLIC SEALANT.

WEEPHOLES:
 W1 = 7/8" LONG NOTCH AT EACH END

WOOD BUCKS AND METAL STRUCTURE NOT BY TM WINDOWS
 MUST SUSTAIN LOADS IMPOSED BY GLAZING SYSTEM
 AND TRANSFER THEM TO THE BUILDING STRUCTURE.

Engr: YIPING WANG
 STRUCTURES
 FLA. PE # 55983
 C.A.N. 3538

Yiping Wang
 JAN 10 2008

Approved as complying with the
 Florida Building Code
 Date 03/06/2008
 NOA# 07-0612-06
 Miami Dade Product Control
 Division
 By *Manuel Perez*

af c
AL-FAROOQ CORPORATION
 ENGINEERS & PRODUCT DEVELOPMENT
 1235 S.W. 87 AVE
 MIAMI, FLORIDA 33174
 TEL. (305) 264-8100 FAX. (305) 262-6978
 COMP-ANL\W07-25TMW

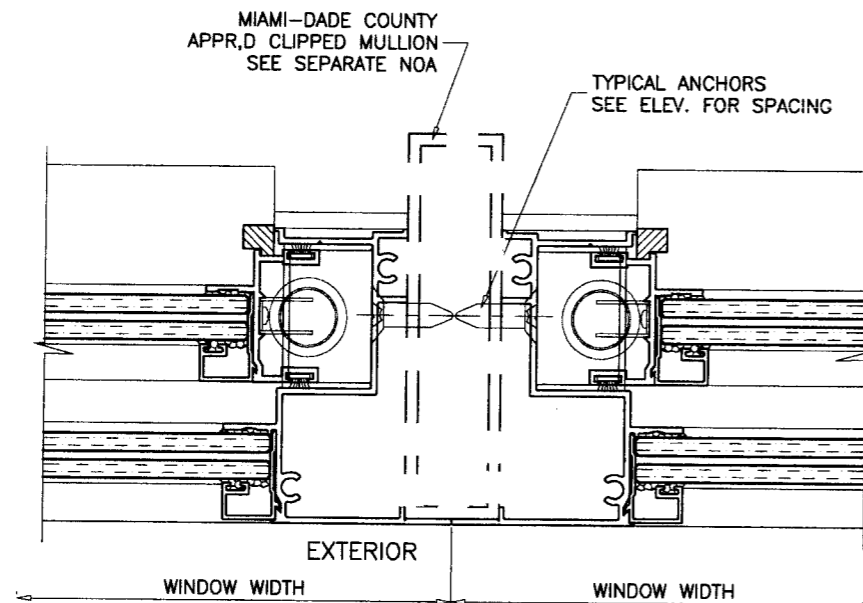
SERIES 747 HP ALUM SINGLE HUNG WDW. (L.M.I.)
TM WINDOW AND DOOR
 601 N.W. 12TH AVE.
 POMPANO BEACH, FL. 33069
 TEL. (954) 781-4430 FAX. (954) 781-5078

Revisions:

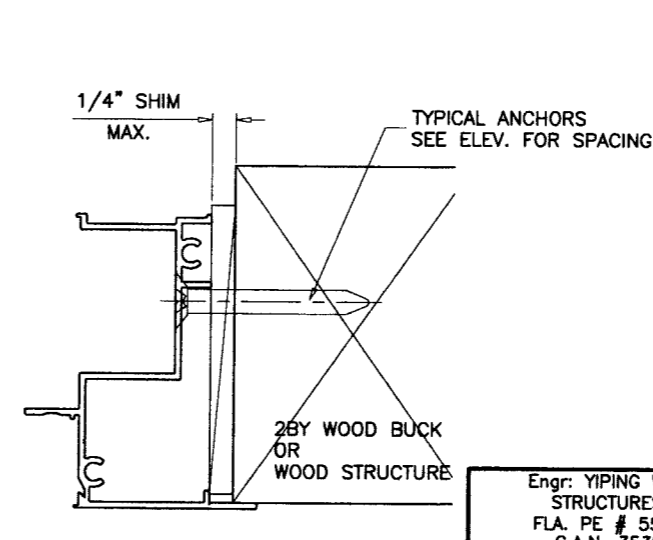
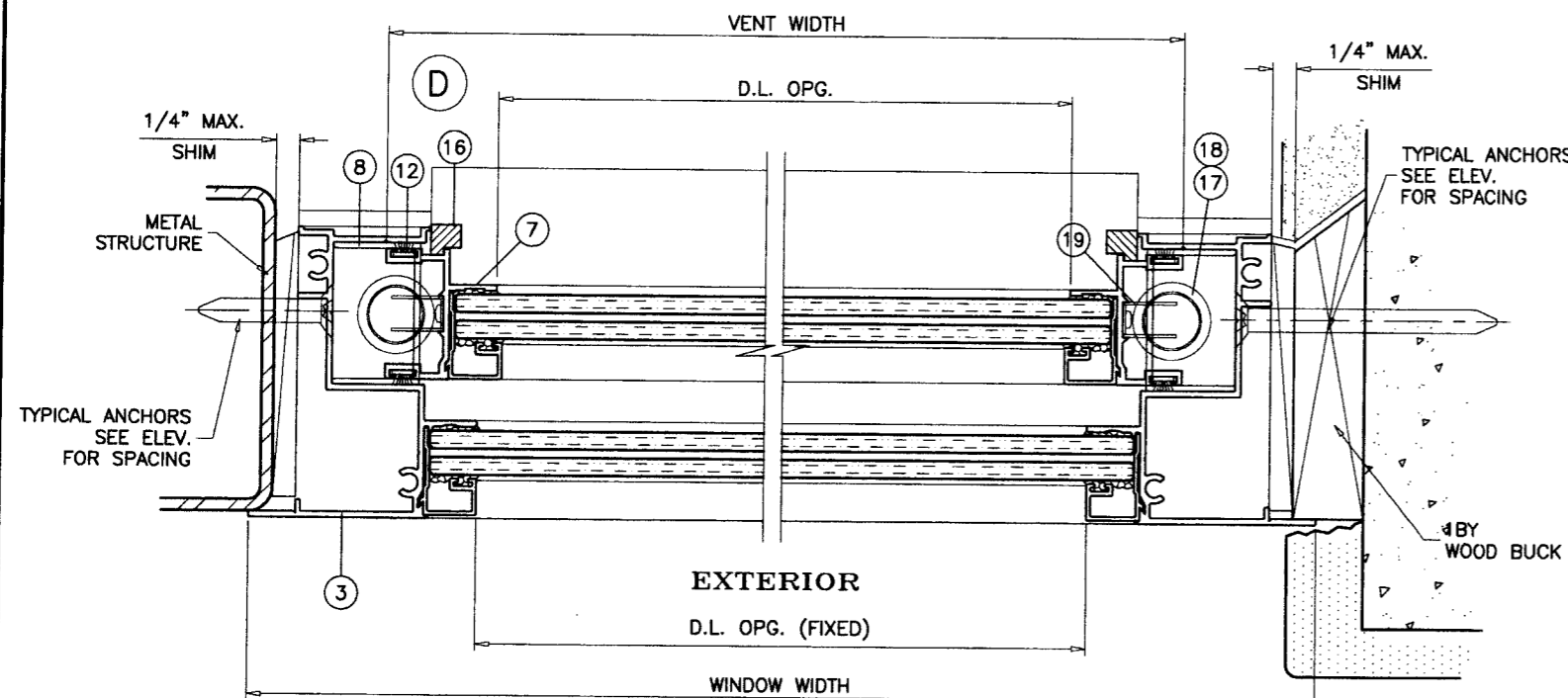
no	date	by	description
A	01.08.08		REV. PER BCCO COMMENTS

date: 03-30-07
 scale: 1/2" = 1"
 dr. by: HAMID
 chk. by:

drawing no.
W07-25
 sheet 3 of 5



ITEM	PART #	QTY.	DESCRIPTION	MATERIAL	MANF./SUPPLIER/REMARKS
1	TM-131A	1	FRAME HEAD	6063-T6	-
2	GW-37731	1	FRAME SILL	6063-T6	-
3	TM-130	2	FRAME JAMB	6063-T6	-
4	TM-137	1	MEETING RAIL	6063-T6	-
5	TM-140	1	VENT TOP RAIL	6063-T6	-
6	GW-37730	1	VENT BOTTOM RAIL	6063-T6	-
7	GW-31134	2	VENT JAMB STILE	6063-T6	-
8	GW-31470	2	VENT STOP	6063-T6	-
9	TM-141B	4/VENT	GLAZING BEAD	6063-T6	-
10	W43371	(2) STRIP	FIN SEAL WEATHERSTRIP	-	BOTTOM RAIL/FRAME SILL
11	W43201	(1) STRIP	FIN SEAL WEATHERSTRIP	-	VENT TOP/MTG.RAIL
12	W31225	(2) STRIP	FIN SEAL WEATHERSTRIP	-	VENT JAMB STILES
13	-	-	-	-	-
14	P5043	2	1 3/8"x7/8"x1/2" FINSEAL PAD	-	FRAME SILL CORNERS
15	TM-118A	2/VENT	SPRING LOADED EGRESS LOCK	6063-T6	VENT BOTT. RAIL, 6" FROM ENDS
16	-	4/VENT	VENT GUIDE	NYLON	VENT INT. CORNERS
17	-	2/VENT	CALDWELL SPIRAL BALANCES	-	AT FRAME JAMBS
18	WVR-9302	2/VENT	BALANCE COVER	VINYL	FRAME HEAD/JAMBS
19	N69	2/VENT	CALDWELL BALANCE CLIP	-	VENT BOTT. CORNERS
20	-	2	#12 x 3/4" P.H. SMS	STEEL	(1) AT EACH BALANCE
21	-	2/ CORNER	#12 x 1" P.H. SMS	STEEL	FRAME CORNERS & MTG. RAIL CORNERS
22	-	2/ CORNER	#10 x 1" P.H. SMS	STEEL	VENT CORNERS
23	-	-	-	-	-
24	-	4	#6 x 3/8" F.H. SMS.	STEEL	AT EA. PLASTIC GUIDE
25	-	2	1/2" X 1" X 1/8" REINF. CHANNEL	6063-T5	AT MTG. RAIL
26	-	1	1 X 1 X 1/8" REINF. TUBE	6063-T5	AT VENT TOP RAIL
27	-	1	1-3/8 X 1/16" REINF. BAR	6063-T5	AT VENT TOP RAIL



Engr: YIPING WANG
 STRUCTURES
 FLA. PE # 55983
 C.A.N. 3538

Yiping Wang
 JAN 10 2008

Approved as complying with the
 Florida Building Code
 Date: 03/06/2008
 NOA# 07-0612.06
 Miami Dade Product Control
 Division
 By: *Manuel Perez*

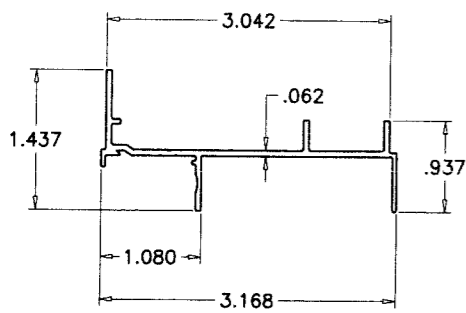
AL-FAROOQ CORPORATION
 ENGINEERS & PRODUCT DEVELOPMENT
 1235 S.W. 87 AVE
 MIAMI, FLORIDA 33174
 TEL. (305) 264-8100 FAX. (305) 262-6978
 COMP-ANL\W07-25TMW

SERIES 747 HP ALUM SINGLE HUNG WDW. (L.M.I.)
TM WINDOW AND DOOR
 601 N.W. 12TH AVE.
 POMPANO BEACH, FL. 33069
 TEL. (954) 781-4430 FAX. (954) 781-5078

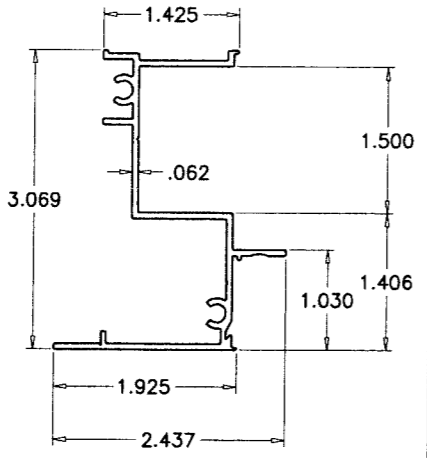
no	date	description
A	01.08.08	REV. PER BCCO COMMENTS

date:	03-30-07
scale:	1/2" = 1"
dr. by:	HAMID
chk. by:	

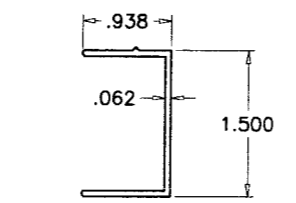
drawing no.	W07-25
sheet	4 of 5



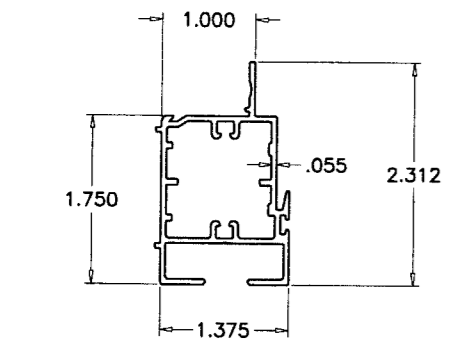
1 FRAME HEAD



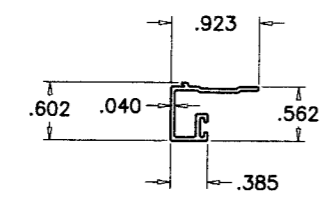
3 FRAME JAMB



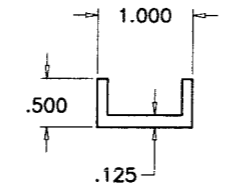
8 VENT STOP



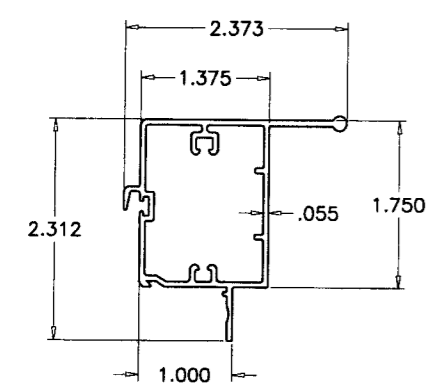
4 FIXED MEETING RAIL



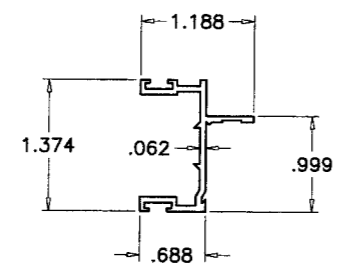
9 GLAZING BEAD



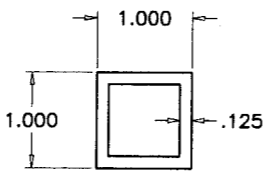
26 MTG. RAIL REINFORCING



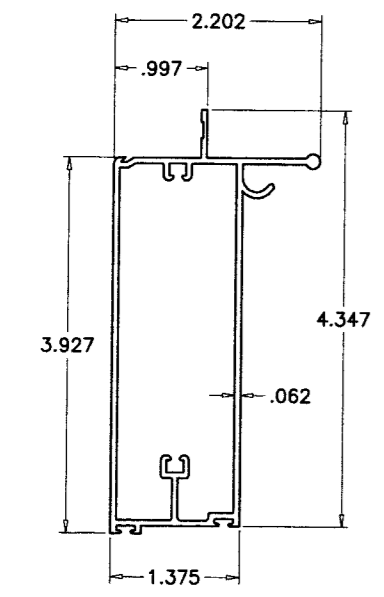
5 VENT TOP RAIL



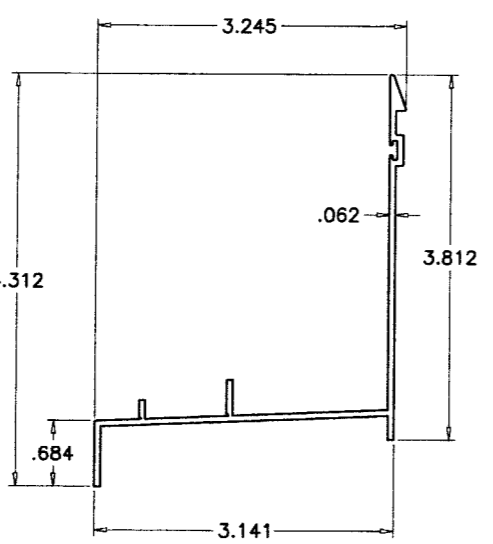
7 SASH SIDE RAIL



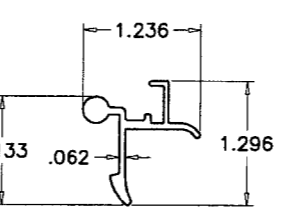
25 TOP RAIL REINFORCING



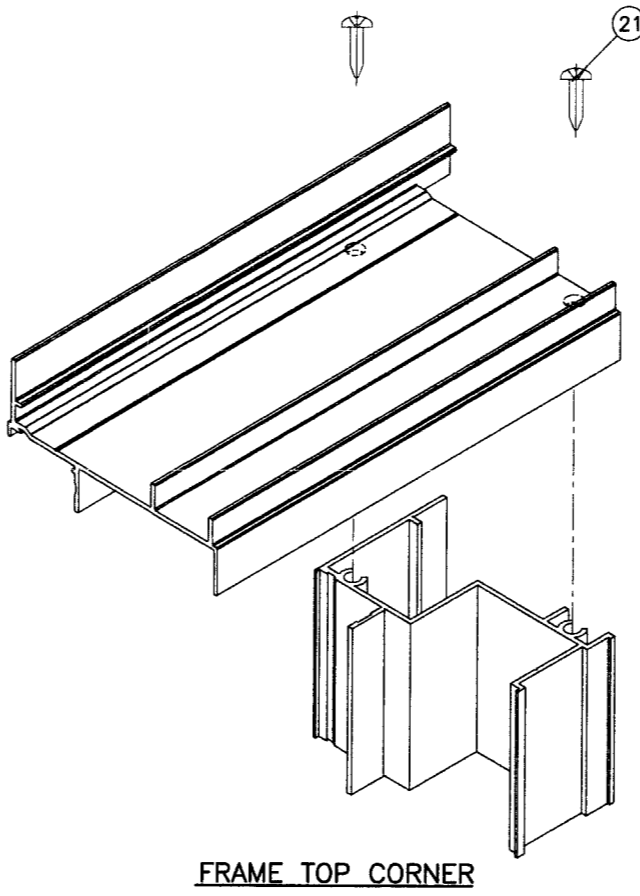
6 VENT BOTTOM RAIL



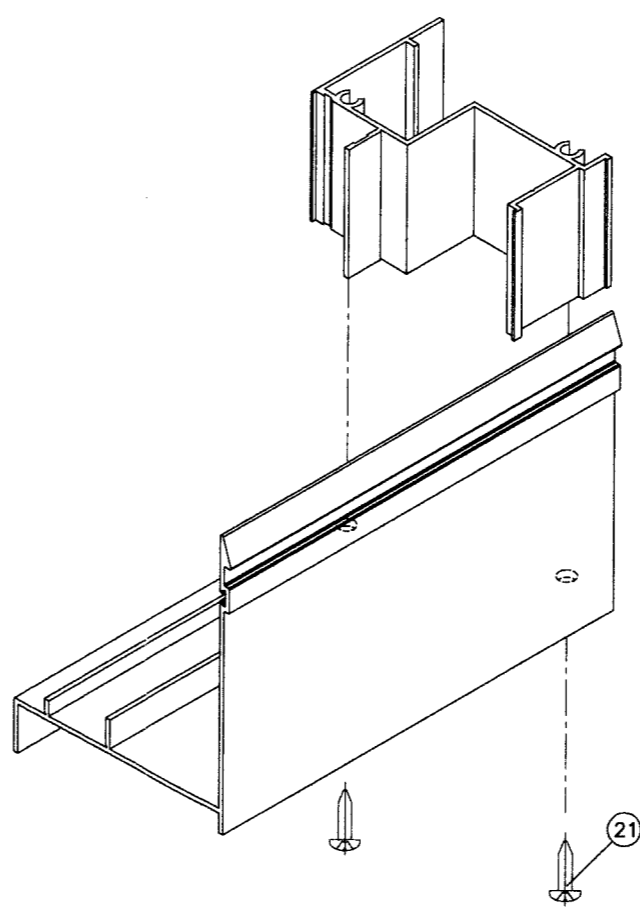
2 FRAME SILL



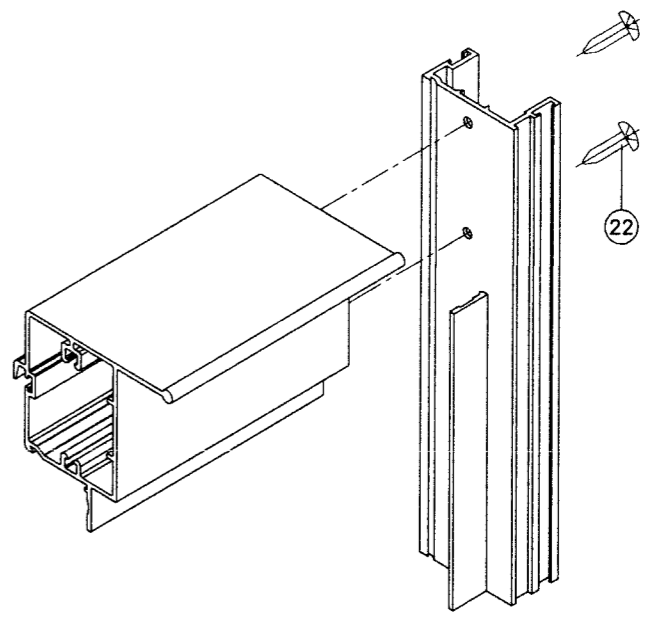
15A LATCH LOCK



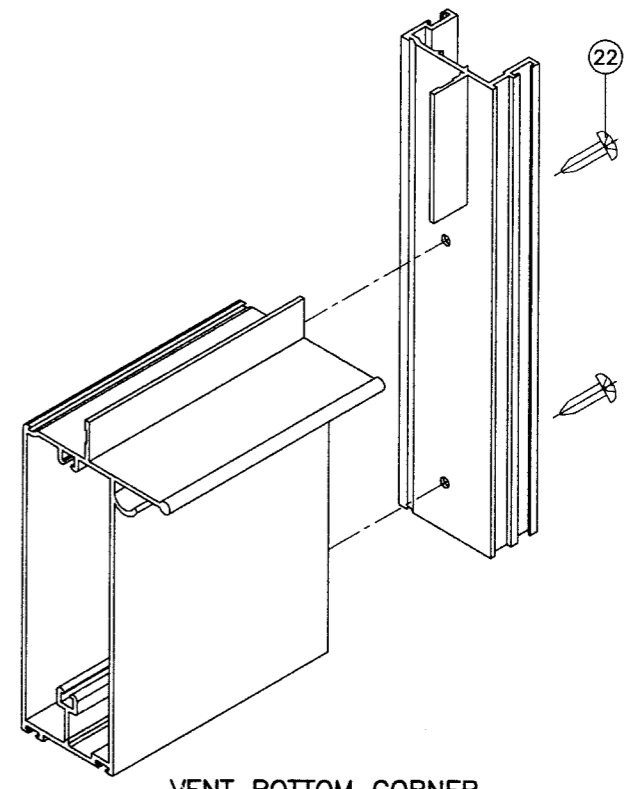
FRAME TOP CORNER



FRAME BOTTOM CORNER



VENT TOP CORNER



VENT BOTTOM CORNER

Engr: YIPING WANG
STRUCTURES
FLA. PE # 55983
C.A.N. 3538

JAN 10 2008

Approved as complying with the
Florida Building Code
Date 03/06/2008
NOA# 07-0612.06
Miami Dade Product Control
Division
By *Wahid Peraz*

afC
AL-FAROOQ CORPORATION
ENGINEERS & PRODUCT DEVELOPMENT
1235 S.W. 87 AVE
MIAMI, FLORIDA 33174
TEL. (305) 264-8100 FAX. (305) 262-6978
COMP-ANL\W07-25TMW

SERIES 747 HP ALUM SINGLE HUNG WDW. (L.M.I.)
TM WINDOW AND DOOR
601 N.W. 12TH AVE.
POMPANO BEACH, FL. 33069
TEL. (954) 781-4430 FAX. (954) 781-5078

no	date	by	description
A	01.08.08		NO CHANGE THIS SHEET

revisions:
date: 03-30-07
scale: 1/2" = 1"
dr. by: HAMID
chk. by:

drawing no.
W07-25
sheet 5 of 5